

MEDICAL / NURSING (MODELS & CHARTS CATALOGUE)

IMPORTED MANIKIN, STIMULATORS, MODELS & CHARTS OF

- PHARMACOLOGY MANIKIN
- SKELETON • TORSO • JOINTS
- DIGESTIVE • HEART • BRAIN
- RESCUE EMERGENCY MANIKIN
- EAR, NOSE & THROAT • CPR MANIKIN
- LIFE SUPPORT TRAINING • TRAUMA MANIKIN
- MEDICAL NURSING TRAINING
- PARAMEDICAL MODELS
- PHARMACY CHARTS & MODELS
- AED TRAINER
- SURGICAL NURSING TRAINING
- OBSTETRICS, GYNECOLOGY & MIDWIFERY TRAINING
- NEONATAL / PEDIATRIC NURSING TRAINING
- MEDICAL EXAMINATION TRAINING
- FIELD EMERGENCY TRAINING
- STOMATOLOGY / DENTAL TRAINING
- TRACHEOTOMY CARE SIMULATOR
- GASTRONOMY CARE SIMULATOR
- TUBE FEEDING TRAINING
- IV INJECTION TRAINING
- NEW BORN RESUSCITATION
- COMMUNITY HEALTH BAGS
- CHARTS & SIMULATORS ETC.



D.P. SCIENTIFIC SOLUTIONS

704, A-BLOCK, NEW TAGORE GARDEN
 AMBALA CANTT - 133001(H.R.) INDIA
 E-mail : dpscientificsolutions066@gmail.com
 visit us: www.dpscientificsolutions.in
 contact us: 85276-76998, 79882-53107



D.P. SCIENTIFIC SOLUTIONS

704, A-BLOCK, NEW TAGORE GARDEN
AMBALA CANTT - 133001(H.R.) INDIA
E-mail : dpscientificsolutions066@gmail.com
visit us: www.dpscientificsolutions.in
contact us: 85276-76998, 79882-53107

VISUAL MEDICAL CHARTS

Printed on water proof reinforced PVC Sheeting (REXINE)

1

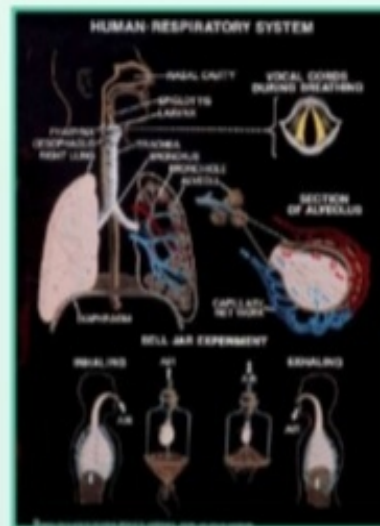
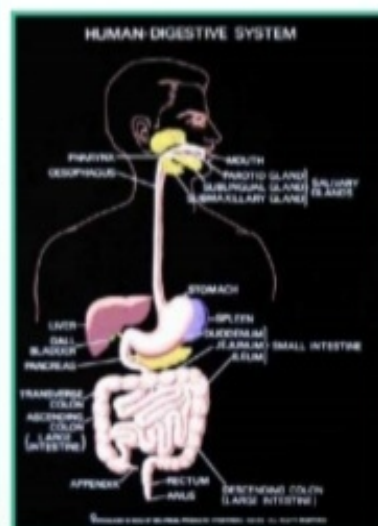
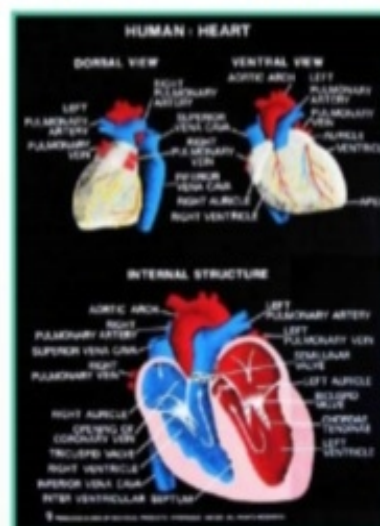
HUMAN ANATOMY CHARTS

Size 90x60cms FITTED WITH ROLLERS

each chart ₹ 650.00

Size 90x60cms WITH HARD BACKING & ALUMINIUM FRAME each chart ₹ 1850.00

- HA 1 Human: Skeleton
- HA 2 Human: Skeleton Joints and Limbs
- HA 3 Human: Heart
- HA 4 Human: Arterial System
- HA 5 Human: Venous System
- HA 6 Human: Digestive System
- HA 7 Human: Respiratory System
- HA 8 Human: Excretory System
- HA 9 Human: Brain
- HA 10 Human: Spinal Cord
- HA 11 Human: Skin
- HA 12 Human: Ear
- HA 13 Human: Eye
- HA 14 Human: Endocrine Glands
- HA 15 Human: Reproductive System
- HA 16 Human: Nervous System
- HA 17 Human: Muscular System
- HA 18 Human: Nose
- HA 19 Human: Tongue
- HA 20 Human: Muscles
- HA 21 Human: Cartilage & Bone
- HA 22 Human: Blood
- HA 23 Human: Blood Groups
- HA 24 Human: Embryo Development I
- HA 25 Human: Embryo Development II
- HA 26 Human: Lymphatic System
- HA 27 Human: Teeth
- HA 28 Human: Menstrual Cycle
- HA 29 Human: Immunity System
- HA 30 Human: Body
- HA 31 Human: Ovum
- HA 32 Human: Vascular System and Viscera
- HA 33 Human: Blood-I (R.B.C.)
- HA 34 Human: Blood-II (W.B.C.)
- HA 35 Human: Sperm
- HA 36 Human: Sense Organs
- HA 37 Human: Neuron
- HA 38 Human: Nephron
- HA 39 Human: Endocrine Glands: Function
- HA 40 Human: Liver & Pancreas
- HA 41 Human: Circulatory System
- HA 42 Human: Anatomy
- HA 43 Human: Reproductive System (Male)
- HA 44 Human: Stomach
- HA 45 Human: Reproductive System (Female)
- HA 46 Vestigial Organs in Human Being
- HA 47 Human: Ultra Structure of Human Cell
- HA 48 Human: Large Intestine
- HA 49 Human: Skull System
- HA 50 Human: Mammary Gland
- HA 51 Human: Karyogram
- HA 52 Human: Small Intestine
- HA 53 Human: Pituitary Gland
- HA 54 Human: Thyroid Gland
- HA 55 Human: Lymph Nods
- HA 56 Human: Adrenal Gland
- HA 57 Human: Pelvis Anatomy



EDUCATIONAL CHARTS PRINTED ON REXINE FLEXIBLE AND WRINKLE FREE FOR WALL HANGING

VISUAL MEDICAL CHARTS

Printed on water proof reinforced PVC Sheeting (REXINE)

2

HEALTH AWARENESS CHARTS

Size 100x125cms FITTED WITH ROLLERS

each chart ₹ 1050.00

Size 100x125cms WITH HARD BACKING & ALUMINIUM FRAME

each chart ₹ 2450.00

- Bi 92 Self Breast Examination
- Bi 93 Harmful Effects of Alcohol
- Bi 94 Harmful Effects of Tobacco Smoking
- Bi 95 Harmful Effects of Steroids
- Bi 96 Sexually Transmitted Infections
- Bi 97 Communicable Diseases
- Bi 98 Food Safty

PHARMACOLOGY CHARTS

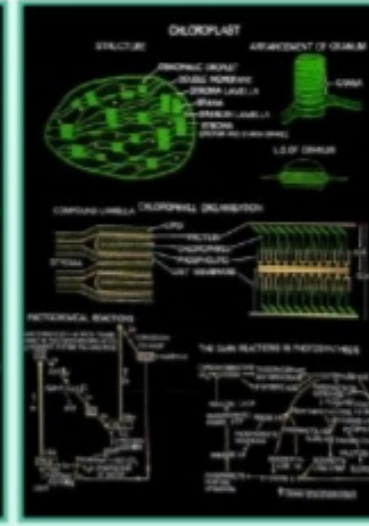
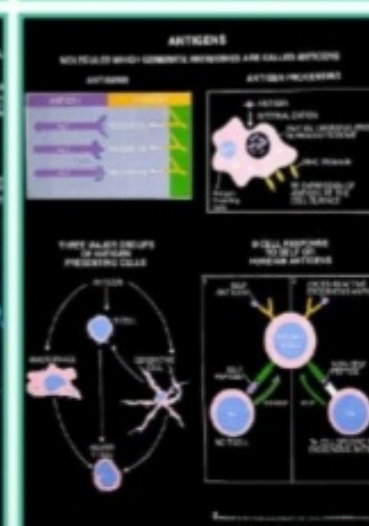
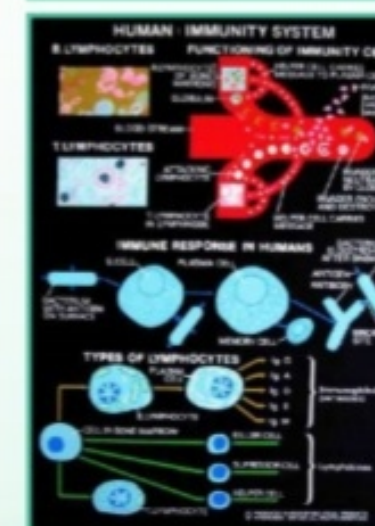
Size 100x125cms FITTED WITH ROLLERS

each chart ₹ 1050.00

Size 100x125cms WITH HARD BACKING & ALUMINIUM FRAME

each chart ₹ 2450.00

- Bi 137 Immunoglobulin Structure
- Bi 170 Drug Acting on Nervous System
- Bi 171 Immunopathology
- Bi 172 Pharmacokinetics-I
- Bi 173 Pharmacokinetics-II
- Bi 174 Cell Medicated Immune Reaction: Cytokines
- Bi 175 Vascular Path Way or Drug
- Bi 176 Development of Immune System
- Bi 177 Antiparasitic agents
- Bi 178 Lytic and Lysogenic Cycle
- Bi 179 Antifungal Agent
- Bi 180 Emetics Antiemetics & Gastrointestinal Drug
- Bi 181 Insulin Drugs
- Bi 182 Lymphoid organs and Diseases
- Bi 183 Auto Immune Diseases
- Bi 184 Pharmaceutical Evaporator-I
- Bi 185 Pharmaceutical Evaporator-II
- Bi 186 Compression Process or Table
- Bi 187 Drug Packaging System
- Bi 188 Centrifugation
- Bi 189 Extraction
- Bi 190 Drying
- Bi 191 Distillation (Molecular)
- Bi 192 Thyroid Hormones & Thyroid Inhibitors
- Bi 193 Local Anaesthetics
- Bi 194 Effect of Lithium
- Bi 195 Action of Benzodiazepines
- Bi 196 Angina Pectoris
- Bi 197 Filtration-I
- Bi 198 Filtration-II
- Bi 199 Antiviral Drugs
- Bi 200 Skeletal Music Relaxants
- Bi 201 Antiepileptic drugs
- Bi 202 Antiparkinsonian Drugs
- Bi 203 Antidepressant and antimitic Drug
- Bi 204 Antiarrhythmic Drug
- Bi 205 Anticancer Drugs
- Bi 206 Physiology of Urine Formation



THESE CHARTS ARE PUBLISHED BY BIO-VISUAL PRODUCTS AND WE ARE ITS PROPRIETOR



D.P. SCIENTIFIC SOLUTIONS

704, A-BLOCK, NEW TAGORE GARDEN
AMBALA CANTT - 133001(H.R.) INDIA
E-mail : dpscientificsolutions066@gmail.com
visit us: www.dpscientificsolutions.in
contact us: 85276-76998, 79882-53107

VISUAL MEDICAL CHARTS

Printed on water proof reinforced PVC Sheeting (REXINE)

3

BIOCHEMISTRY CHARTS

Size 100x125cms FITTED WITH ROLLERS

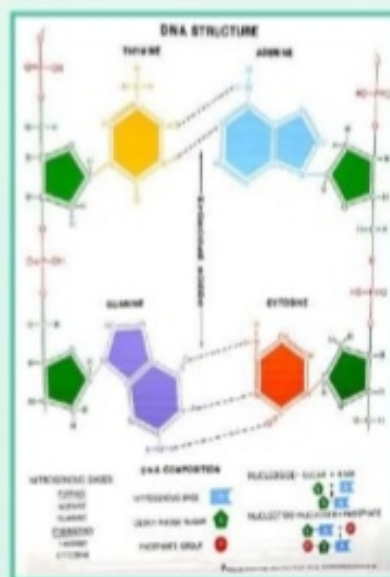
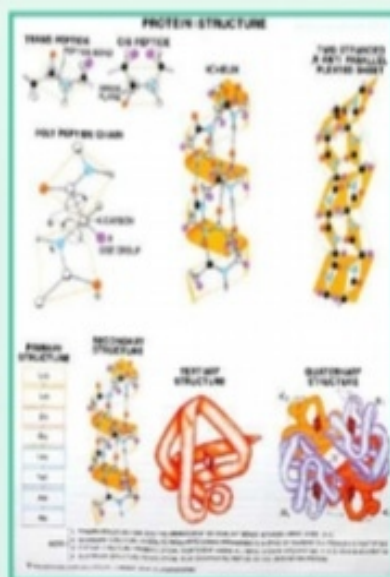
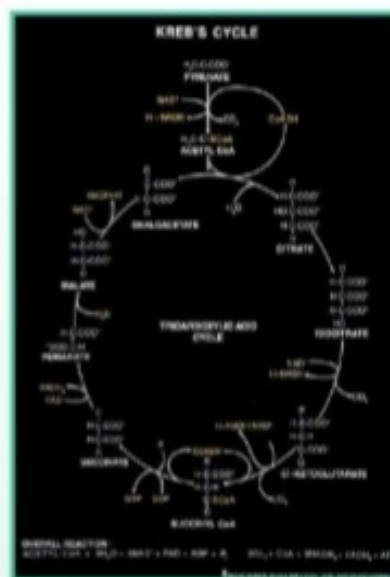
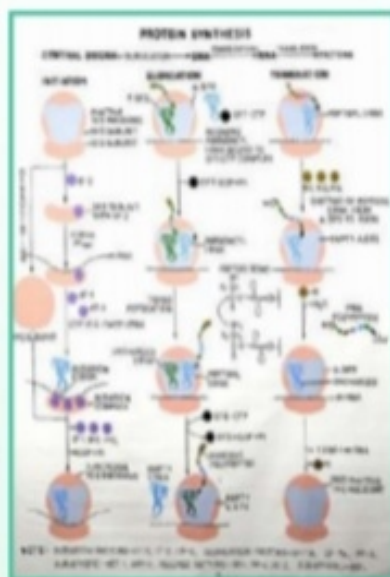
Size 100x125cms WITH HARD BACKING & ALUMINIUM FRAME

each chart ₹ 1050.00

each chart ₹ 2450.00

- BI 83 Protein Structure
- BI 121 Diabetes: Glucose Estimation
- BI 122 Heart Attack: Cholesterol Estimation
- BI 118 Balanced Diet
- BI 123 Jaundice: Bilirubin Estimation
- BI 157 Gene Transfer I-Conjugation
- BI 158 Gene Transfer II-Tansduction
- BI 159 Gene Transfer III- Transformation
- BI 176 C4 & CAM Cycles
- C 10 Alpha helical Structure of a polypeptide
- C 11 Tertiary & Quarternary Structure of Protein
- C 40 Amino Acids: Structure & Classification
- BI 09 Cell Membranes & Cell wall
- BI 10 Endoplasmic Reticulum
- BI 11 Mitochondrion
- BI 12 Golgi Complex
- BI 13 Chloroplast
- BI 14 Nucleus
- BI 15 Chromosomes
- BI 18 DNA 8 Loops (7'x3')
- BI 19 DNA Structure (Compounds)
- BI 26 RNA Types: Transcription & Translation
- BI 27 RNA Structure
- BI 28 Protein Synthesis
- BI 29 Urea Cycle
- BI 30 Vitamins: Sources & Deficiency
- BI 55 Osmosis, Plasmolysis & Diffusion
- BI 56 Gluconeogenesis & HMP Pathway
- BI 58 Enzymes: Classification & Kinetics
- BI 60 Genetic Code
- BI 66 Chromatography
- BI 67 Electrophoresis
- BI 80 Ribosomes & Lysosomes
- BI 81 Active & Passive Transport
- BI 82 Fatty Acid Oxidation & Regulation
- BI 84 Nucleotides & Biosynthesis
- BI 86 Prokaryotic & Eukaryotic Cells
- BI 111 Marasmus & Kwashiorkor
- BI 128 Lac Operon
- BI 129 Recombinant DNA & Cloning
- BI 130 Monoclonal Antibodies & Bottling
- BI 134 Tryptophan Operon
- BI 135 Arabionose Operon
- BI 136 Total Count of Blood
- BI 137 Polymerase Chain Reaction
- BI 138 Antigen-antibody Interaction-I
- BI 139 Antigen-antibody Interaction-II
- BI 140 Polymerase Chain Reaction
- BI 141 Plasma Membrane
- BI 142 Manufacture of alcohol from Molasses
- BI 145 Hypersensitivity Type -I
- BI 146 Blotting techniques for nucleic acid
- BI 149 Life Cycle: Human Immunodeficiency virus
- BI 152 Bacteria
- BI 153 Blotting Technique for Protein
- BI 154 Laboratory Safety
- BI 155 Forms of D.N.A.

- BI 156 Transposons
- BI 161 DNA Replication Types
- BI 163 DNA Viral Replication
- BI 164 Major Histocompatibility Class I Molecule
- BI 165 Major Histocompatibility Class II Molecule
- BI 167 Electron Microscope
- BI 168 Complement System
- BI 169 Kerb's Cycle
- BI 153 Viruses
- BI 196 Plant Tissue Culture
- BI 194 Plant Respiration
- BI 199 Plant Hormones
- BI 231 Mucor
- BI 232 Mucor : Life Cycle
- C 009 DNA Structure & Replication



ALL THESE CHARTS ARE PREPARED UNDER EXPERT MEDICAL SUPERVISION

VISUAL MEDICAL CHARTS

Printed on water proof reinforced PVC Sheeting (REXINE)

4

DISEASES CHARTS

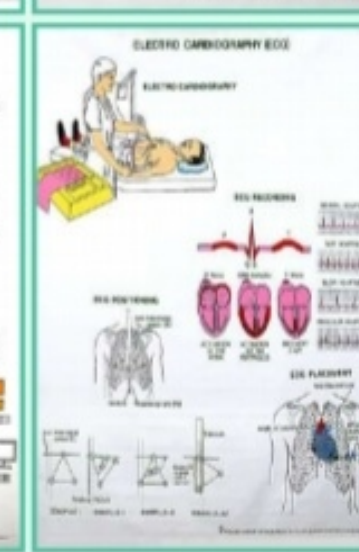
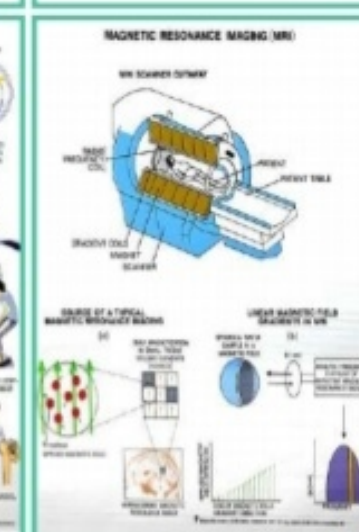
Size 100x125cms FITTED WITH ROLLERS

Size 100x125cms WITH HARD BACKING & ALUMINIUM FRAME

each chart ₹ 1050.00

each chart ₹ 2450.00

- BI 301 Cardiopulmonary Resuscitation (CPR-1) Adult
- BI 305 Cardiopulmonary Resuscitation (CPR-2) Infant
- BI 306 Cardiopulmonary Resuscitation (CPR-3) Children
- BI 150 First Aid -1
- BI 151 First Aid -2
- BI 152 First Aid -3
- BI 150 First Aid -1
- BI 118 Balanced Diet
- BI 30 Vitamins
- BI 42 Nutrients
- BI 43 Food Pyramid
- BI 32 Tuberculosis
- BI 33 Typhoid
- BI 34 Diphtheria
- BI 35 Diarrhoea
- BI 36 Filariasis
- BI 37 Leprosy
- BI 38 Pathogenic Protozoa
- BI 39 E.Coli
- BI 54 AIDS
- BI 308 Measles
- BI 309 Cholera
- BI 19 DNA Structure (Compounds)
- BI 28 Protein Synthesis
- BI 109 Pellagra and Goitre
- BI 110 Arboflavinosis and Scurvy
- BI 111 Marasmus and Kwashiorkor
- BI 116 DNA Finger Printing -1
- BI 117 DNA Finger Printing -2
- BI 121 Diabetes : Glucose Estimation
- BI 122 Heart Attack : Cholesterol Estimation
- BI 123 Jaundice : Bilirubin Estimations
- BI 136 Total Count of Blood
- BI 137 Immunoglobulin Structure
- BI 138 Antigen-antibody Interaction-1
- BI 139 Antigen-antibody Interaction-2
- BI 153 Bottling Techniques For Proteins
- BI 166 Hereditary Alterations
- BI 230 Pedigree Analysis : Windows Peak
- BI 231 Pedigree Analysis : Rolling Tongue
- BI 77 Antigens
- BI 78 Immunological Disorders
- BI 79 Role of Hormones in Human Being
- BI 307 Cardiac Cycle



BIOMEDICAL TECHNOLOGY

Size 100x125cms FITTED WITH ROLLERS

Size 100x125cms WITH HARD BACKING & ALUMINIUM FRAME

each chart ₹ 1050.00

each chart ₹ 2450.00

- BI 88 X-Ray Radiography
- BI 89 Magnetic Resonance Imaging (MRI)
- BI 90 Electro Cardio Graphy (ECG)
- BI 91 Electro Encephalography (EEG)

MEDICAL CHARTS PRINTED ON REXINE*FLEXIBLE AND WRINKLE FREE FOR WALL HANGING



D.P. SCIENTIFIC SOLUTIONS

704, A-BLOCK, NEW TAGORE GARDEN
AMBALA CANTT - 133001(H.R.) INDIA
E-mail : dpscientificsolutions066@gmail.com
visit us: www.dpscientificsolutions.in
contact us: 85276-76998, 79882-53107

VISUAL MEDICAL CHARTS

Printed on water proof reinforced PVC Sheeting (REXINE)

5

MICROBIOLOGY CHARTS

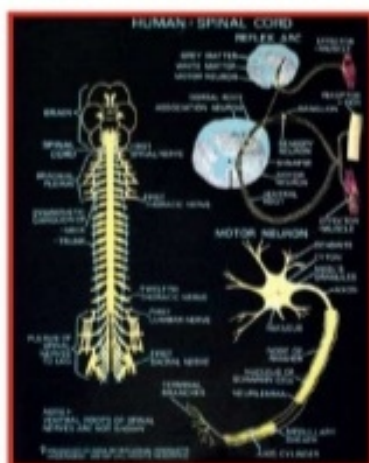
Size 100x125cms FITTED WITH ROLLERS

Size 100x125cms WITH HARD BACKING & ALUMINIUM FRAME

each chart ₹ 1050.00

each chart ₹ 2450.00

- Bi 32 Tuberculosis
- Bi 33 Typhoid
- Bi 34 Diphtheria
- Bi 35 Diarrhoea
- Bi 36 Filariasis
- Bi 37 Leprosy
- Bi 38 Pathogenic Protozoa
- Bi 39 E. Coli
- Bi 49 Saprolegnia
- Bi 50 Rhizopus
- Bi 51 Albigo
- Bi 52 Phytophthora
- Bi 53 Saccharomyces
- Bi 55 Penicillium
- Bi 54 Aids
- Bi 58 Puccinia
- Bi 79 Myxophyceae
- Bi 80 Chlamydomonas
- Bi 86 Prokaryotic & Eukaryotic Cells



- Bi 156 Transposons
- Bi 157 Gene Transfer I-Conjugation
- Bi 158 Gene Transfer II-Tansduction
- Bi 159 Gene Transfer III- Transformation
- Bi 162 DNA Replication Types
- Bi 163 DNA Viral Replication
- Bi 167 Electron Microscope
- Bi 168 Complement System
- Bi 169 Kerb's Cycle
- Bi 164 Major Histocompatibility Class I Molecule
- Bi 165 Major Histocompatibility Class II Molecule
- Bi 151 Colletotrichum
- Bi 152 Bacteria
- Bi 153 Viruses
- Bi 189 Helminthosporium
- Bi 213 Plant Diseases
- Bi 226 Citrus Canker & Rice Blast
- Bi 73 Types of Immunity
- Bi 77 Antigens

- Bi 106 Xerophthalmia and Rickets
- Bi 109 Pellagra and Goitre
- Bi 110 Ariboflavinosis and Scurvy
- Bi 111 Marasmus and Kwashiorkor
- Bi 150 Cercospora
- Bi 153 Blotting Technique for Proteins
- Bi 154 Laboratory Safety
- Bi 155 Osmosis, Plasmolysis & Diffusion
- Bi 56 Gluconeogenesis & HMP Pathway
- Bi 58 Enzymes: Classification & Kinetics
- Bi 60 Genetic Code
- Bi 66 Chromatography
- Bi 67 Electrophoresis
- Bi 80 Ribosomes & Lysosomes
- Bi 81 Active & Passive Transport
- Bi 82 Fatty Acid Oxidation & Regulation
- Bi 84 Nucleotides & Biosynthesis
- Bi 86 Prokaryotic & Eukaryotic Cells
- Bi 111 Marasmus & Kwashiorkor
- Bi 128 Lac Operon
- Bi 129 Recombinant DNA & Cloning
- Bi 130 Monoclonal Antibodies & Bottling
- Bi 134 Tryptophan Operon
- Bi 135 Arabionose Operon
- Bi 136 Total Count of Blood
- Bi 137 Polymerase Chain Reaction
- Bi 138 Antigen-antibody Interaction-I
- Bi 139 Antigen-antibody Interaction-II
- Bi 140 Polymerase Chain Reaction
- Bi 141 Plasma Membrane
- Bi 142 Manufacture of alcohol from Molasses
- Bi 145 Hypersensitivity Type -I
- Bi 146 Blotting techniques for nucleic acid
- Bi 149 Life Cycle: Human Immunodeficiency virus
- Bi 152 Bacteria
- Bi 153 Blotting Technique for Protein
- Bi 154 Laboratory Safety
- Bi 155 Forms of D.N.A.



THESE CHARTS MEET THE HIGHEST STANDARDS OF MEDICAL SCIENCES

MATERNAL AND CHILD HEALTH NURSING LAB. CHARTS

6

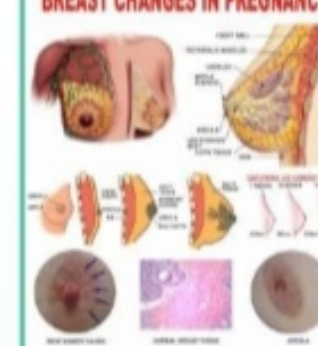
SIZE 60x45 cm. approx

CHART CODE NO.

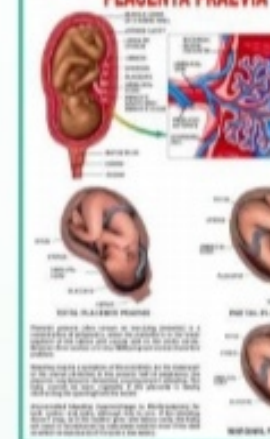
NAME OF THE CHART

- ANM01 Breast Changes in Pregnancy
- ANM02 Uterine Changes in Pregnancy
- ANM03 First Stage of Labour
- ANM04 Second Stage labour
- ANM05 Third Stage labour
- ANM06 Complete Breech Presentation
- ANM07 Incomplete Breech Presentation
- ANM08 Foot Presentation
- ANM09 Shoulder Presentation
- ANM10 Face Presentation
- ANM11 Brow Presentation
- ANM12 Twin Pregnancy
- ANM13 Placenta Praevia
- ANM14 Caput Succedaneum, Cephalhaematoma
- ANM15 Congenital Malformation of New Born
- ANM16 Cleft lip-Palate
- ANM17 Spina Bifida
- ANM18 Hydrocephalus
- ANM19 Anencephalus
- ANM20 Breast Self Examination

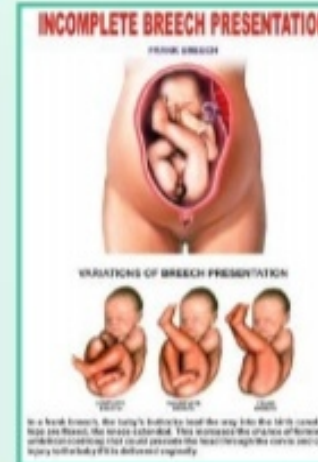
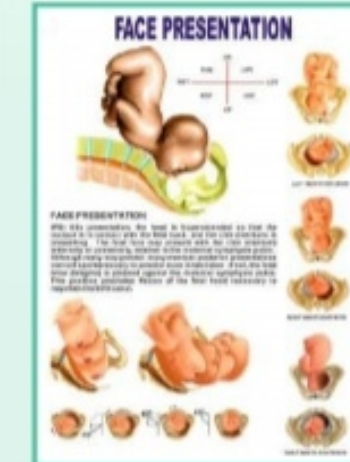
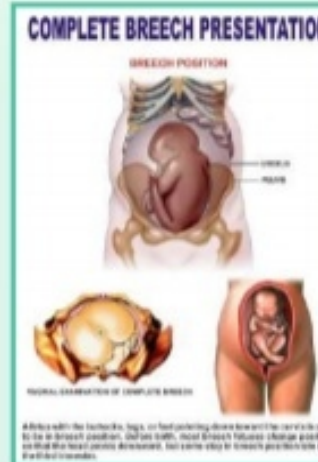
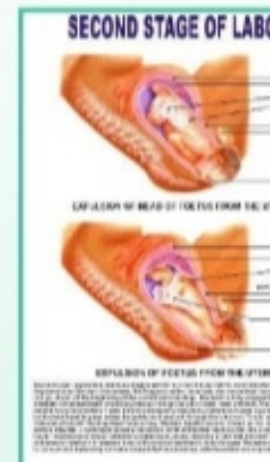
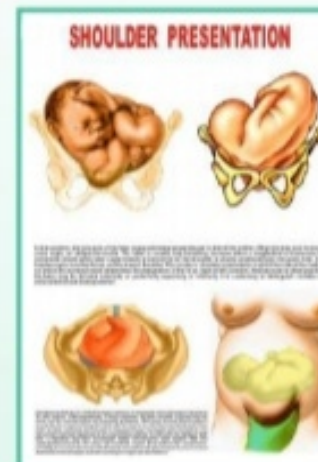
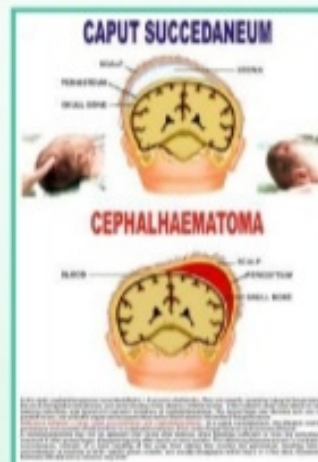
BREAST CHANGES IN PREGNANCY



PLACENTA PRAEVIA



Matt Canvas Laminated with Frame on Board ₹ 990.00 each



IMPORTANT M.C.H. LABORATORY EDUCATIONAL CHARTS



D.P. SCIENTIFIC SOLUTIONS

704, A-BLOCK, NEW TAGORE GARDEN
AMBALA CANTT - 133001 (H.R.) INDIA
E-mail : dpscientificsolutions066@gmail.com
visit us: www.dpscientificsolutions.in
contact us: 85276-76998, 79882-53107



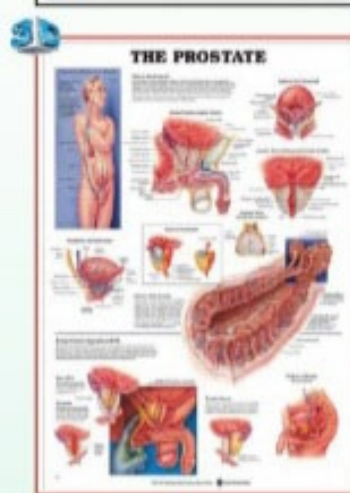
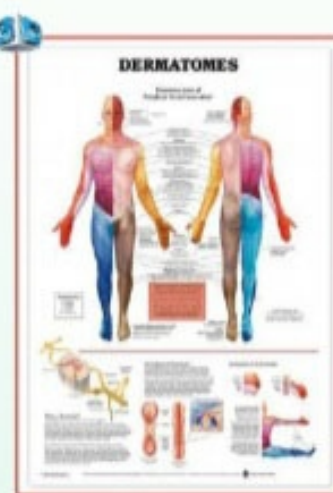
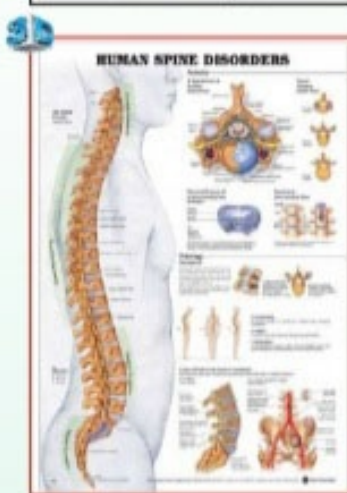
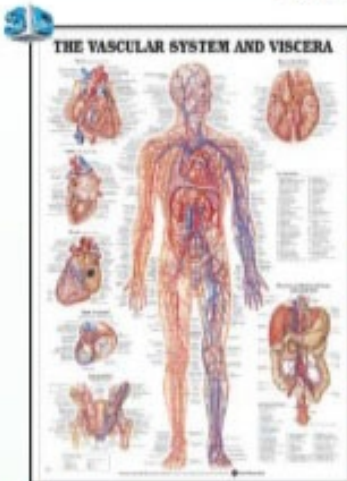
3D EMBOSSED THE WORLD'S BEST ANATOMICAL CHARTS (MADE IN U.S.A.)

7

Published by Anatomical Chart Co. (U.S.A.) / WOLTERS KLUWER
complete with hard backing, aluminium frame & hanging hooks
Size 51x66cm

₹ 2500/-

- D3-01 THE VASCULAR SYSTEM AND VISCERA
- D3-02 UNDERSTANDING OSTEOPOROSIS
- D3-03 UNDERSTANDING THE COMMON COLD
- D3-04 UNDERSTANDING EPILEPSY
- D3-05 DERMATOMES
- D3-06 THE PROSTATE
- D3-07 HUMAN SPINE DISORDERS
- D3-08 KNEE INJURIES
- D3-09 HIP AND KNEE
- D3-10 HAND AND WRIST
- D3-11 FOOT AND ANKLE
- D3-12 U/S CARPAL TUNNEL SYNDROME



FOR PRICES OF ALL MODELS
FROM PAGES NO. 11 TO 64
OF THE CATALOGUE, PLEASE SEE THE PRICE LIST ENCLOSED
IF NOT, PLEASE ASK FOR THE SAME ON
E-MAIL ID : dpscientificsolutions066@gmail.com

THE WORLD'S BEST ANATOMICAL CHARTS (MADE IN U.S.A.)

8

Published by Anatomical Chart Co. (U.S.A.)

These Charts are published by World's Best Anatomical Chart Co., U.S.A. which are perfect for everybody in the Medical/Nursing profession. These Charts show the maximum Anatomical details which are visible at a glance, all the Anatomical features are clearly labeled to avoid any confusion, striking colorful images for capturing immediate attention. All the key organs and structures are shown in enlarged view with the best possible Anatomical details. These are in size 51x66cm approx.

With special rigid lamination on board with aluminium frame & hanging hooks
With special rigid lamination with plastic rollers

₹ 1600/-
₹ 1200/-

SKELETON SYSTEM CHARTS

- DA001 The Skeletal System
- DA002 The Vertebral Column
- DA003 Human Spine Disorders
- DA004 The Human Skull
- DA005 Hand And Wrist
- DA006 Understanding Carpal Tunnel Syndrome
- DA007 Shoulder And Elbow
- DA008 Head And Neck
- DA009 Hip And Knee
- DA010 Whiplash Injuries Of The Head & Neck
- DA011 The Muscular System
- DA012 Low Back Pain
- DA013 Ligaments Of The Joints
- DA014 Understanding Arthritis
- DA015 Anatomy & Injuries Of The Hand & Wrist
- DA016 Anatomy & Injuries Of The Shoulder
- DA017 Anatomy & Injuries Of The Hip
- DA018 Anatomy & Injuries Of The Spine
- DA019 U/S Joint Lower Extremities
- DA020 U/S Upper Extremities
- DA021 U/S Athletic Injuries of Knee
- DA022 Anatomy & Injuries of the Foot & Ankle
- DA023 Foot & Ankle
- DA024 Hip and Knee Inflammations
- DA025 Knee Injuries
- DA026 Temporomandibular Joint (TMJ)
- DA027 Understanding Pain
- DA028 Human Spine Disorders
- DA029 Understanding Arthritis

TEETH & JAW

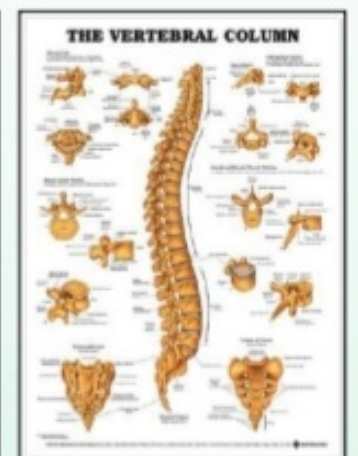
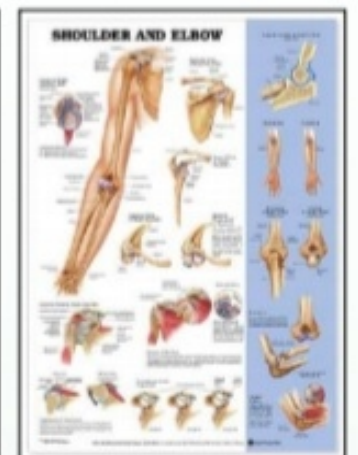
- DA030 Disorder of Teeth and Jaw
- DA031 Anatomy of teeth

WEIGHT AND DIET

- DA032 Keys to Healthy Eating
- DA033 Maintaining a Healthy
- DA034 Weight Metabolic Syndrome
- DA035 Risks of Obesity
- DA036 BMI & Waist Circumference

HEART AND CIRCULATORY SYSTEM

- DA037 Anatomy of the Heart
- DA038 Cardiovascular Disease
- DA039 Deep Vein Thrombosis



EACH AND EVERY CHART HAS BEEN SPECIALLY SELECTED TO COVER ALL FIELDS OF MEDICAL EDUCATION

THE ACTUAL PHOTOGRAPH MAY DIFFER FROM THE PICTURE SHOWN DUE TO CONSTANT IMPROVEMENT



D.P. SCIENTIFIC SOLUTIONS

704, A-BLOCK, NEW TAGORE GARDEN
AMBALA CANTT - 133001(H.R.) INDIA
E-mail : dpscificsolutions066@gmail.com
visit us: www.dpscificsolutions.in
contact us: 85276-76998, 79882-53107

THE WORLD'S BEST ANATOMICAL CHARTS (MADE IN U.S.A.)

9

Published by Anatomical Chart Co. (U.S.A.)

These Charts are published by World's Best Anatomical Chart Co., U.S.A. which are perfect for everybody in the Medical /Nursing profession. These Charts shows the maximum Anatomical details which are visible at a glance, all the Anatomical features are clearly labeled to avoid any confusion, striking colorful images for capturing immediate attention. All the key organs and structures are shown in enlarged view with the best possible Anatomical details. These are in size 51x66cm approx.

With special rigid lamination on board with aluminium frame & hanging hooks

With special rigid lamination with plastic rollers

₹ 1600/-

₹ 1200/-

- DA040 Heart Conditions
- DA041 Heart Disease
- DA042 Hypertension
- DA043 The Heart
- DA044 The Vascular System and Viscera
- DA045 Understanding Cholesterol
- DA046 Understanding Hypertension

NERVOUS SYSTEM

- DA047 Anatomy of the Brain
- DA048 Autonomic Nervous System
- DA049 Dermatomes
- DA050 Migraines and Headaches
- DA051 The Brain
- DA052 The Nervous System
- DA053 The Spinal Nerves
- DA054 Understanding Alzheimer's
- DA055 Understanding Depressions
- DA056 Understanding Epilepsy
- DA057 Understanding Multiple Sclerosis
- DA058 Understanding Parkinson's Disease
- DA059 The Lymphatic System
- DA060 Understanding Stroke
- DA061 Understanding Schizophrenia

DIABETES

- DA062 Understanding Diabetes
- DA063 Understanding Diabetes Type 1
- DA064 Understanding Diabetes Type 2
- DA065 The Kidney

GYNECOLOGY & REPRODUCTIVE SYSTEM

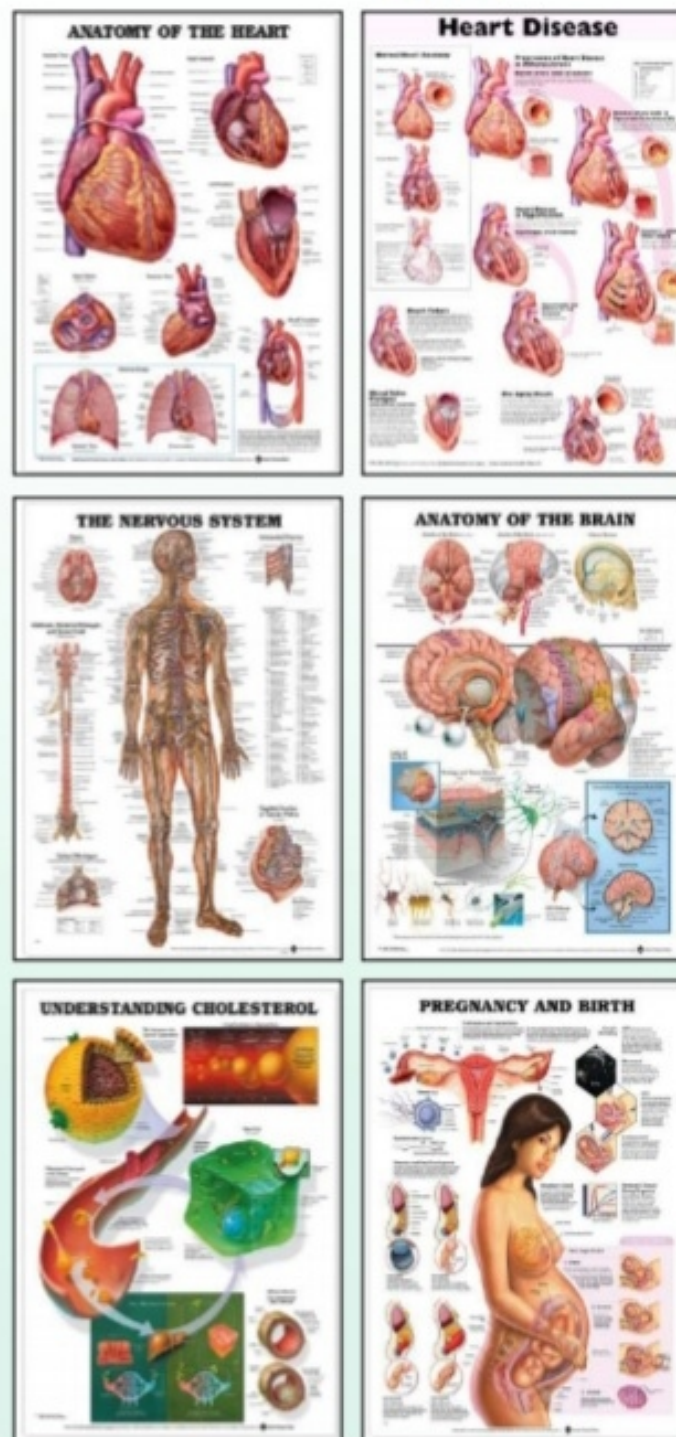
- DA066 The Prostate
- DA067 Understanding Erectile Dysfunction
- DA068 The Female Muscular System
- DA069 Pregnancy in Birth

HIV AND AIDS

- DA070 Understanding HIV and AIDS
- DA071 Sexually Transmitted Infections

THE ENDOCRINE SYSTEM

- DA072 The Endocrine System
- DA073 The Thyroid Disorder
- DA074 Internal Organs of the Human Body



EACH AND EVERY KEY ORGAN IS FULLY LABELED

THE WORLD'S BEST ANATOMICAL CHARTS (MADE IN U.S.A.)

10

Published by Anatomical Chart Co. (U.S.A.)

These Charts are published by World's Best Anatomical Chart Co., U.S.A. which are perfect for everybody in the Medical /Nursing profession. These Charts shows the maximum Anatomical details which are visible at a glance, all the Anatomical features are clearly labeled to avoid any confusion, striking colorful images for capturing immediate attention. All the key organs and structures are shown in enlarged view with the best possible Anatomical details. These are in size 51x66cm approx.

With special rigid lamination on board with aluminium frame & hanging hooks

With special rigid lamination with plastic rollers

₹ 1500/-

₹ 1075/-

THE RESPIRATORY SYSTEM

- DA075 The Respiratory System
- DA076 The Respiratory System and Asthma
- DA077 Understanding Asthma
- DA078 Understanding Allergies
- DA079 Understanding Bacterial Infections
- DA080 Understanding Influenza
- DA081 Understanding the Common Cold
- DA082 Understanding Viral Infections
- DA083 Chronic Obstructive pulmonary Diseases

IMMUNE SYSTEM

- DA084 Understanding Osteoporosis
- DA085 Understanding Skin Cancer
- DA086 Understanding Ulcer
- DA087 Understanding Menopauses
- DA088 Understanding Cancer
- DA089 Dangers of Alcohol
- DA090 Dangers of Smoking
- DA091 Understanding Hepatitis
- DA092 Understanding Breast Disease
- DA093 Understanding Viral Infection
- DA094 Understanding Glaucoma

EYE, EAR, NOSE & THROAT

- DA095 The Eye
- DA096 Disorder of the Eye
- DA097 The Human Hair
- DA098 Ear, Nose & Throat
- DA099 Middle Ear Condition
- DA100 Anatomy of the Inner Ear
- DA101 The Eye Anterior & Proterior Chamber

SYSTEMS OF HUMAN BODY

- DA102 The Skeletal System
- DA103 The Muscular System
- DA104 Vascular System and Viscera
- DA105 Autonomic Nervous System
- DA106 The Nervous System
- DA107 The Female Muscular System
- DA108 The Lymphatic System
- DA109 The Endocrine System
- DA110 The Respiratory System



THESE CHARTS ARE PRINTED UNDER EXPERT MEDICAL CARE

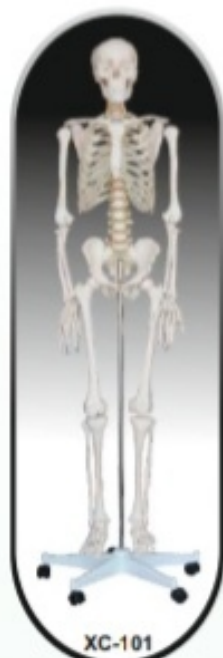


D.P. SCIENTIFIC SOLUTIONS

704, A-BLOCK, NEW TAGORE GARDEN
AMBALA CANTT - 133001 (H.R.) INDIA
E-mail : dpscientificsolutions066@gmail.com
visit us: www.dpscientificsolutions.in
contact us: 85276-76998, 79882-53107

IMPORTED SKELETON MODELS

11



XC-101
HUMAN SKELETON MALE LIFE SIZE (TALL 180 cms)

GD/A11101
HUMAN SKELETON FEMALE LIFE SIZE (TALL 162 cms)

Life size articulated adult plastic skeleton is ideal for teaching the basics of human anatomy. The arms and legs are removable for study. Features nerve branches. Vertebral artery and herniated lumbar disc. Skull includes removable lower teeth. Mounted on a calvarium, suture lines and 3 removable lower teeth. Mounted on a sturdy 16" wide base. Made of washable and unbreakable PVC plastic.

XC - 102
HUMAN SKELETON MEDIUM (TALL 85 cms)

Skeleton with full natural movement and a user-friendly personality that will encourage children to learn the names of the bones, with details to satisfy students, doctors or anyone interested in the human skeleton. Removable calvarium. Mounted on an iron metal stand. Made of washable and unbreakable PVC plastic.

XC - 102B
HUMAN SKELETON WITH NERVES & BLOOD VESSELS (TALL 85 cms)

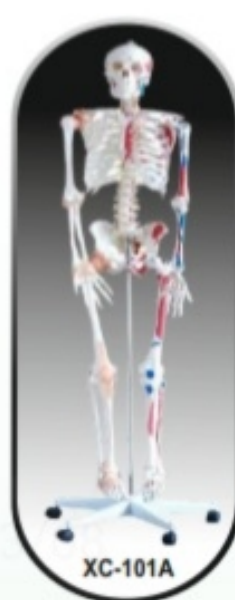
This model depicts the position, course and distribution of main arteries and peripheral nerves of the human body. It may be employed as a visual aid in the instruction of anatomy to students of medicine. Mounted on an iron metal stand. Made of washable and unbreakable PVC plastic.

XC-130-C **New**
DISARTICULATED HUMAN SKELETON (UNILATERAL)
(100 Bone Set) Same as XC-130 but with single side set of bones with full skull.



XC-101A
HUMAN SKELETON MALE WITH MUSCLES & LIGAMENTS LIFE - SIZE (TALL 180 cms)

Life size articulated adult plastic skeleton is ideal for teaching the basics of human anatomy. The arms and legs are removable for study. Features nerve branches. Vertebral artery and herniated lumbar disc. Skull includes removable lower teeth. Mounted on a calvarium, suture lines and 3 removable lower teeth. Mounted on a sturdy 16" wide base. Made of washable and unbreakable PVC plastic.



XC - 130
DISARTICULATED HUMAN SKELETON (BILATERAL) (200 Bones) Bone set

Life size disarticulated skeleton will encourage students to learn various bones of an Adult Human. It is a visual aid for instruction of anatomy for students, doctors, nurses or anyone interested in human skeleton.

XC-130-B
DISARTICULATED HUMAN SKELETON (200 BONES) Bone set (BILATERAL)

This Model is exactly same as XC-130 above but the bones are coloured by hand to show the muscles.



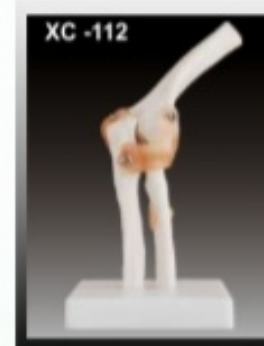
12

IMPORTED SKELETON MODELS



XC - 109
SHOULDER JOINT LIFE SIZE WITH MUSCLES

An instructional model to illustrate abduction, anteversion, retroversion and internal/external rotation. Includes flexible, artificial ligaments. Made of PVC plastic. On Stand.



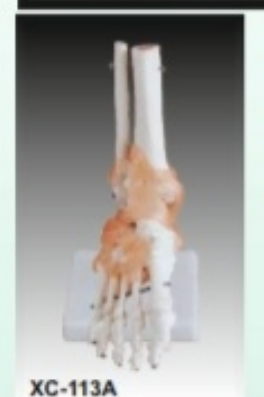
XC - 112
ELBOW JOINT LIFE SIZE WITH MUSCLES

Demonstrates flexion, extension and internal/external rotation of the radius. Include flexible, artificial ligaments. Made of PVC plastic. On Stand.



XC - 111
KNEE JOINT LIFE SIZE WITH MUSCLES

Demonstrates flexion, extension and internal/external rotation. Include flexible, artificial ligaments. Made of PVC plastic. On Stand.



XC-113A
FOOT JOINT WITH LIGAMENTS LIFE SIZE

Demonstrate all of foot functionality and the external anatomical structures. Including flexible, artificial ligaments. Made of PVC plastic.

XC-114A
HAND JOINT WITH LIGAMENTS LIFE SIZE

Demonstrate all of hand functionality and the external anatomical structures. Including flexible, artificial ligaments. Made of PVC plastic.



XD-127
FUNCTIONAL ELBOW JOINT LIFE SIZE

Life size. Shows the shapes and correct origins and insertions of biceps & triceps. Biceps and triceps are made of flexible material, extension and flexion can be shown as well as the antagonist relationship of these two muscles. On base.

XC - 114
HAND JOINT LIFE SIZE

Demonstrates all of hand functionality and the external anatomical structures. Made of PVC plastic. On Stand.

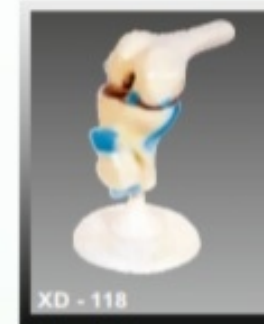
XC - 110
HIP JOINT LIFE SIZE WITH MUSCLES

Demonstrates anteversion, retroversion, abduction and internal/external rotation. Include flexible, artificial ligaments. Made of PVC plastic. On Stand.



XD - 118
KNEE FUNCTIONAL JOINT LIFE SIZE WITH MUSCLES

An instructional model to illustrate the ligament connections. Fully flexible joint to demonstrate abduction, anteversion, retroversion and internal/external rotation.. Made of PVC plastic. On Stand.



XC - 113
FOOT JOINT LIFE SIZE

Demonstrates all of foot functionality and the external anatomical structures. Made of PVC plastic. On stand.



FOR PRICES OF ALL THE MODELS, PLEASE SEE ENCLOSURE OR ASK FOR THE PRICE LIST

FOR PRICES OF ALL THE MODELS, PLEASE SEE ENCLOSURE OR ASK FOR THE PRICE LIST



D.P. SCIENTIFIC SOLUTIONS

704, A-BLOCK, NEW TAGORE GARDEN
AMBALA CANTT - 133001 (H.R.) INDIA
E-mail : dpscificsolutions066@gmail.com
visit us: www.dpscificsolutions.in
contact us: 85276-76998, 79882-53107

IMPORTED SKELETON MODELS

13



XC - 125
FEMALE PELVIC MUSCLES & ORGANS
This model is designed as an aid to the teaching of anatomy of female pelvis in institutes. It facilitates the students to get an integral knowledge of various important structures, such as pelvic muscles and pelvic organs as a whole. This model is made of PVC plastic. Natural size.



XC - 123 ADULT MALE PELVIS

XC - 124 ADULT FEMALE PELVIS
These Models size are just the same as in realities and made of PVC plastic. Comparing a model of male pelvis with a female one, the differences between the two can be listed as follows:-

| | Male | Female |
|---------------------------|--------------------|-----------------|
| Pelvis shapes | : Longs and narrow | Short and broad |
| Pelvis cava | : Like a funnel | Like a barrel |
| Aperture pelvis superiors | : Heart-like | Rounded |
| Sacrum | : Long and narrow | Broad and short |
| Angles of pelvis arch | : 70-75 degree | 90-100 degree |
| Symphysis pubica | : Long and narrow | Short and broad |



XC-124



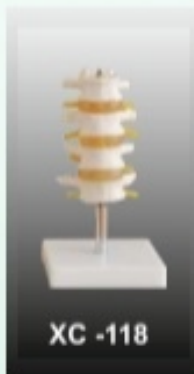
XC-127

BIRTH DEMONSTRATION MODEL

This model consists of 2 innominate bones, sacrum, coccyx, with fetal skull which is firmly connected with the model by means of a flexible metal tube which can be fixed in every position. It facilitates the students to get an integral knowledge of normal labor of a pregnant women.



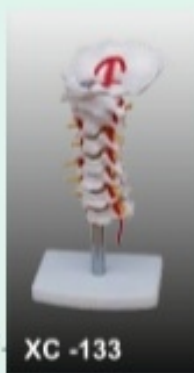
XC-117
LUMBAR SET (3 PCS)
Life size lumbar vertebrae are shown with normal intervertebral disc and spinal cord with nerve roots. Mounted on a sturdy metal rod.



XC - 118

XC - 118
LUMBAR SET (4PCS)

Life-size lumbar vertebrae are shown with normal intervertebral disc and spinal cord with nerve roots. Mounted on a sturdy metal rod.

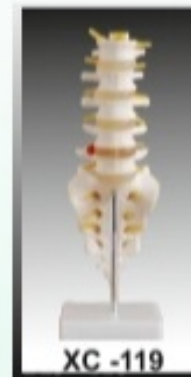


XC - 133

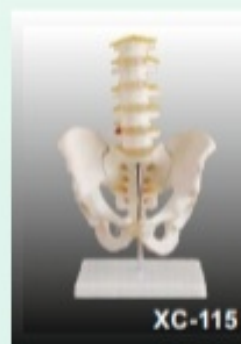
XC - 133
CERVICAL VERTEBRAL COLUMN WITH NECK ARTERY

This model shows Cervical Vertebral Column with neck artery and nerve roots.

XC - 119
LUMBAR VERTEBRAE WITH SACRUM & COCCYX AND HEARINATED DISC LIFE SIZE



XC - 119



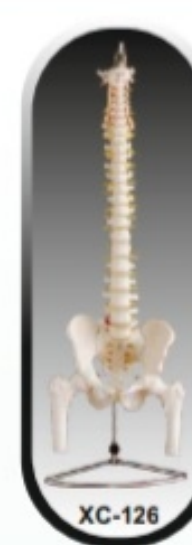
XC-115

XC - 115
PELVIS WITH 5PCS LUMBAR VERTEBRAE
Life -size Lumbar Vertebrae are shown with normal intervertebral disc, spinal chord and pelvis.

ALL THE ANATOMICAL MODELS ARE MADE OF HIGH QUALITY WASHABLE & UNBREAKABLE PVC PLASTIC MATERIAL

14

IMPORTED SKELETON MODELS



XC-126

XC - 126
VERTEBRAL COLUMN WITH PELVIS AND FEMUR HEADS (TALL 85 CM)

This highly detailed life-size model shows all significant features of each vertebra, including spinal cord, nerve roots, the vertebral artery, a herniated disc and vertebral notch etc. Ideal teaching model for students, patient education of chiropractors, orthopedic surgeons and other medical professionals. Special features include: inflexible 29" tall vertebral column complete with pelvis, sacrum, occipital bone, vertebral artery, all nerve branches and herniated lumbar disc. Deluxe chrome stands.



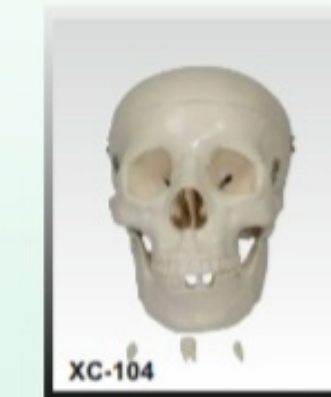
GD/A11115

XC-104C
ADULT SKULL (COLOURED) LIFE SIZE
Life-size skull, bones painted in different colors for precise study. Disassembled into 3 part.

GD/A11115
INFANT SKULL MODEL
Material: Advanced PVC
A Complete Set



XC-104C



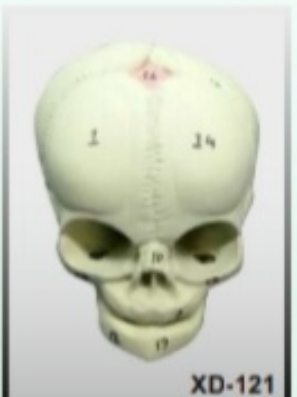
XC-104

XC - 104
ADULT SKULL LIFE SIZE

A life-size adult PVC plastic skull features a movable jaw, cut calvarium, surface lines and 3 removable lower teeth-incisor, cuspid and molar. Dissectible into 3 parts. Size 19x15x21 cm

XD-121
FOETAL CHILD SKULL (INFANT SKULL)

This Fetal Skull is detailed to show the major structure of the different bones of the skull. The mandible is spring hanged to view the bone structures of the mouth. This model is lifelike and made PVC plastic. size: 10x8x10cm



XD-121

XC-104E **SKULL MODEL WITH 8 PARTS BRAIN**
New This model includes 8 parts brain: frontal and parietal lobe, temporal and occipital lobe, encephalic trunk and cerebellum.



XC-104E

XD-104-1
DISARTICULATED SKULL

This highly detailed Human Skull model is Disarticulated into many sections. The calvarium is sectioned horizontally with the lower jaw hinged. The basal portion of the skull has been sectioned sagittally, displaying all 3 sinuses.



FOR CERTIFICATE OF AUTHORIZED DISTRIBUTORSHIP PLEASE ASK FOR MANUFACTURER'S CERTIFICATE



D.P. SCIENTIFIC SOLUTIONS

704, A-BLOCK, NEW TAGORE GARDEN
AMBALA CANTT - 133001 (H.R.) INDIA
E-mail : dpscificsolutions066@gmail.com
visit us: www.dpscificsolutions.in
contact us: 85276-76998, 79882-53107

IMPORTED ANATOMICAL MODELS

15



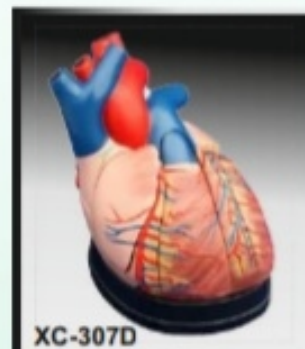
XC-307
JUMBO HEART MODEL

This model helps the students to understand the external features and internal structures of the heart, and its relation with the large blood vessels. Thus a clearer conception of the routes of the systemic and pulmonary circulation can be obtained. Dissectible into 3 parts, 4 times enlarged. Made of PVC plastic. Mounted on base. Size : 25x23x23cm.

XC-307A / PD-002
HEART MODEL

LIFE SIZE

This life-size heart model excellent for patient education or elementary science classes. Anatomically accurate and great for learning basic external and internal anatomy of the heart. Dissectible into 2 parts. Made of PVC and mounted on stand. Size: 15x8x9cm



XC-307D

XC-307D MIDDLE HEART MODEL

This model shows external features and internal structures of heart and its relation between large blood vessels. Dissectible into 5 parts, 3 times enlarged.

XC-308

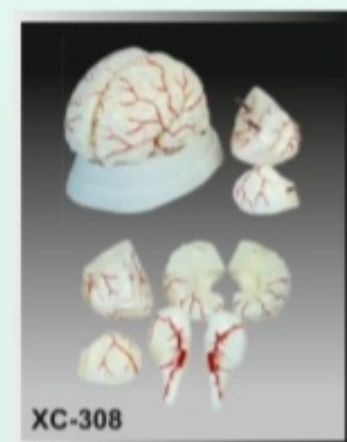
BRAIN WITH ARTERIES

This 8-parts model facilitates the medical students to get a correct understanding of the external features of the brain and its arterial supply as a whole, as well as the relations between their component portions. External features of the brain: cerebral hemisphere, brain stem, cerebellum. The arterial supply of the brain: sources, vertebral, internal carotid arteries, arterial supply of the cerebellum and cerebrum. Made of PVC plastic. On base. Size: 18.5x14x13.5 cm.

XC-306

STOMACH MODEL

This model shows the morphology of the stomach in a moderate distended state. With the longitudinal section, the model shows the structures of the gastric folds, pyloric sphincter muscles, gastric mucosa and the transitional mucosa of the gastric-esophagus. Made of hard plastic and magnified 2 times the natural size.

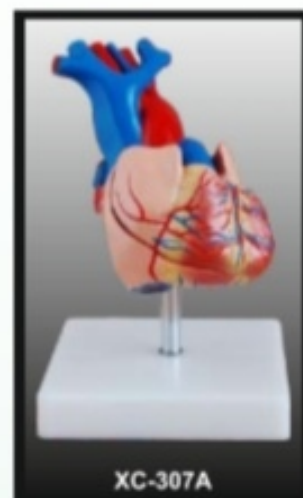


XC-308

XC-315

DIGESTIVE SYSTEM MODEL

Life size Digestive System Model, demonstrates the entire digestive system in graphic relief. Digestive System features: Nose, Mouth cavity and pharynx, Esophagus, GI tract, liver with gall bladder, Pancreas and spleen. The duodenum, caecum and rectum of the digestive system are opened. Dissectible into 3 part. Mounted on baseboard.



XC-307A



XC-315

XC-320

LARYNX, HEART AND LUNGS MODEL

A life-size model separating into 7 parts. The lungs have two removable lobes to show the internal structures, the heart bisects showing atria, ventricles and valves, the larynx bisects and the diaphragm is shown. On base. Size : 36x23x12 cm.



XC-320



XC-306

THE PICTURE SHOWN OF ANY MODEL MAY DIFFER FROM ACTUAL MODEL IN COLOUR

16

IMPORTED ANATOMICAL MODELS



XC - 316

XC - 316

GIANT EYE MODEL

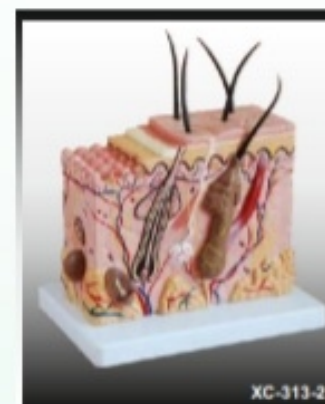
The different parts of the eyeball model are detachable to show the following structures:-

1. Tunica external: showing cornea and sclera with attachments of ocular muscles and optic nerve.
 2. Tunica media: showing the iris, the ciliary body and the choroid.
 3. Tunica internal is retina.
 4. Refraction media: showing the lens and the vitreous body.
- The model is made of PVC plastic. Mounted on stand, 6 times enlarged.

XC-316B

EYE WITH ORBIT

This model shows eyeball with optic nerves and muscles in its natural position in the bony orbit. Dissectible into 10 part. 3 times enlarged.



XC-313-2

XC-313-2

SKIN BLOCK MODEL ENLARGED

This model shows a section of human skin in three dimensional forms. Hair, sebaceous and sweat glands, receptors, nerves and vessels are shown in detail 70 times enlarged.

XC-313

SKIN MODEL ENLARGED

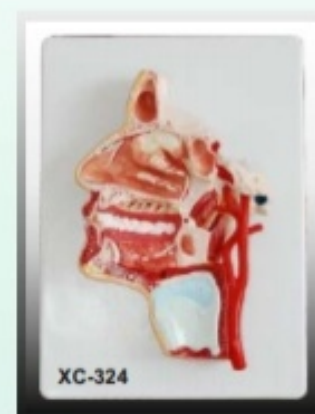
A greatly enlarged (105 times) cross sectional view of the human skin showing three layers and a close-up view of a hair follicle, sweat gland, fatty tissue and more. Front, side and back view. Made of PVC plastic. Mounted on base.



XC-316 B



XC - 313



XC-324

XC-324

MODEL OF THE HEAD

This model shows the interior parts of the mouth cavity and pharynx with network of vessels and trigeminal nerves.

XC-318

BRAIN WITH ARTERIES ON HEAD

This model shows the brain structure inside the skull. Two halves brains can be disassembled into: frontal with parietal lobes, temporal with occipital lobes, half of brain stem, half of cerebellum. Life size dissectible into 9 parts.



XC-318

PEA - 131

MODEL OF HUMAN FUNCTIONAL EYE

An excellent type to study the functions of the human eye. The eyeball has a horizon cut, the upper half of eyeball wall and the inner structures can be removed. With the flexible lens, the model can focus an image on the retina, demonstrates far and short sight and their corrections, needs battery.



PEA-131

ALL THESE MODELS ARE DURABLE AND UNBREAKABLE

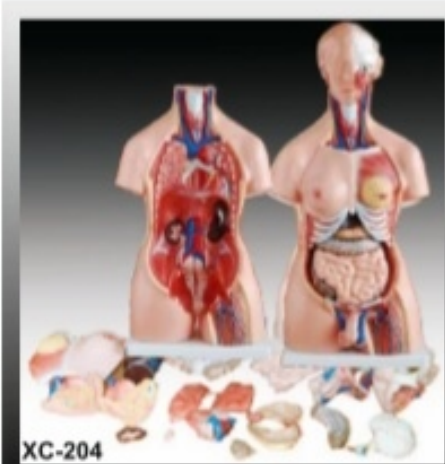


D.P. SCIENTIFIC SOLUTIONS

704, A-BLOCK, NEW TAGORE GARDEN
AMBALA CANTT - 133001 (H.R.) INDIA
E-mail : dpscientificsolutions066@gmail.com
visit us: www.dpscientificsolutions.in
contact us: 85276-76998, 79882-53107

IMPORTED ANATOMICAL MODELS

17



XC-204

XC-204

UNISEX TORSO 23 PARTS (TALL 85 CM)

This outstanding torso features an exposed spine with removable vertebra and spinal cord segments, a female breast plate and interchangeable male and female genitalia. The female organs include a fetus in the womb. Dissectible into 23 parts: torso, female breast plate, head, eyeball, brain, vertebra spinal nerves, lung (2 parts), heart (2 parts), liver, kidney, stomach (2 parts), intestines (4 parts), male genitalia (2 parts), female genitalia with fetus (3 parts). Made of PVC plastic. Mounted on base.

XC-203

TORSO 15 PARTS (TALL 26CM)

This torso features: torso, brain (2 parts), cut calvarium, heart, lung (4 parts), stomach, diaphragm, liver, heart, trachea & esophagus & aorta, pancreas and spleen, intestine etc. Dissectible into 15 parts. Made of PVC plastic. Mounted on base.



XC-203

XC-205/MK-050

TORSO (TALL 50 CM)

This unisex torso features the same as XC-204 but the half size, offering an outstanding educational value. Dissectible into 23 parts: torso, female breast plate, head, eyeball, brain, vertebra spinal nerves, lung (2 parts), heart (2 parts), liver, kidney, stomach (2 parts), intestine (4 parts), male genitalia (2 parts), female genitalia (3 parts). Made of PVC plastic. Mounted on base.

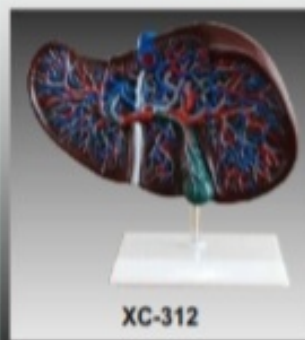


XC-205/MK-050

XC-312

LIVER MODEL

An economical way to study the basic structure of the liver. The complex vessels network in the opened liver, displayed in different colors on this model: hilus vessels, extra-hepatic and intrahepatic bile ducts. Liver mounted on stand.

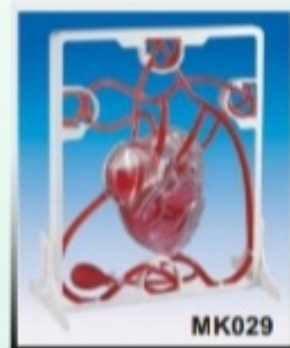


XC-312

MK029

PUMPING HEART

1. A 3-D working plastic heart model with clear chambers. Squeeze bulb pumps simulated blood through clear heart chambers just like real one.
2. Complete heart model scale with display stand.
3. Complete instruction manual, easy to assemble.
4. Acrylic Paints and Brush are included.



MK029

GD/A42004

EMBRYO MODEL

Mounted on stand Made of Advanced PVC 4 weeks old embryo. Shows 12 Positions

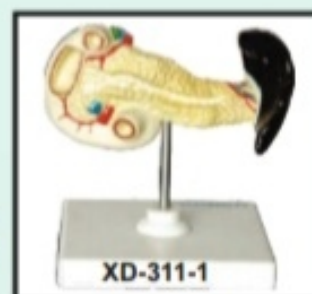
XD-311-1

MODEL OF SPLEEN PANCREAS AND DUODENUM

This natural size model reproduces the pancreas, the spleen and the duodenum. The pancreas is open to show the entire pancreatic duct. This duodenum is partially dissected to expose its nice structure.



GD/A42004



XD-311-1

WE RESERVE THE RIGHT TO SUPPLY SIMILAR MODEL OF OTHER MANUFACTURER UNLESS OTHERWISE STATED

18

IMPORTED ANATOMICAL MODELS

XC - 303C

GIANT SIZE EAR MODEL NEW STYLE

A giant model of the ear, shows the three main structural parts of the hearing organ (external ear, middle ear, internal ear) and the position of the equilibrium organ of human body.

1. **External Ear** : Showing the shape of the auricle and the primary features of the external auditory meatus.
2. **Middle Ear** : Showing the tympanic membrane, the three auditory ossicles (hammer, anvil, stirrup) and the eustachian tube.
3. **Internal Ear** : Showing the vestibule, cochlea and the three semicircular canals of the osseous labyrinth.

Made of PVC plastic. Mounted on plastic base. 5 times enlarged. Dissected into 6 parts.



XC - 303C



XC - 403

XC-403/TH-001

TOOTH HYGIENE SET - CONSISTS OF TEETH, TONGUE AND PALATE WITH BRUSH

This model is to serve for demonstration in mouth protection and relative clinical teaching. Consists of gum, teeth, tongue and palate. It demonstrates teeth form and oral cavity cleaning and protection.

TH-002

DENTAL MODEL SMALL

- Model with Plastic Hinge



TH-002



XC - 305

XC-305

EXPANSION MODEL OF HUMAN TEETH

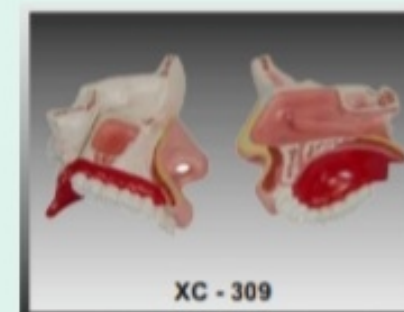
This model shows the morphological differences of the incisor, canine and molar teeth. Dissections of the canine and molar teeth demonstrate the structure of enamel, dental pulp cavity. Enlarged 12 times, 3pcs set.



XC-317

EXPANSION MODEL OF URINARY BLADDER

This model shows the male urinary bladder with the prostate gland surrounding the urethral. Dissected medially to expose both internal and external structures.



XC - 309

XC - 309

MODEL OF THE ANATOMICAL NASAL CAVITY

This model helps the students to understand the external and internal structures of the nasal cavity.

1. **External Nose** : Show the section of the nasal bones and cartilages.
2. **Nasal Cavity** : On the lateral nasal wall show the superior, middle and inferior nasal conchae project medially into the nasal cavity forming the superior, middle and inferior nasal meatuses.
3. **Paranasal Sinuses** : Shows the frontal, sphenoid and maxillary sinuses. Magnified 1/2 the natural size. Made of PVC plastic.

FOR COMPLETE RANGE OF DENTAL MODELS PLEASE SEE PAGES NO. 52 & 53

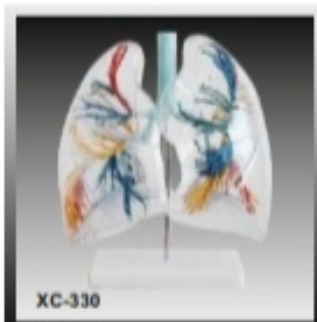


D.P. SCIENTIFIC SOLUTIONS

704, A-BLOCK, NEW TAGORE GARDEN
AMBALA CANTT - 133001 (H.R.) INDIA
E-mail : dpscificsolutions066@gmail.com
visit us: www.dpscificsolutions.in
contact us: 85276-76998, 79882-53107

IMPORTED ANATOMICAL MODELS

19



XC - 330

MODEL OF THE TRANSPARENT LUNG SEGMENT

This model presents 10 segments in the right lung and 8 in the left. The distributions of the bronchial tree can be observed through the transparent lungs.

1. **Right Lung:** right upper lobe (3 segments), right middle lobe (2 segments), right inferior lobe (5 segments).
2. **Left Lung:** left upper lobe (4 segments), left inferior lobe (4 segments).
3. **Distribution of the bronchial tree:** right bronchus, left bronchus.
4. **Hilus of lung.**

The lungs are made of transparent plastic. The trachea and bronchial tree made of PVC plastic. Enlarged 2 times.

XD-330-1

LUNG DEMONSTRATION MODEL

Students can demonstrate how the lungs work with this transparent lung model. Constructed of two rubber balloons, rubber stopper and bell jar. Pull the thin rubber diaphragm at the bottom of the jar down to see the lungs inhaling. Push it in and the balloons will collapse (exhaling) Size: 17x17x20

XC-301

MAGNIFIED HUMAN LARYNX MODEL

A functional model that demonstrates movements of the epiglottis and cartilages in the voice box. It helps the students to require an understanding of the morphology and structure of the respiratory tract and phonetic organ. On base. 3 times enlarged. 3-parts dissectible.

XC-311

LIVER, PANCREAS AND DUODENUM MODEL

An easy way to study the basic structures of the liver, spleen, blood vessels and pancreas. External structures are illustrated as well as the pancreatic duct of the pancreas. This model also show the abdominal aorta and inferior and interior vena cava. Life size. Dissectible into 3 part. Made of PVC Plastic. Mounted on stand.

XC-302

MAGNIFIED PULMONARY ALVEOLI MODEL

A model shows the small branches of principal bronchus:

1. Section of bronchiole of no cartilage.
2. The relation between pulmonary alveoli & terminal bronchiole.
3. The structure of alveolar sac and alveolar duct.
4. The capillary rete in the alveolar septa.

Made of PVC plastic and mounted on base.

XC-310-3

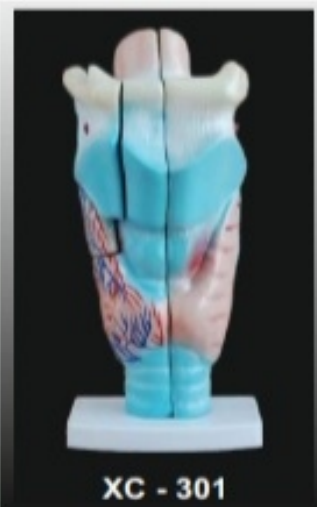
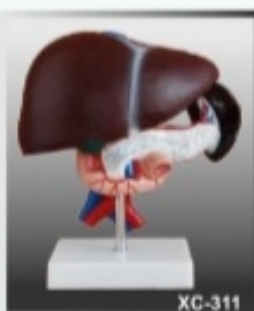
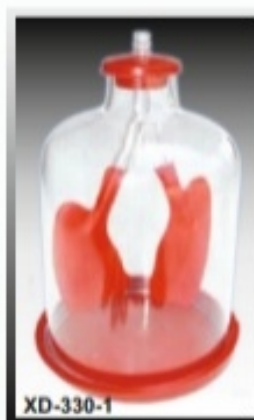
HUMAN KIDNEY WITH ADRENAL GLAND

The detailed life-size model features the kidney, adrenal gland, renal and adrenal vessels and upper portion of the ureter. Dissectible into 2 parts to reveal the cortex medulla, cortex vessels and renal pelvis. Model can be removed from the stand for instruction. Life - size Mounted on stand.

XC-310-1 KIDNEY MODEL (1 PART)

XC-310-2 KIDNEY MODEL (2 PART)

The coronary section of the right kidney shows the renal hilus, renal blood vessels, ureter, renal pelvis of the kidney the renal substance is demonstrated by its medulla and cortex, medullary pyramid, papillae etc. Made of PVC plastic, 2 times enlarged. Mounted on stand.



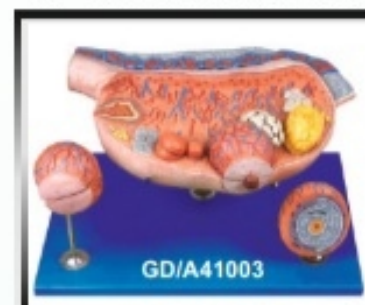
IMPORTED ANATOMICAL MODELS

20

GD/A42008

FETUS WITH VISCUS AND PLACENTA

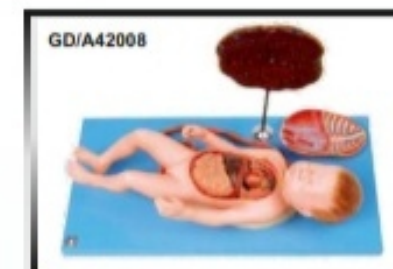
1. Separated into 13 parts as follow: Placenta, umbilical cord, abdominal cover, lungs, heart, thymus, diaphragm, liver, stomach, intestine, body.
2. Shows a female fetus at the end the pregnancy with placenta and umbilical cord.
3. Made of Advanced PVC.



GD/A41003

OVARY MODEL

1. Consists of 8 parts, mounted on stand.
2. Show ovary, primary and secondary ovarian follicles, ovum, ovulation, ovum, corpus luteum, corpus albicans.
3. It demonstrates the procedure of ovum's development.
4. Shows 10 positions.
5. Made of advanced PVC.



CHILD BIRTH MODEL



XC-409A

XC-409

NEWBORN BABY MODEL

XC-409A

NEWBORN BABY MODEL (MALE)

XC-409B

NEW STYLE NEWBORN BABY MODEL (F)

The size and configuration of this model is almost as same as the normal newborn baby. The head, upper limbs, lower limbs and all joints are flexible. It can demonstrate the characteristic of the newborn baby and all kind of operations in clinic education: includes different parturition method, newborn baby bath etc. Made of soft PVC plastic. Washable. Length: 52 CM, head diameter: 34CM.



XC-409B

XC-410

NEWBORN INTUBATION BABY MODEL

This model is used to demonstrate the newborn baby intubation and train the students to learn intubation skills. Served as an ideal model for medical college, nursing schools and hospital etc. Made of elastic PVC plastic.



XC-410

XC - 414

DEVELOPMENT PROCESS FOR FETUS

1. Normal uterus, shows the inner genitals of female.
2. Shows the embryo and uterus in the first month of gestation, placenta is shown also.
3. Shows the fetus & uterus in the second month of gestation, the embryo is just looks like human.
4. Shows the fetus and uterus in the third month of gestation, the height of the fetus is about 9 cm.
5. Shows the fetus and uterus in the fourth month of gestation, the height of the fetus is about 16 cm.
6. Shows the fetus and uterus in the fifth month of gestation, the height of the fetus is about 25 cm.
7. Shows the fetus and uterus in the sixth month of gestation, the height of the fetus is about 30 cm.
8. Shows the fetus and uterus in the seventh month of gestation, the height of the fetus is about 35 cm.
9. Shows the fetus and uterus in the eighth month of gestation, the height of the fetus is about 40 cm.
10. Shows the fetus and uterus in the ninth month of gestation, the height of the fetus is about 45 cm.

Dimension: Natural size, on the base.

GD-F6

MODEL FOR COURSE OF DELIVERY (LEOPOLD MANUVERS SIMULATOR)

The model basing on the mechanism of normal labor, shows the cardinal movements of engagement: descent-flexion-internal rotation of the head-extension-rotation-external rotation of the head-internal rotation of the shoulders at accouchement. Suitable for teaching the mechanism of normal labor in medical colleges and nursing schools.

XC-414-A

New

DEVELOPMENT PROCESS FOR FETUS (HALF SIZE)

This model shows relationship between fetus and uterus in 1st, 2nd, 3rd, 4th, 5th, 6th, 7th month pregnancy, and twins course in the 5th month. Consist of 8 parts



XC-414A



XC - 414

FOR PRICES OF ALL THE MODELS, PLEASE SEE ENCLOSURE OR ASK FOR THE PRICE LIST

ALL PICTURE ARE FOR REFERENCE ONLY. ACTUAL MODELS MAY DIFFER A LITTLE FROM THE PICTURES SHOWN



D.P. SCIENTIFIC SOLUTIONS

704, A-BLOCK, NEW TAGORE GARDEN
AMBALA CANTT - 133001 (H.R.) INDIA
E-mail : dpscientificsolutions066@gmail.com
visit us: www.dpscientificsolutions.in
contact us: 85276-76998, 79882-53107

IMPORTED ANATOMICAL MODELS

21

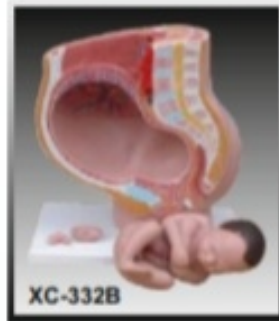


XC-332B

XC-332B

HUMAN FEMALE PREGNANT PELVIS SECTION WITH FETUS

Life size: shows median section of the right half of female pelvis. A9 month fetus is removable. A-3 month fetus is included for comparison. An excellent model for study of Human Embryo Development. On base. Made of PVC plastic.



XC-332A

XC-332A

HUMAN FEMALE PELVIS SECTION (1 PART)

The model is a median section shows female genital organs with bladder and rectum. The abdominal and pelvis muscles are shown detailed. Made of PVC plastic.

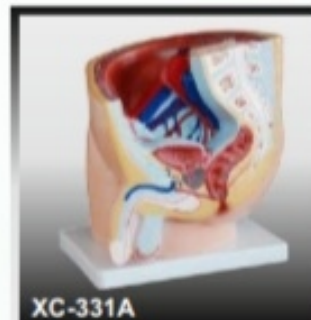
XC-331A

HUMAN MALE PELVIS SECTION (1 PART)

This median section model shows male genital organs with bladder and rectum in male pelvis. Made of PVC plastic. On base.



XC-332A

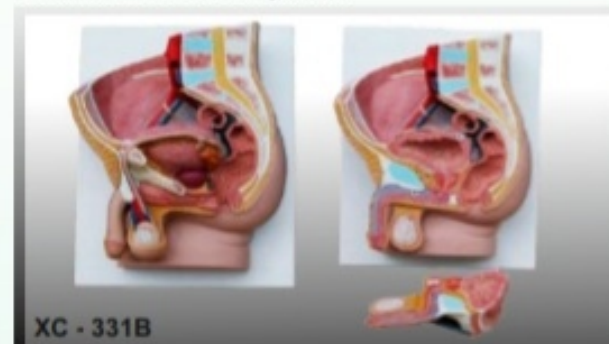


XC-331A

XC - 331B

HUMAN MALE PELVIS SECTION (2 PART)

The model is a median section shows male genital organs with bladder and rectum. The abdominal and pelvis muscles are shown detailed. Made of PVC plastic.



XC - 331B

XC - 331C

ADVANCED MALE INTERNAL & EXTERNAL ORGANS

The model clearly and accurately demonstrates the anatomy of rectum, seminal vesicle, bladder, pelvic bone, prostate, urethral sphincter muscle, urethral meatus, glans, scrotum, pelvic diaphragm and anus. This model also allows you practice proper insertion of a catheter using sterile techniques.

XC - 332C

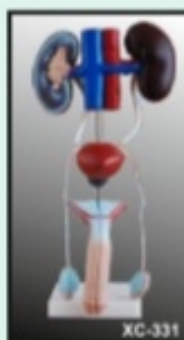
ADVANCED FEMALE INTERNAL & EXTERNAL ORGANS

The model clearly and accurately demonstrates the anatomy of rectum, uterus, bladder, pelvic bone, urethral, sphincter muscle, clitoris, urethral meatus, labium minora, vagina, labium majora, pelvic diaphragm, and anus. This model also allows you practice proper insertion of a catheter using sterile techniques.

XC - 331

MALE UROGENITAL SYSTEM

This is intended for schools and colleges as a visual aid in teaching physiology and hygiene to help the students to understand the external features of the urogenital system and the internal structures of the kidney, urinary bladder, penis and testicle. Made of soft PVC plastic.

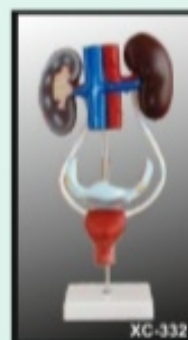


XC-331

XC - 332

FEMALE UROGENITAL SYSTEM

This model serves as a teaching model for teaching to teach the female urogenital system in schools and colleges. The model shows kidney, ureters, urinary bladder, uterus, accessories of uterus, vagina, ovary membrane, ligaments, uterus ligament and artery etc. Made of PVC plastic.



XC-332

WE RESERVE THE RIGHT TO SUPPLY SIMILAR MODAL OF OTHER MANUFACTURER UNLESS OTHERWISE STATED

IMPORTED NURSE TRAINING MODELS

22



GD/L69D

GD/L69D

ADVANCED NEONATAL PERIPHERAL AND CENTRAL VEIN INTUBATION SIMULATOR

Designed according to the physiological and anatomical characteristic of neonate, made of imported plastic material, soft and elastic skin, easy to clean and provide technology of inserting into central vein catheter via peripheral vein

Features:-

- Transparent chest wall and made of special material, perspective effect of bilateral venous Chanel
- Correct anatomical position: basilica vein, cephalic vein, jugular vein, subclavian and superior vena
- Direct observation of rib and heart, measure the correct inserted length of catheter
- Transparent part of the superior vena and visible of the ductal position in the case of correct catheterization or the catheter is invisible
- Exercise of standard venous catheterization position

GD/J140

BABY OBSTRUCTION/INFANT C.P.R. SIMULATOR

Full-body lifelike baby specifically designed for professional training of Heimlich manoeuvre, foreign-body airway obstruction feature provide a realistic condition for releasing of a foreign body obstruction through back blows and chest thrust techniques



GD/J140



GD/J15

GD/J15

NEONATE INTUBATION TRAINING MODEL

Feature:

- Realistic anatomy of neonate
- Oral and nasal intubation
- Lifelike material
- Directly observe the expansion of lungs and stomach by insufflating air into the tube and stomach so as to verify if the ube position is right

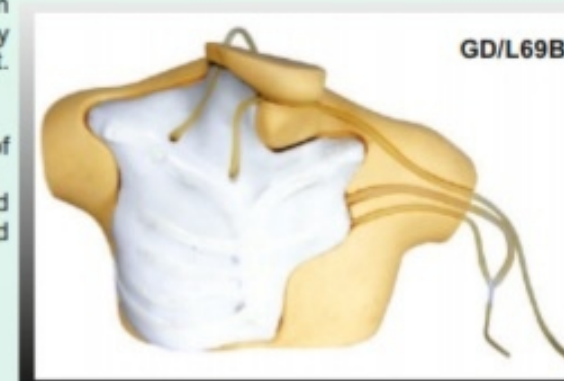
GD/L69B

CENTRAL VENOUS CATHETERIZATION SIMULATOR

The cervical veins are filled with red simulative blood for internal jugular vein and subclavical vein puncturing use. Squeeze bulb can simulate carotid artery pulse. With accurate anatomy, palpation is exactly the same as on a patient. Replacing of the internal tubing and skin is extremely easy.

Features:-

- Cervical anatomical landmarks are quite clear and indicate structures of the sternal notch, clavicle, right cervical ribs, sternocleidomastoid etc.
- Venous system in the deep part of left neck consists of common carotid artery, internal jugular vein, external jugular vein, subclavical vein, and brachiocephalic vein
- Internal jugular vein puncture and cannulation can be exercised
- Subclavical vein puncture and cannulation can be exercised
- Carotid artery pulse can be simulated
- The skin and veins can be replaced and students will feel an apparent
- "POP" when the needle has been thrust into the vein
- The heart floating swan-ganz intubation can be exercised



GD/L69B

ALL THE ABOVE MODELS ARE MADE OF SOFT AND HALF HARD PVC PLASTIC MATERIAL

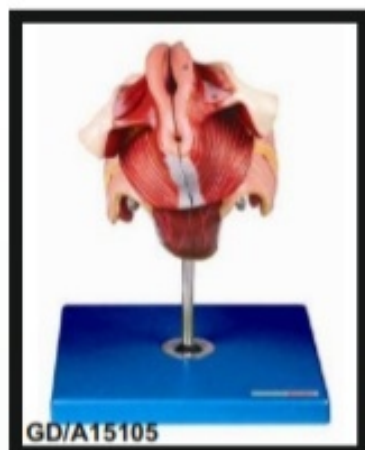


D.P. SCIENTIFIC SOLUTIONS

704, A-BLOCK, NEW TAGORE GARDEN
AMBALA CANTT - 133001 (H.R.) INDIA
E-mail : dpscificsolutions066@gmail.com
visit us: www.dpscificsolutions.in
contact us: 85276-76998, 79882-53107

IMPORTED ANATOMICAL MODELS

23



GD/A15102

MALE GENITAL ORGANS MODEL

Dissected in median and mounted on a stand Shows the penis, prostate, bladder, seminal vesicle, spermatic cord and inguinal canal and base Shows 72 Positions

GD/A15105

FEMALE GENITAL ORGANS

Dissected & mounted on a stand Shows internal and external female genital organs Shows 40 Positions Made of Advanced PVC



GD/A15102



XD-151

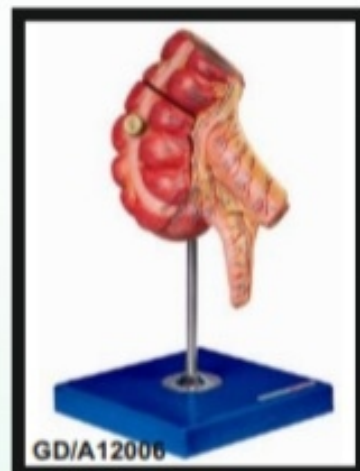
HUMAN PLACENTA ANATOMISE MODEL

- Shows the structure of placenta and the relation between placenta and umbilical cord
- Mounted on stand
- Made of Advanced PVC
- Seven positions are displayed

GD/A12006

APPENDIX AND CAECUM

Made of advanced PVC Mounted on a stand, Natural size Shows wall of the caecum and appendix Separated into 2 parts Shows 17 positions



GD/A12006



XC-436A

MAGNIFIED UTERUS MODEL

With the coronal section this model show:

1. Uterus
2. The cervix is divided into a supra-vaginal portion and a vaginal portion.
3. The ligaments of the uterus are eight in number.
4. The fallopian tubes.
5. The Ovaries



XC-333

XC-333 URINARY SYSTEM MODEL

The model shows the structures of retroperitoneal cavity, pelvis with bones and muscles, inferior vena cava, aorta with its branches, upper urinary tract, kidney with adrenal gland, ureter, bladder, etc. Dissectible into 4 parts.

XC-429

FEMALE INTERNAL & EXTERNAL GENITAL ORGANS

This model is served as a visual aid in teaching human anatomy in nursing and medical college. It shows the female genital including uterus, uterus appendix (fallopian tube, ovary and its membrane, ligament teres uteri, ligament ovary proprium), vagina and the structure of external genital organ. Part of uterus & vagina are dissected to show its internal structures. Size Life size.



XC-429



GD/A18001

GD/A18001

NEURON MODEL

Consists of 2 parts Shows neuronal body and nerve fiber, neuronal axon hillock, dendritic arbor, neurofilament etc Shows 15 positions Made of Advanced PVC

IMPORTED NURSE TRAINING MODELS

24

GD/HS39



GD/HS39

FULL-FUNCTIONAL VEIN INJECTION ARM (LIFE LIKE DELTOID TRAINING MANIKIN FOR DRUG ADMINISTRATION)

Complete Venipuncture Arm:-

- Venous access-Basilic V Cephalic V Digital V Dorsal Metacarpal V Median Basilic V Accessory Cephalic V Extensive venipuncture system Median Antebrachial V Median Cephalic V Median Cubital V Thumb
- This revolutionary training arm provides complete venous access for IV therapy and phlebotomy, plus sites for intramuscular and intradermal injection. An extensive 8-lined vascular system allows students to practice venipuncture at all primary and secondary locations, including starting IVS and introducing Over the Needle IV Catheters. The Venous system simplifies setup with only one external fluid bag supplying artificial blood to all veins simultaneously. The dorsal surface of the hand includes injectable
- Metacarpal, digital and thumb veins. The antecubital fossa includes the median cephalic, median basilica, and median cubital veins. Venipuncture can also be performed along the basilica, cephalic, accessory cephalic and median antebrachial veins. Intramuscular injection may be performed in the deltoid muscle and intradermal injection sites are located in the upper arm. Intramuscular injections into the deltoid muscle are enhanced by the soft, lifelike skin and by the natural bony landmarks in the region. Intramuscular injections using distilled water will create characteristic skin welts at designated sites on the upper arm.
- The realism of the advanced venipuncture and injection Arm is truly amazing. The soft, flexible fingers are molded separately with extreme attention paid to every detail-right down to the fingerprints! Flexion of the wrist helps students to develop manipulates skills. The replaceable skin rolls as the veins are palpated and a discernable "POP" is felt when entering the veins. The molding process reproduces the fine details of the skin to make the arm look and feel alive. Valves in the veins can be seen and palpated on the skin surface
- Simulated veins and skins are completely replaceable to keep this training arm looking and working like new. Under normal use, hundreds of injections may be performed before the veins or skins need to be replaced. Complete replacement kits are available and easy to use. To extend the life of the veins and aerosol sealant is available to seal punctures and prevent leakage.



GD/F9B

GD/F9B

ADVANCED FEMALE CONTRACEPTION PRACTICE MODEL

Features:

- This Model simulates ante version uterus, fallopian tubes, labium, vagina and transparent abdominal wall cover in the pelvic cavity.
- Expansion of vagina, the use of vaginal speculum, operation of female condom, contraceptive sponge and cervical cap.

GD/F5M

MALE CONDOM TRAINING MODEL

Features:

- This model of an erect penis with testicles is used to quickly learn how to use a condom safely.
- The anatomical structures and its firmness are absolutely realistic, so that your students can train putting on and removing a condom in a realistic way.

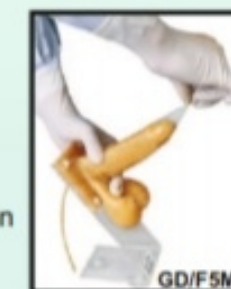


GD/H35

GD/H35

ENEMA AND ASSISTED DEFECATION TRAINING SIMULATOR (LIFE LIKE ENEMA TRAINING FOR DRUG ADMINISTRATION)

1. Simulate bed patient and old people, who can't defecate by themselves.
 2. The abdominal wall can be opened so as to directly observe the operation.
 3. Disassembly and washing is very simple.
- Size: 51cm*40cm*47cm G.W.:5.5kg



GD/F5M

ALL THESE MODELS ARE WEATHERPROOF & WASHABLE

FOR PRICES OF ALL THE MODELS, PLEASE SEE PRICE LIST ENCLOSED OR ASK FOR THE PRICE LIST

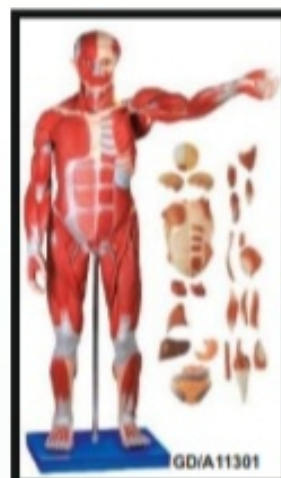


D.P. SCIENTIFIC SOLUTIONS

704, A-BLOCK, NEW TAGORE GARDEN
AMBALA CANTT - 133001 (H.R.) INDIA
E-mail : dpscientificsolutions066@gmail.com
visit us: www.dpscientificsolutions.in
contact us: 85276-76998, 79882-53107

IMPORTED NURSE TRAINING MODELS

25



GD/A11301

MALE MUSCLE FIGURE WITH INTERNAL ORGANS (TALL 78 CM)

1. This model consists of 27 parts, such as muscles of chest wall and abdomen, muscles of upper and lower limbs, skull, brain and viscera. It shows the structure of head, neck, torso, upper and lower limbs, muscles, muscular tendon, ligaments, viscera, blood vessels, brain etc.
2. Material: Advanced PVC and painted with imported paint

XC-407

HUMAN TRACHEA INTUBATION MODEL WITH MONITOR

XC-407-B New

HUMAN TRACHEA INTUBATION MODEL WITHOUT MONITOR

This model is designed as a teaching model for training the medical students, basic clinic nurses and first aid people to demonstrate and practice trachea intubation through mouth.

1. Trachea in intubation through mouth.
2. Compare pupils: One is normal, another is large.



GD/J50 AIRWAY INTUBATION SIMULATOR

Features:

- Accurate anatomical parts.
- Oral or Nasal Cavity intubation.
- Allows observing the suction position from side face so as to instruct correct method of the intubation skill.
- Wrong operation, stomach inflating or laryngoscope compressing the teeth will activate warning prompting.



GD/J55

MULTI FUNCTIONAL AIRWAY MANAGEMENT MODEL

Features:

- Anatomically accurate full size mouth, tongue, airway and esophagus.
- Perfect for placement of endotracheal tubes.
- Respiratory sound auscultation.
- Oral, nasal intubation.
- Oral, nasal suction.
- Soft neck with cricoid cartilage permits classic Sellick maneuver needed to provide better view of the vocal cords.

XC-405

NURSE BASIC PRACTICE TEACHING MODEL

- This training model is designed according to human anatomy and suitable for nursing schools, colleges and hospitals for demonstration and practice.

- It has 5 parts and can demonstrate 15 operations:-

Part 1: Upper and front part of male body.

Part 2: Left arm

Part 3: Male lower abdomen and perineum

Part 4: Buttock

Part 5: Female perineum.



GD/HS10C

ADULT INTRAMUSCULAR INJECTION TRAINING MANIKIN (LIFE LIKE MANIKIN FOR GLUTEAL INTRA MUSCLE TRAINING FOR DRUG ADMINISTRATION)

Structure of left gluteal: osteal marks, gluteal muscles, ischiadic nerve and veins.

Left gluteal can be taken off. So it is easy to observe internal structure and make sure position of ischiadic nerve and veins. Gluteal intramuscular injection training.



26

IMPORTED NURSE TRAINING MODELS

XC - 434

INJECTABLE TRAINING ARM MODEL

This arm model can demonstrate the following items:

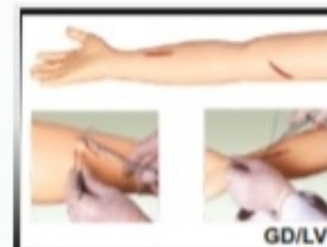
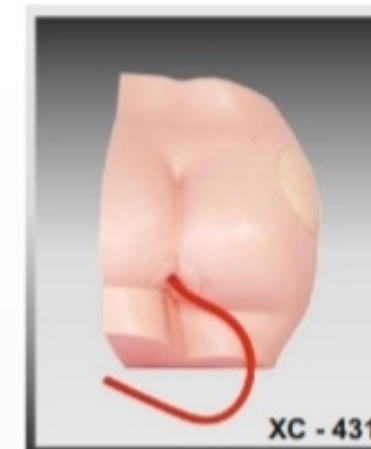
1. Vein phlebotomy on elbow forearm.
2. Vein injection on elbow forearm.
3. Vein blood transfusion on elbow forearm.
4. Vein liquid transfusion on elbow forearm.
5. Muscular injection on deltoid on the side of upper limb.



XC - 431

BUTTOCK INJECTION MODEL

This model shows the location for muscle injection on the buttock, supply for training the students to learn injection skills.



GD/LV1

ADVANCED SURGICAL SUTURING ARM MODEL

1. Allows student to practice cut, suturing, stitches release, enswathing etc.
2. The elasticity and flexibility of skin allows practice hundreds times.
3. If all the initial wounds have been sutured, student can cut the arm in other place for new training of suturing.

GD/LV2

ADVANCED SURGICAL SUTURE LEG

- This model Advanced Surgical Suture Leg allow students to practice cut, suturing, stitches release, enswathing, etc.
- The elasticity and flexibility of skin can make it for practice hundreds times.
- If all the initial wounds have been sutured, students can cut the leg in other place for new training of suturing.



GD/HS6E

NEONATE SCALP VENIPUNCTURE MODEL

Features:

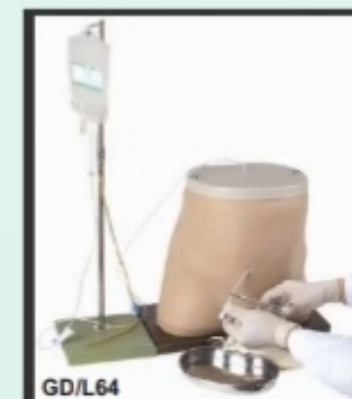
- This model has main veins of scalp, including venae temporales superficialis vein and venae frontales, and can be used to infusion, injection and phlebotomy.
- There is obvious feeling when needle penetrates into the veins. Blood flash back indicates proper insertion;
- These operations won't cause leaks.



GD/L64

PERITONEAL DIALYSIS SIMULATOR

This Model is a specially designed simulator for the medical staff to practice the skill of peritoneal dialysis. Fistula orifice is in the realistic position, and the simulative liquid flow out through it. Standard Equipment includes Catheter, Disposable waterproof fabric, Infusion Stand, Liquid Bag, Deluxe Portable Box



PLEASE INSIST ON BUYING ORIGINAL XC/GD MODELS AND NOT THE CHEAPER UNBRANDED

THE ACTUAL PHOTOGRAPH MAY DIFFER FROM THE PICTURE SHOWN DUE TO CONSTANT IMPROVEMENT



D.P. SCIENTIFIC SOLUTIONS

704, A-BLOCK, NEW TAGORE GARDEN
AMBALA CANTT - 133001 (H.R.) INDIA
E-mail : dpscientificsolutions066@gmail.com
visit us: www.dpscientificsolutions.in
contact us: 85276-76998, 79882-53107

IMPORTED NURSE TRAINING MODELS

27



GD/H100S BASIC COMBINATION NURSING MANIKIN

Full-Body Life Like Male Manikin
Specially Designed for Professional Trauma Nursing Care
High Quality Manikin provides wide range of exercises

NURSING SKILLS:

- | | |
|--|---|
| 1. Bed Bathes, Dressing and Undressing | 11. Tracheotomy Care |
| 2. Hair Washing | 12. Organs Structure of Thorax |
| 3. Face Washing | 13. Venipuncture and Injection, Transfusion |
| 4. Irrigation of the Eyes and Ears | 14. Deltoid Injection |
| 5. Oral Cavity Care | 15. Male Urethral Catheterization |
| 6. Oxygen Inhalation | 16. Female Urethral Catheterization |
| 7. Nasal Feeding | 17. Gluteus Injection |
| 8. Lavage | 18. Ostomy Irrigation |
| 9. Oral Cavity Intubations | 19. Organs Structure of Addominal Cavity |
| 10. Nasal Cavity Intubations | |



GD/H2 MULTI-FUNCTIONAL NURSING MANIKIN

(LIFE LIKE MANIKIN FOR DRUG ADMINISTRATION FOR INTRAVENOUS INJECTION, ENEMA, LOCAL INTRA MUSCULAR INJECTION, INTRA CARDIAC INJECTION, TRAINING & OTHER ROUTES OF DRUG ADMINISTRATION)

- | | | |
|-------------------------------|-----------------------|-------------------------------------|
| 1. Face Washing and Swab Down | 8. CPR First Aid | 15. Deltoid Puncture |
| 2. Oral Cavity Nursing | 9. Mammary Nursing | 16. Deltoid Subcutaneous Injection |
| 3. Tracheotomy Nursing | 10. Thoracic Puncture | 17. Vein Injection |
| 4. Oxygen Inbreathe | 11. Liver Puncture | 18. Vein Puncture |
| 5. Nasal Feeding | 12. Celiac Puncture | 19. Vein Transfusion |
| 6. Stomach Washing | 13. Medulla Puncture | 20. Female Catheter |
| 7. Intracardiac Injection | 14. Lumbar Puncture | 21. Female Clyster |
| | | 22. Gluteus Intramuscular Injection |

THERE IS A WIDE RANGE OF EXERCISES POSSIBLE ON THESE MODELS

28

IMPORTED NURSE TRAINING MODELS

XC-401A HIGH QUALITY NURSE TRAINING DOLL (MALE) UNISEX

XC-401B HIGH QUALITY NURSE TRAINING DOLL (FEMALE) UNISEX

Full-body Lifelike Mannequin
Specially designed for Professional Nursing Training
High Quality Mannequin provides wide range of exercises possible including both first aid and emergency situations.

NURSING SKILLS:

1. Lifting, Carrying and Moving of the patient
2. Bed Care of the patient
3. Bathing (Genital Care) Hair washing and face washing
4. Oral Cavity Care
5. Care and Cleaning of the Nose
6. Prevention of Bedsores (Decubitus)
7. Prevention of Muscles Cramps
8. Prevention of Pneumonia
9. Prevention of Blood Clots (Thromboses)
10. Prevention of Thrush and Parotitis
11. Physiotherapy
12. Inhalation Therapy
13. Oxygen Inhalation
14. Resuscitation: Mouth to Nose, Mouth to Mouth and other methods
15. Bandages
16. Irrigations and Lavages: Gastric (stomach) lavage, Ostomy Irrigation, Intestinal Irrigation, Irrigation of the Bladder, Irrigation of the Vagina
17. Enemas
18. Urethral Catheterization for Male and Female
19. Injection and Transfusions: Hypodermic Injections, Intramuscular Injections, Hypodermic Infusions



XC-401A



XC-401B

XC - 401

MULTI FUNCTIONAL PATIENT CARE NURSING MANIKIN (FEMALE)

XC - 401-M New

MULTI FUNCTIONAL PATIENT CARE NURSING MANIKIN (MALE)

The model is made of soft and half-hard PVC plastic, solid and durable, easy to use. All joints are movable, can be belt, all parts can be disassembled. It can demonstrate following items:

- | | |
|--|---------------------------------------|
| 1. Washing face and bathing the bed-ridden patient | 12. Abdomen Puncture |
| 2. Care and cleaning of the mouth | 13. Medulla Puncture |
| 3. Care and cleaning of trachea dissection | 14. Lumbar Puncture |
| 4. Inhalation of oxygen (nasal cork or nasal catheter) | 15. Deltoid injection |
| 5. Nasal Lavage | 16. Deltoid hypodermic injection |
| 6. Stomach Lavage | 17. Vein injection |
| 7. Heart Infection | 18. Vein puncture |
| 8. Heart resuscitating on chest | 19. Vein transfusion |
| 9. Chest Puncture | 20. Vein blood transfusion |
| 10. Liver Puncture | 21. Urethral catheterization of women |
| 11. Kidney Puncture | 22. Muscular injection on buttocks |

XC - 401
XC - 401-M



XC-408

ELECTRONIC URINARY MODEL

This model can be demonstrated some functions: Catheterization of Male, Catheterization of Female and intestinal irrigation.



XC-408

ALL THE ABOVE MODELS ARE MADE OF SOFT AND HALF HARD PVC PLASTIC MATERIAL



D.P. SCIENTIFIC SOLUTIONS

704, A-BLOCK, NEW TAGORE GARDEN
AMBALA CANTT - 133001(H.R.) INDIA
E-mail : dpscientificsolutions066@gmail.com
visit us: www.dpscientificsolutions.in
contact us: 85276-76998, 79882-53107

LIFE SUPPORT TRAINING MODELS (CPR)

29



GD/CPR10280

GD/CPR10280

ADVANCED ADULT CPR TRAINING MANIKIN WITH MONITOR AND PRINTER

This CPR manikin meets AHA (American Heart Association 2015 Guidelines & ECC)

1. In this model there is Light Indicator display for Correct and Incorrect Artificial respiration (Mouth-to-Mouth)
2. There is light Indicator for correct compression position display, wrong compression position display, digital counter.
3. This model simulate the patient revival through first aid by measures of heart pressure and mouth-to-mouth respiration.
4. This model also shows whether the operation is correct or not by light indicator, audio prompting and grade printing.

An Ideal model for use in Nursing College, Medical College, Hospitals & Nursing Training Institutes.



GD/CPR10160

GD/CPR10160

ADVANCED CHILD CPR TRAINING MANIKIN

This CPR manikin meets AHA (American Heart Association 2015 Guidelines & ECC)

In this model there is Light Indicator Display for Correct and Incorrect Artificial Respiration (Mouth-to-Mouth), Correct Compression position display, Wrong compression position display.

This model simulate the patient revival through first aid by measures of Heart Pressure and Mouth-of-Mouth respiration.

GD/CPR10150

ADVANCED INFANT CPR TRAINING MANIKIN

This CPR manikin meets AHA (American Heart Association 2015 Guidelines & ECC). In this model there is Light Indicator Display for Correct and Incorrect Artificial Respiration (Mouth-to-Mouth). There is Light Indicator Display for Correct Compression Position Display, Wrong Compression Position Display. This Model Simulate the patient revival through fist aid by measures of Heart pressure and Mouth -of -Mouth Respiration.



GD/CPR10170

GD/CPR10170

HALF-BODY CPR TRAINING MANIKIN

This CPR manikin meets AHA (American Heart Association 2015 Guidelines & ECC)

CPR Manikin feature:

Can perform airway open. Can perform artificial aspiration, judge inflation volume by chest rise. External chest compression, correct compression depth:5-6 cm Correct compression site, prompt correct buzzer sound Excessive compression site, prompt alarming buzzer sound. Operation frequency:> 100#/min, with "tick" sound Power: battery



GD/CPR10150

AED TRAINER / CPR TRAINING MANIKIN (TORSO) FOR MASS EDUCATION

30

ATX 03 MB001B+ADULT CPR TRAINING MANIKIN (TORSO)

(MADE IN SPAIN)

- ▶ The Manikin is the only manikin in the market which includes both Adult and Child CPR simulator in one product.
- ▶ Economics and profitable products.
- ▶ Light weight: 2.2Kg makes easier storing and transport for trainers.
- ▶ The selector on the back allows to chose Adult or Child positions.
- ▶ Adult and Child positions include a clicking sound for checking the correct compression depth according to Guidelines 2015
- ▶ "N" position on the selector allows to check without a clicking sound and without depth limit the acquired skills.
- ▶ The Manikin breathing system is real and exclusive on the market.
- ▶ The Unique valve design allows to be connected nose-mouth-lung.
- ▶ The non-return system of the valve doesn't allow students inhale air from the lung bag helping to avoid Contagions.
- ▶ If the exclusive articulated head is not tilted properly and the nose is not pinched there will be no chest rise.
- ▶ Manikin is essential as complement of the AED trainer (not included).
- ▶ The torso design of manikin and its size is proper to use AED trainer.
- ▶ The Manikin skin material is proper for using AED training pads and easy cleaning.



ATX 03

ATX 04 MB001B +(AD) ADULT CPR TRAINING MANIKIN ADVANCE (TORSO)

(MADE IN SPAIN)

MAKE SURE THE VALVE

- ▶ Is correctly assembled.
- ▶ Is correctly attached to the head

MAKE SURE THE LUNG

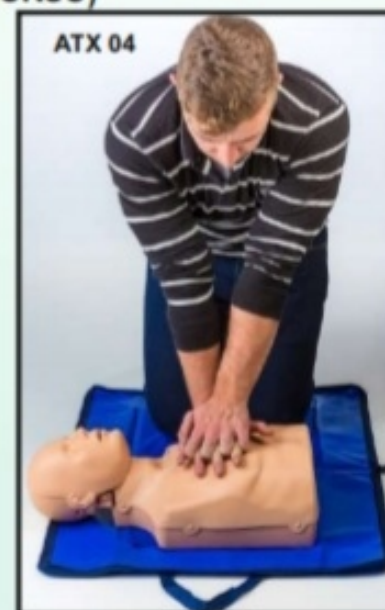
- ▶ Is Placed on the marks indicated by the adhesive.
- ▶ Rests loosely on the neck.
- ▶ Is not twisted or wrinkled.
- ▶ Is not broken and/or air leaking
- ▶ Is not damp inside.

MAKE SURE THE HEAD

- ▶ Is correctly attached to the two buffers linking it to the torso.
- ▶ Is tilted backwards correctly.

MAKE SURE THE MASK

- ▶ Is correctly attached to the head.
- ▶ Is properly adjusted using the upper tab.
- ▶ Is properly attached to the nose.



ATX 04

MB001 (AD)
CPR Training Manikin Advanced (Torso)

MB001 (AD) same above but without accessories

MB001
CPR Training Manikin (Torso)

MB001 same above but without accessories



D.P. SCIENTIFIC SOLUTIONS

704, A-BLOCK, NEW TAGORE GARDEN
AMBALA CANTT - 133001 (H.R.) INDIA
E-mail : dpscientificsolutions066@gmail.com
visit us: www.dpscientificsolutions.in
contact us: 85276-76998, 79882-53107

CHILD CPR TRAINING MANIKIN FOR MASS EDUCATION

31

PB001 CHILD CPR PRACTI-BABY MANIKIN MODEL MALE MADE IN SPAIN FIRST TIME IN INDIA



PRACTI-BABY, THE LIFELIKE INFANT MANIKIN

PERFORM REALISTIC BREATHING

Practi-Baby's size, weight and movements are suitable for performing correct infant CPR, adapting to training needs.

Exclusive breathing system, including a realistic nose function.

The head tilt enables students to learn the correct breathing technique.



AUDIBLE FEEDBACK

The selector gives the option of practice sessions with or without clicking.

STABLE PRACTI-BABY

Stays firmly in position during practice sessions.

AED TRAINING

Pads do not leave residue on the skin.



THE ACTUAL PHOTOGRAPH MAY DIFFER FROM THE PICTURE SHOWN DUE TO CONSTANT IMPROVEMENT

AED TRAINER / CPR TRAINING MANIKIN (TORSO) FOR MASS EDUCATION

32

ATX-01 AED Trainer XFT-120 (IMPORTED)

Features & Functions

1. It is Completely Complainant with AHA 2005 (U.S.A.) new guidelines and pre configured with 10 training scenarios that simulate realistic sudden cardiac arrest episodes.
2. With 2 different connectors (Yellow & White) it can be used with real human body, and manikins of used separately both of these two connectors can give responses to check if the pads connections are firm or poor.
3. It includes the DC and AUDIO interfaces ,the former can connect the adapter (that's to say, XFT@AED Trainer can be operated by not only batteries but also the adapter) while the later AUDIO OUT can Connect the speakers .It's very helpful for instructors during teaching.
4. It can be set bilingual, any language is available.
5. Remote Control.



ATX 01

ATX-02 AED TRAINER XFT-120 WITH CPR TRAINING MANIKIN (TORSO) MB-001

This is a combination pack of above ATX-01 AED Trainer + MB-001 CPR Training Manikin (Torso) in a combo pack

2 extra pcs of Lungs included FREE



ATX 02



THESE ARE AED TRAINERS FOR TRAINING PURPOSE ONLY



D.P. SCIENTIFIC SOLUTIONS

704, A-BLOCK, NEW TAGORE GARDEN
AMBALA CANTT - 133001 (H.R.) INDIA
E-mail : dpscientificsolutions066@gmail.com
visit us: www.dpscientificsolutions.in
contact us: 85276-76998, 79882-53107

IMPORTED LIFE SUPPORT TRAINING MODELS (CPR)

33

XC-406-5

WHOLE BODY BASIC CPR MANIKIN (FEMALE) WITH MONITOR & PRINTER

This CPR manikin meets AHA (American Heart Association 2015 Guidelines & ECC) simulate the patient revivals through first aid by measures of heart press on the chest and mouth to mouth respiration. As soon as the patient revivals, his neck artery and heart recover pulsate continuously, his enlarged pupils shrink to normal. The model also shows the operation is correct or not by signal indication, language indication and grade printing. An ideal model for use in hospitals medicals colleges and schools.

XC-406-2

WHOLE BODY BASIC CPR MANIKIN (MALE) WITH MONITOR & PRINTER

This CPR manikin meets AHA (American Heart Association 2015 Guidelines & ECC)

The rest of the specification are same as per XC-406-5

XC-406

WHOLE BODY BASIC CPR MANIKIN (MALE) WITH MONITOR

This CPR manikin meets AHA (American Heart Association 2015 Guidelines & ECC)

The rest of the specification are same as per XC-406-5



XC-406-5



XC-406-2

XC-404A KR-190

HALF BODY CPR TRAINING MODEL (MALE)

This Model serves as ideal Training aids for teaching and Training CPR skills in Hospitals, Medical College and Schools. Function: Heart pressure and mouth to mouth respiration.



XC-404A

XC-404B

HALF BODY CPR TRAINING MODEL (FEMALE)

This Model serves as ideal Training aids for teaching and Training CPR skills in Hospitals, Medical College and Schools. Function: Heart pressure and mouth to mouth respiration.



XC-404B

XC-404 KR-15200

BASIC CPR MANIKIN (HALF BODY) WITH MONITOR

This manikin shows the half body from the head to the sixth rib of the chest. The cross-section is painted with different colors to show the different organs clearly and vivid. The cross section heart and lung show the various movements when demonstrate heart pressure and mouth to mouth respiration or mouth to nose respiration.



XC-404

WE RESERVE THE RIGHT TO SUPPLY SIMILAR MODEL OF OTHER MANUFACTURER UNLESS OTHERWISE STATED

IMPORTED NURSE TRAINING MODELS

34

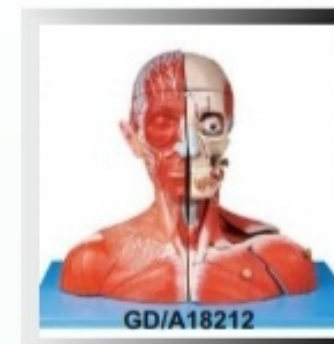
GD/A18212

New

HEAD AND NECK WITH BLOOD VESSELS, NERVES AND BRAIN MODEL

Separated into 19 parts, such as:

Mimic muscular system with the deep-set muscles
Left temporomaxillary articulation
Sternocleidomastoid muscle
Carotid trigone
Trapezium muscle
Pectoral major muscle
Deltoid muscle
Clavicle
Eyes with muscles and nerves
Cranium
Brain with arteries
Size : 34x37x20.5cm
Material: Advanced PVC



GD/A18212



GD/A18212



GD/A18212

GD/A13013

New

TRANSPARENT LUNG, TRACHEA AND BRONCHIAL TREE WITH HEART MODEL

The model consists of heart, great vessels (aorta, superior vena caval), tracheobronchial tree and mediastinum.

57 positions are displayed

Size: 2/3 time of Large size, 27x22x19cm

Material: Advanced PVC and paint

G.W.: 2.3 kg.



GD/A13013

GD/HS12

New

INTRADERMAL INJECTION ARM MODEL SIZE

64x14x10.5cm

Features 8 positions for intradermal injection

GD/HS17

New

INSULIN INJECTION PAD MODEL

The pad is made of imported plastic material with soft and elastic skin and cloth elastic can be worn on the specific site of the patient for self-injection of insulin drug. Such as: abdomen, thigh, upper arm, etc. The length and tightness can be adjusted. And the thickness of the pad is suitable for different specifications of injection syringe. The hard plate in the back would prevent wearing situation of pad.



GD/HS12



GD/HS17

ALL THE CPR'S IMPLEMENT AHA (AMERICAN HEART ASSOCIATION) 2015 GUIDELINES FOR CPR & ECC



D.P. SCIENTIFIC SOLUTIONS

704, A-BLOCK, NEW TAGORE GARDEN
AMBALA CANTT - 133001 (H.R.) INDIA
E-mail : dpscientificsolutions066@gmail.com
visit us: www.dpscientificsolutions.in
contact us: 85276-76998, 79882-53107

IMPORTED LIFE SUPPORT TRAINING MODELS

35

GD/F55 Advanced Delivery & Maternal & Neonatal Emergency Simulator : Automatic Birthing System, Simulates Real Delivery Process with CPR of Pregnant Women

Advanced Delivery and Maternal and Neonatal Emergency Simulator is a comprehensive education system, which consists of a delivery maternal manikin and a normal newborn, according to the basic requirement of obstetrics, providing a complete birth experience and emergency skills operation. Simulator features includes automatic delivery system, fetus and placental expulsion, prenatal cervix examination and postpartum episiotomy, prenatal gravida and fetus and postpartum maternal and neonatal care, removable stomach cover, multiple fetal heart sounds auscultation and CPR operation etc. The Model is made of High Quality PVC Material. The stomach wall is injection – molded. Perineum is made of sponge emulsion material, features soft texture, good flexibility, realistic operation, reasonable structure and durability. It is one of the ideal teaching aids for clinical obstetrics practice Training.

Product Features:-

- 1) Advanced Delivery maternal manikin can practice Maternal Care.
- 2) Life-Size Maternity, soft and removable stomach cover can be replaced for a auscultation stomach cover and c-section stomach cover.
- 3) Maternal Tracheal Intubation.
- 4) **Automatic Birthing System To Simulate The Entire Birthing Process.**
This Model Simulate's Normal Delivery process via occiput right interior position; demonstrate engagement – descent –M flexion – inner rotation – extension – reset and external rotation – fetal shoulder expulsion etc. This model can also simulate difficult labor and midwifery course. Simulate normal and abnormal fetal position (Head Birth and Breech Delivery).
- 5) Can carry out Multiple Fetal Heart Sound Auscultation
- 6) Provides Prenatal Cervix Examination; Simulate 6 Stages of Cervical Dilation
- 7) Can Measure Fetal Head Descent and Cervical Dilation.
- 8) Simulate Normal Placenta location, multiple placenta locations and placenta chips residue
- 9) Vulval incision and suturing modules can be inserted into perineum to practice perineotomy, suturing and wound nursing after perineotomy.
- 10) Postpartum Uterine bleeding and Fundal massage.
- 11) Venous Injection on maternal Arm, Drug Treatment and liquid infusion.
- 12) Maternal carotid artery pulse.
- 13) Maternal blood pressure measurement.
- 14) Maternal CPR.
- 15) Articulating Normal Birthing Baby with umbilical cord and normal placenta, life size. Can practice umbilical cord ligation and placental expulsion.
- 16) Neonatal transfusion simulator, providing Newborn Baby Nursing, Tracheal intubation, Venous Injection.

GD/F55



WE RESERVE THE RIGHT TO SUPPLY SIMILAR MODEL OF OTHER MANUFACTURER UNLESS OTHERWISE STATED

IMPORTED NURSE TRAINING MODELS

36



GD/H220B ADVANCED ELDERLY FULLY-FUNCTIONAL NURSING MANIKIN (FEMALE)

GD/H220A ADVANCED ELDERLY FULLY-FUNCTIONAL NURSING MANIKIN (MALE)

Multi-functional Old Female Lifelike Manikin.
Specifically Designed For Professional Nursing Training.
High Quality Manikin Provides Wide Range Of Exercise
Possible Including Both First And Emergency Situation.

NURSING SKILL:

1. Hair and Face Washing
2. Pupil Observation, Bilateral Pupil States: Normal, Mydriasis
3. Eye and Ear Washing and Administering
4. Removal and Insertion of Hearing Aid
5. Oral Cavity and Artificial Teeth Care
6. Endotracheal Intubation, Automatically Monitor Weather The Tracheal Intubation Is Correct Or Not Through Sensor, Support Auscultation to Detect Intubation Site.
7. Incision Of Trachea Nursing
8. Sputum Suction
9. Oxygen Inhaling
10. Oral and Nasal Feeding
11. Gastric Lavage
12. Venipuncture, Injection, Transfusion (Arm)
13. Deltoid Subcutaneous Injection
14. Thoracic Cavity, Abdominal Cavity, Liver, Bone, Marrow and Lumbar Puncture
15. Breast Nursing, Mammary Gland Examination
16. Enema

17. Female Urethral Catheterization
18. Female Bladder Irrigation
19. Stoma Drainage
20. Colostomy
21. Buttocks Intramuscular Injection
22. Large Area Of Sacral Ulcer
23. Cancer Tumor Contrast
24. Cleavage Lines Contrast
25. Holistic Nursing: Sponge Bath, Replacing Clothes Cold and Hot Therapy
26. Realistic Limbs Joint, Stiff Simulative Joints
27. Truck May Lean Forward, Can Sit It The Wheelchair
 - a. Truck-Rotation, Flexibility
 - b. Neck-Rotation, Flexibility, Lateral Crvature
 - c. Shoulder and Buttock-Endoduction, Abduction, Rotation, Flexibility
 - d. Elbow-Internal Rotation, External Rotation,
 - e. Knee-Internal Rotation, External Rotation
 - f. Wrist-Internal Rotation, Flexibility, Stretching, Bending
 - g. Ankle-Introversion, Eversion Endoduction, Abduction
28. Non-Invasive Blood Pressure Measurement
 - a. Systolic and Diastolic Pressure May Be Set Individually In Steps Of 1 MM Hg.
 - b. Systolic Pressure 0-300MM Hg, Diastolic Pressure 0-300Hg
 - c. Korotkoff Sound Volume In Ten Steps, 0-9

This Manikin helps nursing students to understand old age people while nursing.

PEA 3330-1 DIGESTIVE SYSTEM

This natural size model shows the complete digestive the mouth cavity to the rectum. The mouth cavity, the pharynx and the first tract of the esophagus are dissected along the medial sagittal plane. The liver shown together with the gall bladder and the pancreas is dissected to expose the inner structures. The stomach is open along the frontal plane, the duodenum, the secum, part of small intestine and the rectum are open to expose the inner structure. The transverse colon is removable.
Size: 80x30x6

PEA 3332 BLOOD CIRCULATION SYSTEM

An exceptional representation of the vascular system the model shows basic human skeletal structure as well, so students can understand how it related to blood circulation. It also feature the hear, lungs, liver, spleen, and kidneys. The model is mounted on a base. Size (cm): 80x30x6



WE RESERVE THE RIGHT TO SUPPLY SIMILAR MODEL OF OTHER MANUFACTURER UNLESS OTHERWISE STATED

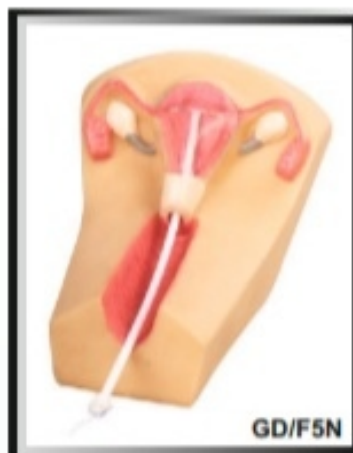


D.P. SCIENTIFIC SOLUTIONS

704, A-BLOCK, NEW TAGORE GARDEN
AMBALA CANTT - 133001 (H.R.) INDIA
E-mail : dpscientificsolutions066@gmail.com
visit us: www.dpscientificsolutions.in
contact us: 85276-76998, 79882-53107

IMPORTED NURSE TRAINING MODELS

37

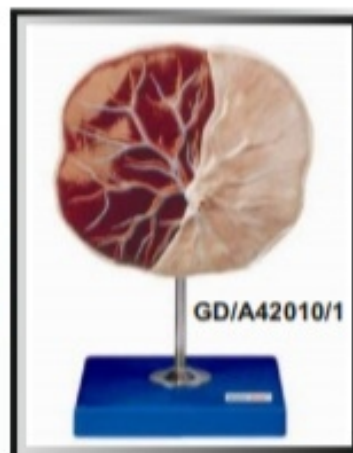


GD/F5N IUD TRAINING MODEL

- Basing on real anatomy of female genitalia, we designed this model for instructing or training of insertion or removal IUD.
- The uterus is in coronal section and covered with transparent plastic window. So students can directly observe the entire insertion or removal process.

GD/A42010/1 HUMAN PLACENTA MODEL

- Mounted on stand
- Made of Advanced PVC
- Shows the Structure of placenta and the relation between placenta and umbilical cord
- 7 Positions are displayed



GD/H120A ADVANCED NURSING & WOUND CARE MANIKIN (MALE)

GD/H120B ADVANCED NURSING & WOUND CARE MANIKIN (FEMALE)

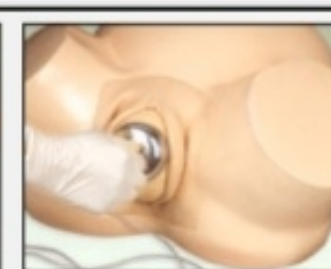
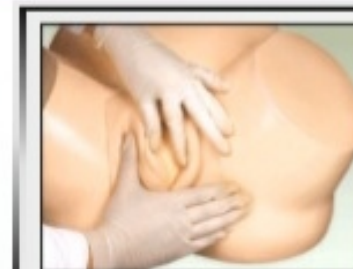
Full Body Lifelike UNISEX Manikin. Specifically Designed For Professional Nursing Training. High Quality Manikin Provides Wide Range of Exercise Possible Including Both First And Emergency Situation.

NURSING SKILL:

- | | |
|---|---|
| 1. Hair and Face Washing, Hair Combing | 14. Enema |
| 2. Eye and Ear Washing and Administering | 15. Female Urethral Catheterization |
| 3. Mouth Cavity and Artificial Teeth Care | 16. Male Urethral Catheterization |
| 4. Endotracheal Intubation | 17. Female Bladder Irrigation |
| 5. Sputum Suction | 18. Male Bladder Irrigation |
| 6. Oxygen Inhaling | 19. Ostomy |
| 7. Oral and Nasal Feeding | 20. Buttocks Intramuscular Injection |
| 8. Gastrolavage | 21. Main Organs In Abdominal Cavity |
| 9. Main Organs In Thoracic Cavity | 22. Holistic Nursing Care: Sponge Bath, Replacing Clothes |
| 10. Venipuncture, Injection, Blood Transfusion (Arm) | 23. Limbs Joints: Bend, Rotation and Upper Or Lower Movement |
| 11. Deltoid Subcutaneous Injection | 24. Trauma Evaluation and Care: Washing, Disinfection, Enswathing Of The Wound; Hemostasis and bandaging. |
| 12. Vastus Lateralis Injection | |
| 13. Thoracic Cavity, Abdominal Cavity, Liver, Bone Marrow and Lumbar Puncture | |

IMPORTED NURSE TRAINING MODELS

38



GD/F8

MIDWIFERY TRAINING SIMULATOR

1. This simulator can help to demonstrate all the process of delivery.
2. The life-size pelvic cavity has main anatomical structures.
3. it can help train the skills of Delivery.

GD/H130

ADVANCED NURSING BABY UNISEX

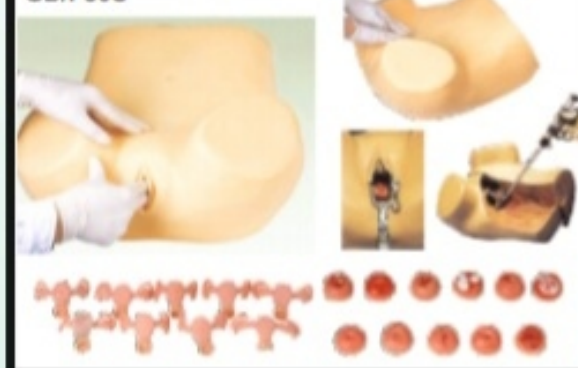
Specifically Designed for Professional Nursing Training. High Quality manikin provides wide range of exercises possible including both first aid and emergency situations.

NURSING SKILLS:

1. Head Neck and Limbs Can Be Moved Freely.
2. The Chest Skin Can Be Replaced
3. Cephalic Venipuncture
4. Umbilical Venipuncture
5. Oral and Nasal Intubation Nursing
6. Care Of Gastrolavage, Enema and Urethral Catheterization
7. Ostomy
8. Deltoid Subcutaneous Injection and Buttocks Intramuscular Injection
9. Holistic Nursing Care: Sponge Bath, Replacing Clothes, Lactation and Diaper Changing



GD/F30S

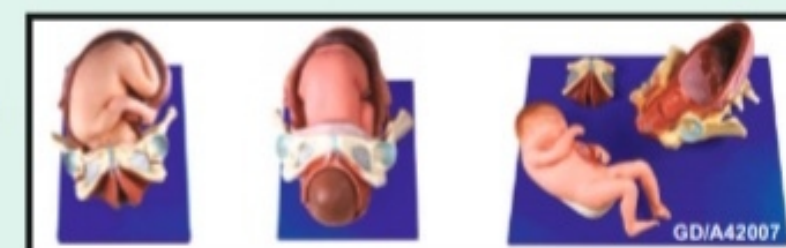


GD/F30S

GYNECOLOGICAL EXAMINATION MODEL

This Gynecological Training Model is specifically designed for professional training. The various functions of this model are as follow:

1. Palpation of normal and pregnant uterus.
 2. Bi-manual pelvic tri-manual pelvic examination.
 3. Vaginal examination.
 4. Visual recognition of normal and abnormal cervixes.
 5. Contraceptive sponge insertion and removal.
- Observation of uterus, ovary, fallopain tubes and ligament teres.



GD/A42007

DEMONSTRATION MODEL OF CHILD BIRTH

1. This Model Shows the Delivery procedure
2. Consists of Uterus, Fetus, Placenta



D.P. SCIENTIFIC SOLUTIONS

704, A-BLOCK, NEW TAGORE GARDEN
AMBALA CANTT - 133001 (H.R.) INDIA
E-mail : dpscientificsolutions066@gmail.com
visit us: www.dpscientificsolutions.in
contact us: 85276-76998, 79882-53107

IMPORTED NURSE TRAINING MODELS

39

GD/F20

CHILD BIRTH SKILL TRAINING SIMULATOR

This model consists of pelvic, fetus (with umbilical cord and placenta), cervix check model (cervix change of antepartum) perineum cutting, and suturing training simulator and etc. with lifelike shape, cervix check and childbirth procedure can be operated. Trainees can simulate proper childbirth procedure, assist delivery, perineum protecting, and episiotomy.

Features:

- Cervix check model: Size of cervical ora, effacement of cervical canal and the position of fetal head corresponding to the plane of ischial can be checked.
- Fetus model: The skin is soft and fontanel is visible. Vacuum extraction, umbilical cord ligation, and placenta expulsion can be exercised.
- Childbirth model: The model consists of transparent abdominal wall and lifelike skin. Simulate normal or difficult labors, assist delivery, and perineum protecting.
- Perineum cutting and suturing training simulator: The simulator can be used repeatedly. One set of the simulator consists of three components; separately simulate the right posterior, left posterior incision or median incision.

GD/F35

ADVANCED GYNECOLOGICAL TRAINING SIMULATOR

Features:

- It is including all the functions of GD/F30S.
- Hysteroscopy checking
- Laparoscopic visualization checking, can observe the Uterus, accessories, round ligament, uterine and other structures
- It can place the female condoms, contraceptive sponge, cervical cap and other contraceptives.
- Cervix, uterus can be replaced

Components:

- The normal and abnormal uterus and accessories model can be bimanual and triple diagnosis checking
- Normal uterus and accessories (the front uterus wall is transparent, so the IDU can be placed and took out.)
- Normal uterus and accessories
- Uterus associated with significant flexion, forward.
- Uterus associated with significant back flexion, back forward.
- Uterus associated with right ovarian cysts tubal
- Uterus associated with right tubal cyst.
- Uterus associated with right hydrosalpinx
- Uterine fibroids
- Uterine inflammation associated with the right accessories
- Uterine malformations.
- Normal and abnormal cervix model (It is used for checking the parts by gynecatoptron)
- Normal cervix
- Chronic cervicitis
- Acute cervicitis

- Cervical cyst
- Inflammation Bohnert
- Cervical polyps
- Cervical adenoma
- Normal uterus
- Endometrial polyps
- Endometrial hyperplasia
- Uterine fibroids
- Early uterine body cancer
- Advanced uterine body cancer
- End uterine cancer
- Pregnant uterus model
- 6-8 week of pregnancy the uterus
- 10-12 week of pregnancy the uterus
- 20 weeks week of pregnancy the uterus
- Simulation of post partum 48 hour uterus
- The process of placing and taking out the IDU



GD/F20



GD/F35

40

IMPORTED NURSE TRAINING MODELS

GD/F7A

BREAST EXAMINATION MODEL

1. Palpation of galactophore malignant tumor, Innocent tumor, lymphaden and lobulus accrementation.
2. In Imported thermoplastic.
3. Lifelike shape, skinny, pleasant to touch and durable.
4. Ametabolic under disinfections and cleanout, convenient delivery.



GD/F7A



GD/FW2

MATERNITY EXAMINATION MODEL

Specifically designed for professional training. The various functions of this model are as following:-

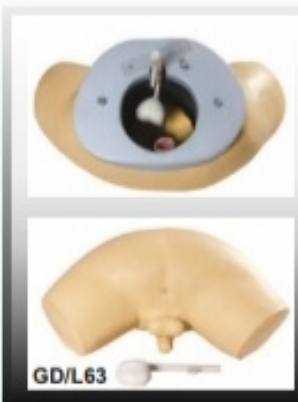
1. Palpation, embryo heart sound auscultation, pelvic measurement and mammary nursing training.
2. Inflating uterus through ball to make model to lifelike. Adjustable heart sound speed, volume.
3. Heart sound can be heard not only from stethoscope but also from microphone of front board of model.

GD/L63

PROSTATE INSPECTION MODEL

This model provides prostates with tumors in 4 different development periods.

- The 1st development: Begin, slightly enlarged, but normal prostate gland simulates benign stage.
- The 2nd development: Some hard tubers can be observed in the top right quadrant of prostate. It's the beginning of the tumor.
- The 3rd development: Prostate with easily palpable large mass simulate intermediate stage. The small module has increased is size and has become an external hard mass on the surface of the gland.
- The 4th development: Prostate with malignant invasive cancer simulate terminal stage. This gland is totally replaced with carcinoma. The entire gland will feel hard and irregular.

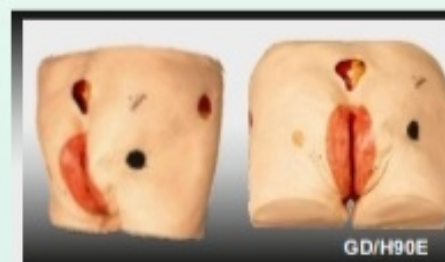


GD/L63

GD/H70-1

NASOGASTRIC FEEDING & TRACHEAL INTUBATION SIMULATOR

Hair and Face Washing, Eye and Ear Washing and administering Mouth Cavity Care, Endotracheal Intubation Oxygen Inhaling, Nasogastric Intubation Sputum Suction, Oral and Nasal Cavity Intubation & Carotid Artery Pulse



GD/H90E

GD/H90E

DECUBITUS ULCER CARE SIMULATOR

4 Stages of Ulceration. Decubitus ulcer kinds: sinus, fistula, corruption scab, infection, bone exposure, eschar, suturing incision, Herpes and Monilia infection. Incision washing, evaluation and measurement



GD/H70-1

THESE MODELS ARE MUST FOR EVERY NURSING SCHOOL & MEDICAL COLLEGE

PLEASE ASK US FOR CERTIFICATE OF AUTHORIZED DISTRIBUTORSHIP

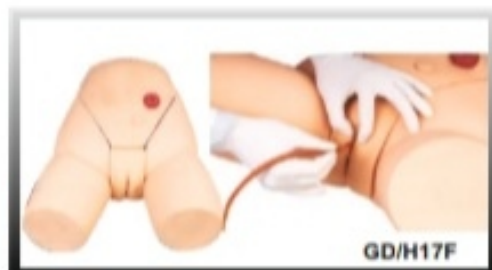


D.P. SCIENTIFIC SOLUTIONS

704, A-BLOCK, NEW TAGORE GARDEN
AMBALA CANTT - 133001 (H.R.) INDIA
E-mail : dpscificsolutions066@gmail.com
visit us: www.dpscificsolutions.in
contact us: 85276-76998, 79882-53107

IMPORTED NURSE TRAINING MODELS

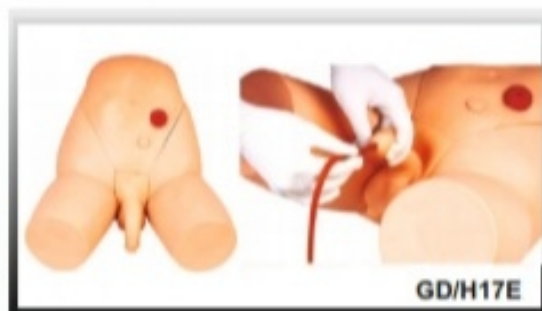
41



GD/H17F

FEMALE CATHETERIZATION TRAINING SIMULATOR

- General urethral catheterization process can be operated.
- There are resistance when advance the catheter through urethral sphincter. Features same as GD/H17F.



GD/H17E

GD/H17E

MALE CATHETERIZATION TRAINING SIMULATOR

- General urethral catheterization process can be operated.
- General urethral catheterization process can be operated.
- There are resistance when advance the catheter through mucosal fold, bulb of urethra and intraurethral sphincter. Features same as GD/H17E.

GD/F20G

LABOUR DELIVERY MODEL

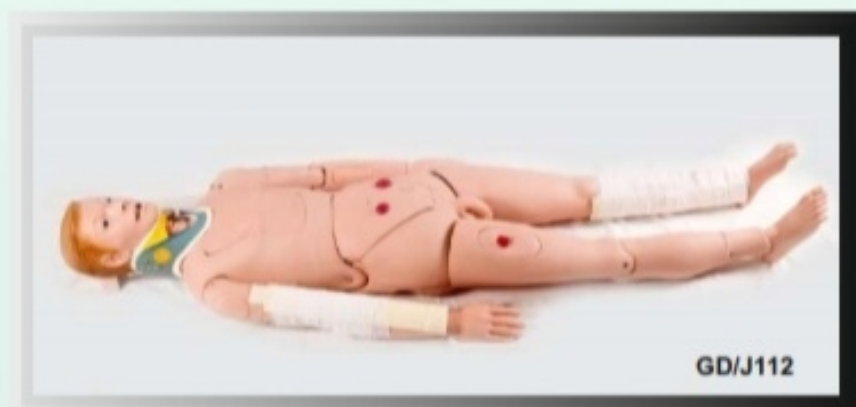
- This Model consists of six development phases and each part shows a state of prenatal cervix and birth canal. The whole model demonstrates the relations between the scope of expanding of the orifice of cervix and the range of cervical tunnels, as well as the relation between the position of the head of fetus and the square of ischial spine.
- 1": The orifice of cervix has no expanding and the cervical tunnels haven't disappeared at all. The positional relation between the head of fetus and the square of ischial spine is -5.
- 2": The orifice of cervix has expanded 2cm bigger and cervical tunnel disappear 50%. The positional relation between head of fetus and the square of ischial spine is -4.
- 3": The orifice of cervix has expanded 4cm bigger and the cervical tunnels disappear absolutely. The positional relations between the head of fetus and the square of ischial spine is -3.
- 4": The orifice and cervix has expanded 5cm bigger and the cervical tunnels disappear absolutely. The positional relation between the head of the fetus and the square of ischial spine is 0.



GD/F20G

GD/J112 **New**

STANDARD PATIENT FOR EXTERNAL FIXATION TRAINING SIMULATION IN FIRST AID OF LIMB FRACTURE



GD/J112

Made of imported silicone rubber material after injection molding. Can simulate trauma of head and limbs closed fracture. Can help students understand fracture symptoms such as deformity, bone fricative and abnormal movements and carry out diagnosis and treatment. Can help the trainee master clearing, disinfection, binding up, fracture reduction and fixation and handling operation of fracture trauma in practice. Has great clinical significance in surgical trauma emergency skill training. Vivid fracture trauma simulation. Modular accessories can be replaced conveniently. One of ideal products for surgical trauma emergency rescue skills training.

Suitable for practice training in medical colleges, nursing colleges and training teaching in clinical popularization among primary level health departments.

FOR PRICE OF ALL THE MODEL, PLEASE SEE PRICE LIST ENCLOSED OR ASK FOR THE PRICE LIST

42

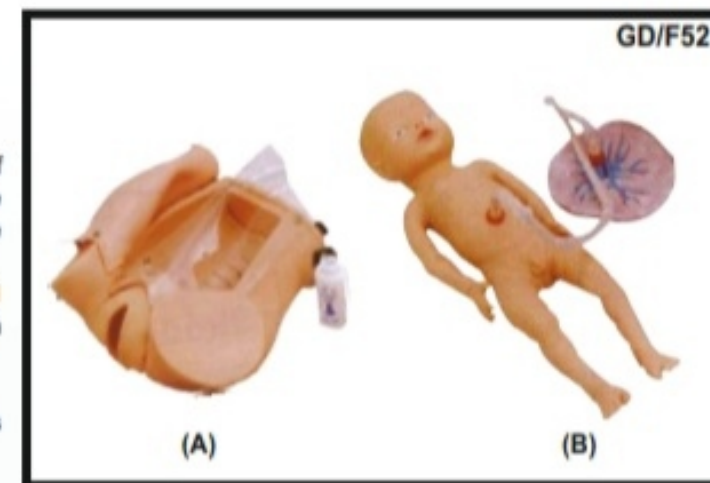
IMPORTED NURSE TRAINING MODELS

GD/F52

ADVANCED DELIVERY MECHANISM DEMONSTRATION SIMULATOR

Features:

- Demonstrate the whole process of delivery.
- Demonstrate the fetus, umbilical cord and placenta of vacuum-assisted delivery, flexible fetal joint and multiple normal and abnormal positions of fetal delivery can be showed.
- Can practice and master the comprehensive skills of normal labor, abnormal labor (dystocia), midwifery, and perineum protection.
- Available Training of multiple pregnancy (twin pregnancy).
- Component: A (Matrix for delivery Demonstration) + B (Fetus for Demonstration).



GD/F52

(A)

(B)



GD/A42002

GD/A42002

HUMAN FERTILIZATION AND EARLY EMBRYOLOGY MODEL

Shows the development from ovum to the fetus in third month.
16 positions are displayed.
Material: Advanced PVC

GD/A42001

FERTILIZATION PROCESS SIMULATOR

Shows two frontal sections through female genital organs. Mounted on a board. 25 Positions are displayed.



GD/A42001

GD/F9G **New**

VASOLIGATION TRAINING SIMULATOR



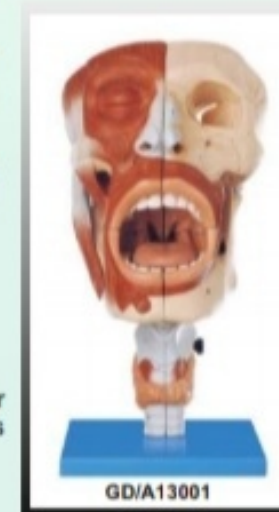
GD/F9G

Accurate anatomic structure. Can touch the vas deferens on the upper end of the testis. Training practice can be done in the classic way to cut off or ligate the vas deferens to block the output of sperm and ensure sterilization. Training practice can also be done as per new technology: No scalpel vasectomy (NSV), to block the output of sperm and ensure sterilization. Provide easily replaceable genital parts (including two pieces of testis and mobile scrotal skin and two pieces of vas deferens. Can be used repeatedly in training practice.

GD/A13001 **New**

NASAL, ORAL, PHARYNX AND LARYNX CAVITIES MODEL

A model of the respiratory system, including the oral, nasal cavities, pharynx and larynx. The upper respiratory tract is dissected into two pieces along the medial sagittal plane Ten parts and 113 positions are displayed Size: Two times of Life size, 42x25x20.5cm
Material: PVC and paint
G.W. : 5.5 kg.



GD/A13001

THE ACTUAL PHOTOGRAPH MAY DIFFER FROM THE PICTURE SHOWN DUE TO CONSTANT IMPROVEMENT



D.P. SCIENTIFIC SOLUTIONS

704, A-BLOCK, NEW TAGORE GARDEN
AMBALA CANTT - 133001 (H.R.) INDIA
E-mail : dpscientificsolutions066@gmail.com
visit us: www.dpscientificsolutions.in
contact us: 85276-76998, 79882-53107

IMPORTED NURSE TRAINING MODELS

43

GD/FT333

ADVANCED MULTI-FUNCTIONAL CHILD NURSING MANIKIN (UNISEX)

Designed according to the anatomical characteristics of child, and specializing in child care training. The skin is soft and flexible, not easily deformed, realistic shape lovely appearance, and clear internal anatomical structure. Good help for pediatric nursing teaching and training.

NURSING SKILLS:

1. Pupil observation. Bilateral Pupil states: normal, mydriasis.
2. Operations of child care: full body bandage exercise, bathing, changing clothes, hair combing, eye washing and administering, otic drops and irrigation, mouth cavity care, blood collection of finger and TB test.
3. Airway administering: realistic mouth, nose, tongue, gum, pharynx, larynx, esophagus, epiglottis, trachea and tracheal ring, can practice tracheal intubation, sputum suction, oxygen inhaling.
4. Oral and nasal feeding
5. Gastroirrigation
6. Venipuncture, injection, transfusion (arm). When needle penetrates into vein Blood flash back indicates proper insertion.
7. Intramuscular injection in bilateral deltoid, bilateral vastus lateralis and bilateral buttock
8. Enema, placement of rectal supposition
9. Urethral catheterization
10. Holistic care: sponge bath, replacing clothes, cold and heat therapy
11. Limbs joints: Bend, rotation, upper and lower movement.



GD/FT333

GD/FT335

ADVANCED FULL FUNCTIONAL NEONATAL NURSING & CPR MANIKIN

1. General care: change diapers, change clothes, mouth care, cold and hot therapy, bandaging;
2. Venous transfusion/puncture, arm veins include and Scalp vein includes.
3. Umbilical cord care: ligature of umbilical cord, umbilical venous intubation and transfusion;
4. Gastric intubation: detect tube position by means of auscultation; can practice gastrointestinal decompression, nasal feeding, gastric lavage, etc;
5. Bone marrow puncture: practice tibial puncture; outflow of simulative bone marrow shows proper puncture operation; drug liquid can be injected into and can practice transfusion operation;



GD/FT335

GD/FT336

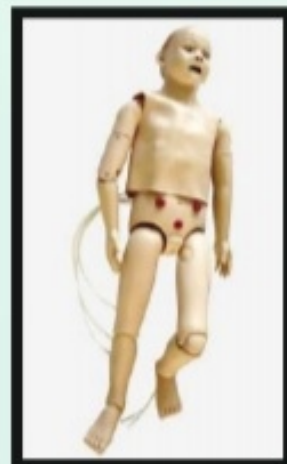
ADVANCED EMBRYO DEVELOPMENT PROCESS SIMULATOR

Be placed in the beautiful rigid box, divided into 9 different process of embryo development.

Videos vividly describe the embryonic development, the magical process of embryonic growth and reveal the mysteries of life.



GD/FT336



GD/FT334 New

FULL-FUNCTIONAL FIVE YEARS-OLD CHILD NURSING MODEL (NURSING, CPR)

General Care: Skin care (e.g.: wear and change clothes), mouth care, ear irrigation, bandaging training, changing diapers, cold and hot therapy; Venous puncture/transfusion: dorsal vein of hand femoral vein, dorsal vein of foot intramuscular injection: bilateral deltoid, bilateral vastus lateralis Subcutaneous Injection: the subcutaneous of lateral thigh Bone marrow puncture: distinct body marks; practice tibial puncture; outflow of simulative bone marrow shows proper puncture operation.

Gastric intubation: detect tube position by means of abdominal auscultation; can practice gastrointestinal decompression, gastric lavage, etc; aspiration of gastric fluid indicates proper intubation; Urethral catheterization: replaceable male/female perineum, practice male/female urethral catheterization. Leum, rectum, bladder stoma care CPR operation training: Support multiple ventilation ways: mouth to mouth mouth to nose, BVM to mouth; electronic monitoring of inflation frequency, volume, compression number, frequency and depth; can only practice inflation or compression. Auscultation: the heart sound, the breathing sound, the bowel sound.

Defibrillating and pacing: simulating the defibrillation and pacing, can be used with different real defibrillator and pacemaker to achieve the real defibrillation and pacing.

ECG: simulating ECG, can be used with different real ECG to achieve the real ECG.

IMPORTED NURSE TRAINING MODEL

44

GD/AED99D+

AED SIMULATOR AND CPR MANIKIN SET

This manikin is suitable for BLS (Basic Life Support) and AED (Automated External Defibrillator) training.

1. Opening or closing the cover will turn on AED instrument.
2. Simulate first-aid procedure: GD/AED99D (only for training use) has not high tension shock motion.
3. Automatically check the position of electrode pad.
4. There are 9 internal scripts, simulating different conditions.
5. Simulate: touch the patient's body when conducting AED; the position of electrode pad is wrong or right; it is need to defibrillate or not; machine has trouble; the electricity is low
6. Electricity management function: The system automatically checks the batteries electricity. When the electricity is low, there will be sound indicating. During the interval of two times, system will enter saving power mode. If there isn't operation in 3 minutes, system will enter waiting mode.
7. Lithium battery

Features of half-body CPR manikin:

1. Simulate airway opening
2. External breast compression: sound prompting
3. Artificial respiration: observe the fluctuation of chest (Inhalation standard: =500/600ml-100ml=)
4. Operation frequency: 100 times per minute (the latest international standard)
5. Operation mode: exercise mode



GD/AED99D+

GD/J140

BABY OBSTRUCTION/INFANT C.P.R. SIMULATOR

Full-body lifelike baby specifically designed for professional training of Heimlich manoeuvre, foreign-body airway obstruction feature provide a realistic condition for releasing of a foreign body obstruction through back blows and chest thrust techniques



GD/J140

GD/F9E

IUD TRAINING SIMULATOR

Feature:

The model accurately show uterine lateral section, with transparent membrane covering on the model, can clearly observe IUD insertion and placement process.



GD/F9E

GD/F9F

IUD TRAINING SIMULATOR

Feature:

The model accurately show uterine lateral section and internal structure of the internal genital clearly observe IUD insertion and placement process.



GD/F9F

FOR PRICES OF ALL THE MODELS, PLEASE SEE ENCLOSURE OR ASK FOR THE PRICE LIST

ALL THE ABOVE MODELS ARE MADE OF SOFT AND HALF HARD PVC PLASTIC MATERIAL



D.P. SCIENTIFIC SOLUTIONS

704, A-BLOCK, NEW TAGORE GARDEN
AMBALA CANTT - 133001 (H.R.) INDIA
E-mail : dpscientificsolutions066@gmail.com
visit us: www.dpscientificsolutions.in
contact us: 85276-76998, 79882-53107

IMPORTED LIFE SUPPORT TRAINING MODELS

45



GD/J110

ADVANCED TRAUMA CARE MANIKIN

Full-Body Life Like Male Manikin
Specially Designed for Professional Trauma Nursing Care
High Quality Manikin provides wide range of exercises
Trauma Nursing Skills :-

1. Bed Bathes, Dressing and Undressing
2. Hair Washing
3. Face Washing
4. Irrigation of the Eyes and Ears
5. Oral Cavity Care
6. Oxygen Inhalation
7. Nasal Feeding
8. Lavage
9. Oral Cavity Intubations
10. Nasal Cavity Intubations
11. Tracheotomy Care
12. Organs Structure of Thorax
13. Venipuncture and Injection, Transfusion
14. Deltoid Injection
15. Male Urethral Catheterization
16. Female Urethral Catheterization
17. Gluteus Injection
18. Ostomy Irrigation
19. Organs Structure of Addominal Cavity

Trauma Evaluating Modules:-

1. Facial Burns : 1st, 2nd and 3rd Degree
2. Laceration in Forehead
3. The Wound in Jaw
4. Opened Clavicular Fracture and Contusion Wound on the Chest
5. The Wound in Abdomen with Small Intension Evisceration
6. Opened Humerus Fracture of Right Upper Arm
7. Opened Fracture of Right Upper Hand (Including Parenchyma Laceration, Fracture and Bone Tissue Exposure)
8. Gun Wound in the Right Palm
9. Opened Fracture of Right Thighbone
10. Compound Femur Fracture of Left Thigh
11. Metal Pricking Wound in Right Thigh
12. Opened Tibia Fracture of Right Leg
13. Opened Fracture of Right Foot with Truncating Trauma on Small Phalanx
14. Burns in Left Fore Arm : 1st, 2nd and 3rd Degree
15. Truncating Trauma on Left Thigh
16. Closed Tibia Fracture of Right Leg and Confusion Wounds in Left Ankle and Foot



GD/J5S

GD/J5S

ELECTRONIC TRACHEA INTUBATION MODEL

- Accurate anatomical marks
- Oral or nasal cavity intubation
- Wrong operation, stomach inflation or laryngoscope compressing the teeth will activate warning prompting
- One proper pupil and another mydriasis

IMPORTED NURSE TRAINING MODELS

46

GD/J158-C CPR and Intubation Training Manikin (Adult) with Monitor

Implement standard: AHA (American Heart Association) 2015 guideline for CPR and ECC



GD/J158-C

The model is adult upper body with clear anatomical landmarks (costal arch, xiphoid), easy to operate positioning. The facial skin, neck skin, chest skin, hair are all made of imported thermoplastic elastomer mixed plastic material made of stainless steel mold, the injection molding machine injection pressure from high temperature. It has realistic touch feeling, unified color, realistic shape, nice appearance, high durability, easy disassembly and replacement features.

Features:

1. Pupil response: Bilateral pupils contrast observation;
2. Carotid artery response: pinching pressure the ball to simulate carotid pulse;
3. Chest compressions;
4. Standard airway open;
5. Feasible three ways to open the airway: lift jaw with head back, lift the head and neck, lift jaw by hands;
6. Mouth resuscitation and ventilator-assisted breathing, effective artificial respiration has visible chest rise;
7. Simulate laryngeal mask airway and composite cannula can be inserted into the air way;
8. Verify endotracheal intubation is correct or not: a catheter inserted into the trachea, lungs will swell (plastic bladder) when inflated; If the catheter is inserted by mistake esophagus, stomach will swell when inflated (plastic pouch). Observed pulmonary respiration;
9. Artificial ventilation;
10. Oral or nasal intubation and esophageal intubation;
11. Open the air way and practise from resuscitator bag to breathing mask or from resuscitator bag to the cannula;
12. Respiratory tract is simple and can be replaced;
13. Easy to carry, suitable for field training.



D.P. SCIENTIFIC SOLUTIONS

704, A-BLOCK, NEW TAGORE GARDEN
AMBALA CANTT - 133001 (H.R.) INDIA
E-mail : dpscientificsolutions066@gmail.com
visit us: www.dpscientificsolutions.in
contact us: 85276-76998, 79882-53107

IMPORTED NURSE TRAINING MODELS

47

GD/F54

ADVANCED ABDOMINAL PALPATION & DELIVERY MECHANISM INTEGRATED SIMULATOR

Features:

- Demonstrate the fetus, umbilical cord and placenta of vacuum-assisted delivery, flexible fetal joint, and multiple normal and abnormal positions of fetal delivery can be showed.
- Equipped with manual delivery mechanical parts; by manual, the whole delivery process, including engagement, descending, flexion, internal rotation, extension, restoration, external rotation and fetal delivery, can be showed.
- Can practice and master the comprehensive skills of normal labor, abnormal labor (dystocia), midwifery and perineum protection.
- Equipped with soft elevated cushion for Leopold Maneuver practice.
- Equipped with models for cervical and vaginal examination practice before and at birth.



New PEA-1553A

Relief model of human excretory system
size: 62x42cm



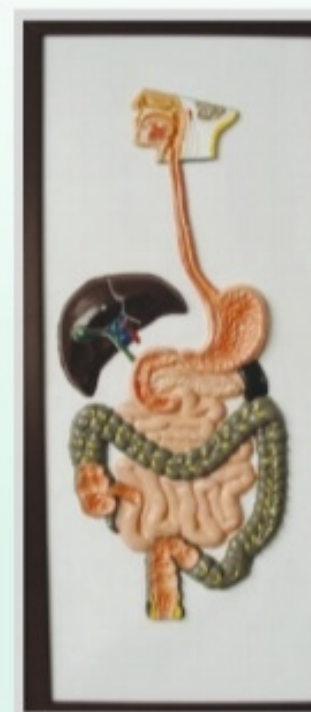
New PEA-1551A

Relief model of respiratory system
size: 62x42cm



New PEA-1651

Relief model of blood circulation
size: 62x42cm



New PEA-1552A

Relief model of human digestive system
size: 62x42cm

WE RESERVE THE RIGHT TO SUPPLY SIMILAR MODEL OF OTHER MANUFACTURER UNLESS OTHERWISE STATED

IMPORTED NURSE TRAINING MODELS

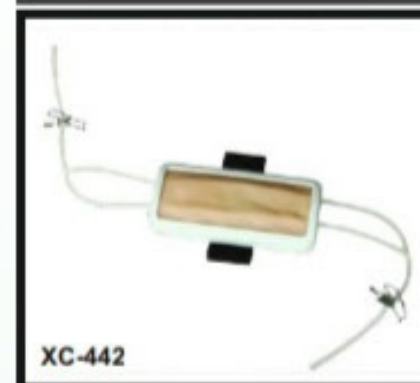
48



XC-417

CONTRACEPTION GUIDANCE MODEL

This model shows the anatomical section of female genitals. It can be demonstrated to put the pessary, how to put contraceptive medicine membrane or table, how to put in a take out the IUD and how to make induced abortion etc.



XC-442

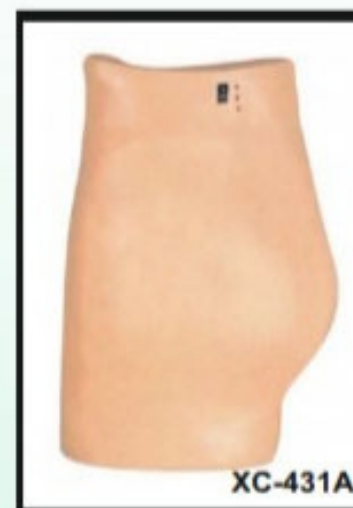
IV INJECTION PAD

This portable model can be used for injection, blood transfusion and hemospasia training. The skin and blood vessels can be easily replaced.

XC-441A

ELECTRONIC IV TRAINING HAND

This model includes mainly vein used for IV injection, blood transfusion and other puncture practices. Alarm system included.



XC-442A

SUTURE PRACTICE PAD

This portable model can be used for suture practice. Skin can be easily replaced.

XC-431A

ELECTRONIC BUTTOCKS INJECTION SIMULATOR

This model based on the normal human anatomy. For students to wear, surface is very similar to a real body. Simulated injection liquid can be injected into it when inject on the correct area. Alarm system included.



XC-442A



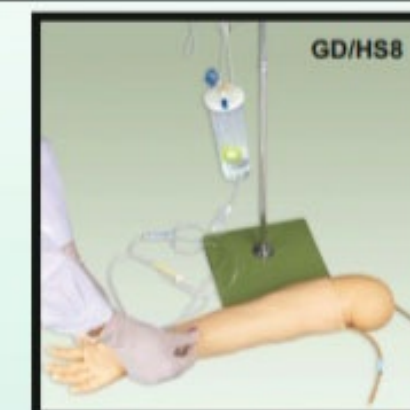
GD/HS7

GD/HS7

ADVANCED BLOOD PRESSURE TRAINING ARM MODEL

Features

This Adult Blood Pressure Training Arm lifelike model is designed for training students of Medical colleges, Nursing colleges, Health schools and clinic workers to teach and exercise blood pressure skills. This is a versatile training tool developed to assist health professionals teach the processes and skills required to perform blood pressure auscultation procedures.



GD/HS8

GD/HS8

MULTIFUNCTIONAL CHILD IV TRAINING ARM MODEL

This lifelike child vein puncture and injection training arm has all vena of the vascular system of the arm, it helps to provide a good training of injection, infusion and phlebotomization. This model can provide real life like feel when the students practice on this model.

FOR PRICE OF ALL THE MODEL, PLEASE SEE PRICE LIST ENCLOSED OR ASK FOR THE PRICE LIST



D.P. SCIENTIFIC SOLUTIONS

704, A-BLOCK, NEW TAGORE GARDEN
AMBALA CANTT - 133001 (H.R.) INDIA
E-mail : dpscificsolutions066@gmail.com
visit us: www.dpscificsolutions.in
contact us: 85276-76998, 79882-53107

IMPORTED NURSE TRAINING MODELS

49

GD/LV18

SURGICAL SUTURING AND BANDAGING SIMULATOR

The Simulator provides commonly used surgical incisions, which simulate all kind of female thoracic and abdominal incisions, tube drains and amputation stump. Students can practice wounds treatments of washing, disinfecting, changing dressing, bandaging etc. The skin is dry, soft, and flexible, allowing the bandages to adhere better.

Features:-

- Thyroidectomy
- Mid-sternal split- with two chest tube drains
- Right mastectomy- with simulated drain
- Right cholecystectomy- with simulated T-tube
- Laparotomy
- Appendectomy
- Left colostomy
- Right ileostomy
- Abdominal Hysterectomy (Transverse incision)
- Left nephrectomy (thoraco- abdominal incision)
- Right nephrectomy (oblique incision)
- Laminectomy
- Sacral decubitus ulcer- stage 2
- Right thigh amputation stump



GD/LV18

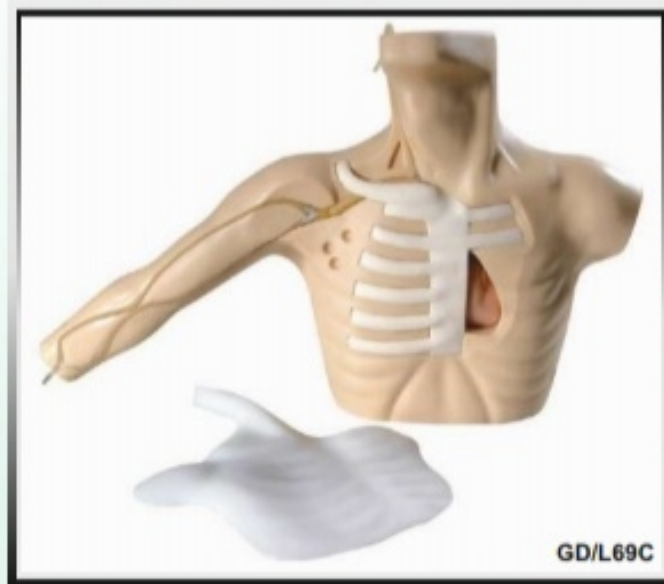
GD/L69C

PICC LINE (PERIPHERALLY INSERTED CENTRAL CATHETER)

The model is suitable for central venipuncture of internal carotid vein and subclavical vein and peripheric venipuncture (arm veins) of cerhalic vein. The cervical veins and arm veins can be filled with simulative blood

Features:

- The model is a simulative right half of adult torso with right arm. There are apparent anatomical marks: clavicle suprasternal notch, sternocleidomastoid muscle, pectoralis major muscle, ribs and deltoid muscle
- Lifelike veins: Superior vena cava, internal jugular vein, subclavical vein, cephalic vein, basilica vein and median cubital vein etc.
- With apparent anatomical marks, the model can be used to train puncture and catheterization of internal carotid vein, subclavical vein, cerphalic vein and heart catheterization.
- The skin and veins can be replaced; Students will feel an apparent "POP" when puncture needle has been thrust into the veins
- The heart floating swan-ganz intubation can be exercised.



GD/L69C

GD/HS10B

ADVANCED BUTTOCKS INTRAMUSCULAR INJECTION SIMULATOR

Features:

The transparent left side of the model shows internal structure including bones, muscles, nerves and veins, facilitating to compare left side with right side and avoiding damaging the nerves and veins. Correct intramuscular injection sites can be palpated. A buzzer and two color flashing lights will warn students if the needle position is incorrect.



GD/HS10B

IMPORTED ANATOMICAL MODELS

50

GD/A18101

NERVOUS SYSTEM

- Mounted on board.
- Shows 33 Position
- Show the structure of central nerves, peripheral nerves, including spinal nerves radiated from central system to other parts of body (such as ulnar nerves, radial nerves of branchial plexus, median nerve, ischiadic nerves).
- Made of Advanced PVC.



GD/A18101

GD/A18110

SYMPATHETIC NERVOUS SYSTEM

- Mounted on board.
- Shows 53 Position
- Shows the outlook of Automatic Nervous System, including Sympathetic.
- Made of Advanced PVC.



GD/A16001



GD/A18102

GD/A18102

SPINAL CORD IN THE SPINAL CANAL

- Mounted on board.
- Shows 47 Position
- Shows Ventral side, Brain Stem and Spinal Cord.
- Branches up to the coccygeal plexus, Sympathetic trunk with its connection to the Central Nervous System.
- Made of Advanced PVC.



GD/A18110

GD/A16001

CIRCULATORY SYSTEM

- Mounted on board.
- Shows 81 Position
- Shows general network of vessels in human body.
- Made of Advanced PVC.



XC-350

GD/A12001

DIGESTIVE SYSTEM

- Mounted on board
- Shows alimentary canal from mouth to rectum in median section and included buccal cavity, pharynx, esophagus with half of the stomach, the opened duodenum, small and large intestine, the opened appendix, the unfolded return, the transverse colon, liver and pancreas.
- Shows 49 positions.
- Made of advanced PVC.

GD/A16011

LYMPHATIC SYSTEM

- Mounted on board.
- Shows 63 Position
- Shows the component and structure of the Lymphatic System.
- Made of Advanced PVC.



GD/A16011



D.P. SCIENTIFIC SOLUTIONS

704, A-BLOCK, NEW TAGORE GARDEN
AMBALA CANTT - 133001 (H.R.) INDIA
E-mail : dpscientificsolutions066@gmail.com
visit us: www.dpscientificsolutions.in
contact us: 85276-76998, 79882-53107

SPINE BOARDS/ DNA, RNA MODELS/ TRACHEOTOMY MODELS

51

YXH-1A6E New

SPINE BOARD (full size)

Spine Board mainly used for safety transporting seriously injured and immobilizing patients. Its structure is allowed X-rays because of its completely translucent. It is compatible with most head immobile devices and strap mechanisms. It also can be used as a floatable device. Packed in high normal brown carton.

Technical Specifications: -

Product size (LxWxH): 184x45x5.5cm

N.W. – 7.4 kg.

Load Bearing : 155 kg.



New

IMPORTED MODELS/MANIKIN/SIMULATORS ON TRACHEOTOMY, TUBE FEEDING, GASTROSTOMY, IV INJECTION, NEW BORN RESUSCITATION MODELS ETC.

TRACHEOTOMY

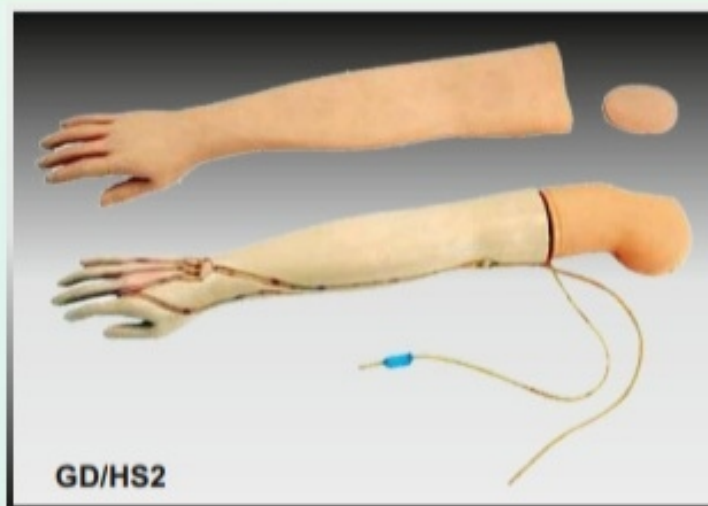
GD/H23 ADULT TRACHEOTOMY CARE SIMULATOR

Features

1. Tracheotomy Care
2. Precise Anatomy, Pharynx, Epiglottis, Trachea, Esophagus, Position of Tracheotomy, Cricoids and left, right bronchial trees
3. Sputum suction
4. Suction via oral cavity
5. Clean and Care of tracheal cannula



GD/H23



GD/HS2

GD/HS2

MULTI-FUNCTIONAL ADULT IV TRAINING ARM MODEL

(LIFE LIKE MULTI VENOUS TRAINING MANIKIN FOR DRUG ADMINISTRATION)

This adult vein puncture and Injection Training Arm has all the 8 veins of the vascular system of the arm, it helps to provide a good training of injection, infusion and phlebotomization. This model can provide a real life like feel when the students practice on this model.

IMPORTED STOMATOLOGY / DENTAL TRAINING MODELS

52



GD/B10012

GD/B10012

TRANSPARENT MILK TEETH DEVELOPMENT MODEL

The model includes maxillary dentition and mandibular dentition and displays the structure of milk maxillary teeth, milk mandibular teeth; total of 14 indication signs. 6X6X6cms



GD/B10038

GD/B10038

FIXED ORTHODONTIC MODEL (DISLOCATION)

Shows the correction effect for dental crowding



XC - 305

XC-305

EXPANSION MODEL OF HUMAN TEETH

This model shows the morphological differences of the incisor, canine and molar teeth. Dissections of the canine and molar teeth demonstrate the structure of enamel, dental pulp cavity. Enlarged 12 times, 3pcs set.

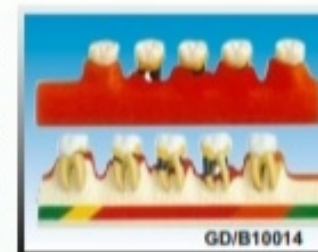


TH-002

TH-002

DENTAL MODEL SMALL

- Model with Plastic Hinge



GD/B10014

GD/B10014

PERIODONTAL DISEASE MODEL

The model includes 5 parts and displays the structure of normal mandibular molar and periodontal disease development process: a total of 15 indications signs. 4x16x3 cms.



TH-002

TH-002

DENTAL MODEL SMALL

- Model with Plastic Hinge



GD/B10035

GD/B10035

ORTHODONTIC MODEL

Shows the abnormal structure of crowded teeth, anti-jaw, protrusion, jaw opening, etc



XC-403/TH-001

XC-403/TH-001

TOOTH HYGIENE SET- CONSISTS OF TEETH, TONGUE AND PALATE WITH BRUSH

This model is to serve for demonstration in mouth protection and relative clinical teaching. Consists of gum, teeth, tongue and palate. It demonstrates teeth form and oral cavity cleaning and protection.



GD/B10004

GD/B10036

FIXED ORTHODONTIC MODEL (NORMAL)

Shows the effect after correction transparent ceramic brackets



GD/B10036



GD/B10037

GD/B10037

FIXED ORTHODONTIC MODEL (NORMAL)

Shows the effect after correction

ITEM NO: GD/B10004

TEETH MODEL

GD/B10004/1 Lower Incisor 17.5cmx4.5cmx4.5cm

GD/B10004/2 Lower Canine 22cmx6.5cmx6cm

GD/B10004/3 Lower Molar with one root 18cmx5.5cmx7cm

GD/B10004/4 Lower Incisor with Two roots 16cmx8cmx8.5cm

GD/B10004/5 Lower First Upper Molar with Three roots 16cmx8cmx11cm

THESE SPINE BOARD ARE A MUST FOR EVERY NURSING / MEDICAL COLLEGE

THESE MODELS ARE MADE OF ADVANCED PVC PAINTED IN ORIGINAL COLOURS BY COMPUTER



D.P. SCIENTIFIC SOLUTIONS

704, A-BLOCK, NEW TAGORE GARDEN
AMBALA CANTT - 133001 (H.R.) INDIA
E-mail : dpscientificsolutions066@gmail.com
visit us: www.dpscientificsolutions.in
contact us: 85276-76998, 79882-53107

IMPORTED STOMATOLOGY / DENTAL TRAINING MODELS

53



GD/B10001
SET OF TEETH OF AN ADULT
The Model Consists of 32 Teeth made of advanced PVC. Size 10x8x7cms



GD/B10016
PATHOLOGIC TOOTH WITH JAW
Consists of 2 parts, the upper jaw and the lower jaw. Shows the pathologic structure of decayed tooth, pulpitis, apical putrescence, paradentitis and apical abscess. 20 positions are displayed. Size 18x16x6cms

GD/B10002
LOWER JAW OF 12-YEARS-OLD

The Model Shows the Shape and Conformation of the sets of permanent teeth of child (11-14 years old), as well as the structure of the decayed teeth. 21 positions are displayed. size 17x29x6cms



GD/B10008
DISSECTED MODEL OF DENTAL DISEASE

Displays dental caries destruction, alloy material filling repair, Suppurative pulpitis, pulp necrosis, root abscess, periapical abscess, periodontitis, alveolar Suppurative, etc; There are 7 parts of indication signs. 6x11x4cms.



GD/B10003
LOWER JAW OF 18-YEARS-OLD
The model shows the left half of the lower jaw. The Canine and first molar can be taken out and are detachable. Size 17x29x6 cms

GD/B10005/2
DENTAL CARIES MODEL
The model shows dental caries in initial and advanced stages. 16 positions are displayed. size 39x39x26 cms



GD/B10010
TRANSPARENT ADULT TEETH MODEL
The model includes maxillary dentition and mandibular dentition, and displays the appearance and structure of maxillary teeth and mandibular teeth; a total of 16 parts of indication signs. 6x8x6 cms.



GD/B10006
DEVELOPMENT OF A SET OF TEETH
The model shows the development from temporary teeth to the germination of the permanent teeth, demonstrating the teeth at the ages of less than 6 months, 2 years, 5 to 7 years, 17 to 26 years. Each model shows the upper and lower jaws of right side. They demonstrate the procedures of the germination of temporary teeth, replacement of the teeth, the germination of the permanent teeth, as well as the development of the upper and lower jaws and maxillary sinus. 18 positions are displayed. Life Size

GD/B10011
TRANSPARENT DENTAL PATHOLOGY MODEL

The model includes maxillary dentition and mandibular dentition and displays the structure of adult maxillary teeth, adult mandibular teeth, dental caries, pulpitis, gingival fistula and silver amalgam filling repair, etc; a total of 16 indication signs. 6x8x7 cms



FOR PRICES OF ALL THE MODELS, PLEASE SEE ENCLOSURE OR ASK FOR THE PRICE LIST

54

COMMUNITY HEALTH NURSING MODELS

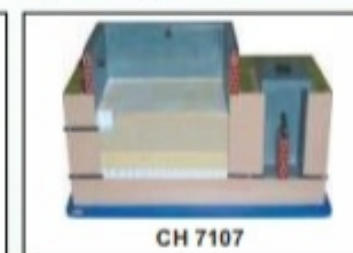
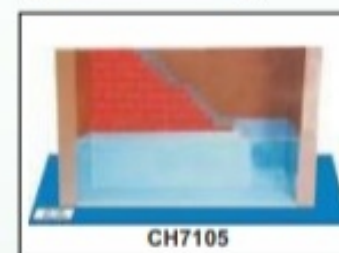
- Made of high grade materials having long durability
- Mounted on sturdy wooden frame for easy display
- Supplied with well illustrated informative literature

- Well labeled parts
- Beautifully painted in bright colors
- Model is a great teaching tool for nursing students

COMMUNITY HYGIENE

- CH 7101- Sanitary Well.....Price
CH 7102- Insanitary Well.....Price
CH 7103- Deep and Shallow Well.....Price
CH 7104- Deep Tube Well.....Price

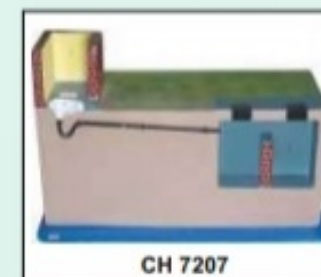
- CH 7105- Step Well.....Price
CH 7106- Berkefeld Filter.....Price
CH 7107- Slow Sand Filter.....Price
CH 7108- Rapid Sand Filter.....Price



ENVIRONMENTAL SANITATION

- CH 7201- House Drainage System.....Price
CH 7202- Chamber Type Incinerator.....Price
CH 7203- Activated Sludge Process.....Price
CH 7204- Bore Hole Latrine.....Price
CH 7205- Dug Well Latrine (Pit Latrine).....Price

- CH 7206- Trench Latrine.....Price
CH 7207- Septic Tank Latrine.....Price
CH 7208- Biogas Plant.....Price
CH 7209- Smokeless Chulha.....Price



ALL THESE MODELS ARE DURABLE & UNBREAKABLE & ARE INDIAN MADE



D.P. SCIENTIFIC SOLUTIONS

704, A-BLOCK, NEW TAGORE GARDEN
AMBALA CANTT - 133001(H.R.) INDIA
E-mail : dpscientificsolutions066@gmail.com
visit us: www.dpscientificsolutions.in
contact us: 85276-76998, 79882-53107

IMPORTED ANATOMICAL MODELS

55

XC-134 **New** **CUTAWAY OSTEOPOROSIS**

Consist of 3 medially divided lumbar vertebrae with intervertebral discs. For comparison, the upper section shows healthy bone structure. The middle section shows osteoporosis bone structure and the lower section shows advanced osteoporotic bone structure with flattened plates, deformation and decreased mass.

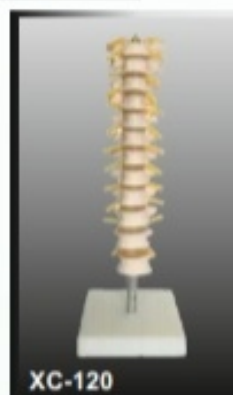


XC-135 **New** **SKULL WITH CERVICAL SPINE**

Life size model of human skull on cervical spine in four parts. Skull is dissectible into 3 parts with moveable jaw, cut calvarium. Cervical spine is shown with seven cervical vertebrae, cervical nerves, vertebral arteries, basilar artery and rear cerebral arteries.

XC-120 **New** **THORACIC SPINAL COLUMN**

This model consists of the 12 thoracic vertebrae with intervertebral discs, thoracic nerves and spinal cord on stand.



XC-326 **NORMAL, FLAT & ARCHED FOOT**

This model shows the anatomical structure and the distal end of tibia of Normal, Flat & Arched Foot. Set of 3 model.

XC-105C **DIDACTIC VERTEBRAL COLUMN WITH PELVIS**

This model is upgraded from XC-105, and features different sections of the spinal column in different color: cervical vertebrae, thoracic vertebrae, lumbar vertebrae, sacrum and the coccyx.



XC-325 **PALM ANATOMY**

These life size models show the superficial and internal structures of the palm. Set of 4 model.



DISPLAY & STORAGE STAND FOR MAPS & CHARTS (INDIAN MADE)

- BN01** **MAP STORAGE STAND** All iron pipe side hook type for 36 maps
- BN02** --do-- but for 24 maps
- BN03** **MAP DISPLAY STAND** all iron single pipe height adjustable

SPECIAL DISPLAY SYSTEMS AND STANDS (INDIAN MADE)

- BN04** **EXHIBITION DISPLAY SYSTEM** - Three panels of 4'x3' each one side pin board and the other side green board for chalk writing or white board for marker writing mounted on 4 pedestal stainless steel stands with heavy base
- BN05** **MOBILE BOARD** - It can be used on both the sides with White, Green, Black or display boards 4'x3' mounted on stand made of rectangular pipes with wheels/base
- BN06** **NEWS PAPER AND MAGAZINE STAND** - Sleek stand made of stainless steel



THE SPINE BOARD ARE A MUST FOR EVERY NURSING / MEDICAL COLLEGE

COMMUNITY HEALTH BAGS/MIDWIFERY KIT FOR HOME DELIVERY (INDIAN MADE)

56

CB-01 COMMUNITY HEALTH BAG AS PER N.C. SPECIFICATIONS

Contains the following items in Bag (Total 38 items)

- | | | |
|--------------------------|---------------------------------------|--|
| 1. Mucus Sucker | 14. Cotton | 27. Bandage |
| 2. Face Mask | 15. Big Scissor | 28. Towel |
| 3. Sprit Lamp | 16. Small Scissor | 29. Writing pad |
| 4. Surgical Sprit | 17. Cord Clamp | 30. Pen |
| 5. Gloves | 18. Steripad | 31. Leukoplast |
| 6. Test Tube Holder | 19. Fetoscope | 32. Non Toothed forcep |
| 7. Test Tube | 20. Stethoscope | 33. Rectal Thermometer |
| 8. Dettol | 21. Apron | 34. Straight Artery Forcep |
| 9. Kidney Trays | 22. B.P. Handle | 35. Curve can |
| 10. Ounces Glass | 23. Surgical Blades | 36. Tubing for curve can |
| 11. Syringe | 24. Cl. Thermometer | 37. Empty Plastic bottle for cotton swap |
| 12. Enema Can | 25. Empty Plastic bottle for solution | 38. High quality Bag with pockets & carrying strap |
| 13. Tubing for Enema can | 26. Toothed Forcep | |



CB-02 COMMUNITY HEALTH BAG

Contains the following items in Bag (Total 20 items)

- | | |
|-----------------------------------|-----------------------------------|
| 1. Spirit Lamp | 11. Forcep Non Toothed 5" |
| 2. Test Tube Holder | 12. Artery Forcep (straight) 6.5" |
| 3. Test Tube 5" | 13. Clinical Thermometer |
| 4. Kidney Tray 6" stainless steel | 14. Spring Balance |
| 5. Syringe 5ml | 15. Towel |
| 6. Stethoscope | 16. Measuring Tape |
| 7. Fetoscope | 17. Soap Dish |
| 8. Suture Cutting Scissor | 18. Nail Brush |
| 9. Dressing Scissor 6" | 19. Dropper |
| 10. Forcep Toothed 6" | 20. Small Bowl |



CB-03 MIDWIFERY KIT FOR HOME DELIVERY

Contains the following items in Bag (Total 29 items)

- | | |
|---|--------------------------------------|
| 1. Face Mask | 15. Artery Forcep Straight 6" |
| 2. Surgical Sprit | 16. Artery Forcep Curve 6.5" |
| 3. Gloves | 17. Thumb Forcep - Plain 5" |
| 4. Rubber Mucus Sucker | 18. Thumb Forcep - Toothed 6" |
| 5. Kidney Trays Medium 6" Stainless steel | 19. Umbilical Cord Cutting Scissor |
| 6. Kidney Trays Small | 20. Umbilical Cord Tie |
| 7. Bowls Medium | 21. Enema Can |
| 8. Bowls Small | 22. Tubing / Douch Set for Enema can |
| 9. Syringe 10ml | 23. Cotton |
| 10. Syringe 5ml | 24. Mackintosh |
| 11. Syringe 2ml | 25. Rubber Catheter |
| 12. Hypodermic Needle Pkt. | 26. Spring Balance |
| 13. Apron | 27. Soap Dish |
| 14. Fetoscope | 28. Towel |
| | 29. Measuring Tape |



THE ABOVE SPECIFICATIONS /COLOUR /PATTERN OF THE BAG ARE SUBJECT TO CHANGE WITHOUT NOTICE



D.P. SCIENTIFIC SOLUTIONS

704, A-BLOCK, NEW TAGORE GARDEN
AMBALA CANTT - 133001(H.R.) INDIA
E-mail : dpscificsolutions066@gmail.com
visit us: www.dpscificsolutions.in
contact us: 85276-76998, 79882-53107

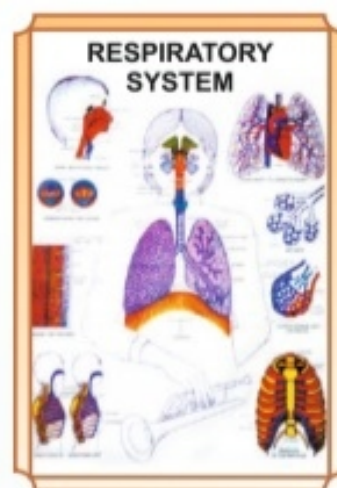
POLYART PLASTIC HUMAN ANATOMY CHARTS

SIZE 100 x 75 CMS FITTED WITH PLASTIC ROLLERS

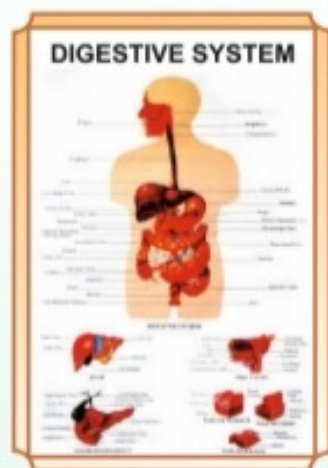
57

- HAB - 01 Skeletal System
- HAB - 02 Muscular System
- HAB - 03 Circulatory System
- HAB - 04 Nervous System
- HAB - 05 Digestive System
- HAB - 06 Teeth and Skin
- HAB - 07 Human Eye, Ear and Head
- HAB - 08 Lymphatic System
- HAB - 09 Respiratory System
- HAB - 10 Endocrine System
- HAB - 11 Nutrition
- HAB - 12 Immune System
- HAB - 13 Human Nose
- HAB - 14 Human Heart
- HAB - 15 Excretory System
- HAB - 16 The Eye
- HAB - 17 The Ear
- HAB - 18 The Kidney
- HAB - 19 Human Lungs
- HAB - 20 Human Liver
- HAB - 21 Human Brain
- HAB - 22 Skin & Sensation
- HAB - 23 Nervous System & Sensory Organs
- HAB - 24 Metabolism
- HAB - 25 Skull & Joints
- HAB - 26 Human Eye & Ear
- HAB - 27 Spinal Chord
- HAB - 28 Abdominal Cavity
- HAB - 29 Human Eye - Psychological Diseases of Eye
- HAB - 30 Understanding Viral Infection
- HAB - 31 Human Tongue
- HAB - 32 Human Endocrine Glands
- HAB - 33 Human Larynx
- HAB - 34 Human Trachea
- HAB - 35 Human Alveolus
- HAB - 36 Human Reflection Arch
- HAB - 37 Human Eye Muscles
- HAB - 38 Human Eye Tear Glands
- HAB - 39 Posterior Abdominal
- HAB - 40 Human Urinary Bladder
- HAB - 41 Human Blood Group
- HAB - 42 Cardiovascular Diseases
- HAB - 43 Classification of Organism: Five Kingdoms
- HBA - 44 Human Gaseous Exchange System
- HAB - 45 Human Blood : Composition and Functions
- HAB - 46 Liver Cirrhosis
- HAB - 47 Locomotory System
- HAB - 48 Lung Cancer : Causes, Symptoms and Preventions

Anatomically
Perfect

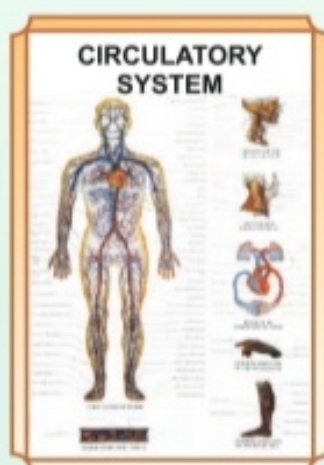


Excellent
easy viewing by
large or small
groups



Happy, healthy
figures shown in
familiar situations

User-friendly
illustrations and
colours



Each Chart ₹ 390.00
Set of 48 Charts ₹ 18750.00

THESE CHARTS ARE PRINTED ON WATER PROOF, MARKABLE AND WASHABLE POLYART SHEET WITH ROLLERS

POLYART PLASTIC HUMAN REPRODUCTION CHARTS

Size 75 x 100 cms. Fitted with Plastic Rollers

58

POLYART PLASTIC HUMAN REPRODUCTION CHARTS

- HAR 01 Human Reproductive Organs Male
- HAR 02 Human Reproductive Organs Female
- HAR 03 Human Embryological Development
- HAR 04 Human Life Cycle (Birth)
- HAR 05 The Menstrual Cycle
- HAR 06 Placenta
- HAR 07 Human Uterus & Fallopian Tube
- HAR 08 Human Penis & Scrotum

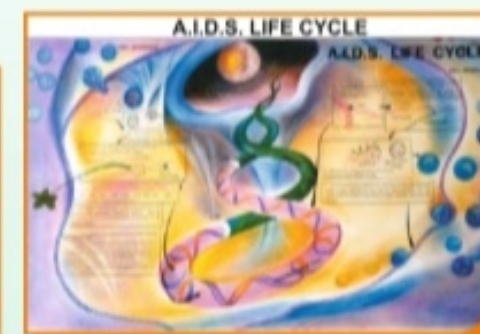
Each Chart ₹ 390.00
Set of 8 Charts ₹ 3100.00



POLYART PLASTIC AIDS CHARTS (SET OF 6)

Size 75 x 100 cms. Fitted with Plastic Rollers

POLYART PLASTIC CHART (SETS OF 6)



- HAD 01 Transmission of Virus that Causes AIDS.
- HAD 02 Sexually Transmitted Diseases (S.T.D.)
- HAD 03 AIDS Symptoms and Preventions
- HAD 04 Non-contagious Nature of AIDS.
- HAD 05 Life Cycle of AIDS.
- HAD 06 Immune System.

Each Chart ₹ 390.00
Set of 6 Charts ₹ 2350.00

THESE CHARTS ARE PRINTED ON WATER PROOF, MARKABLE AND WASHABLE POLYART SHEET WITH ROLLERS



D.P. SCIENTIFIC SOLUTIONS

704, A-BLOCK, NEW TAGORE GARDEN
AMBALA CANTT - 133001 (H.R.) INDIA
E-mail : dpscientificsolutions066@gmail.com
visit us: www.dpscientificsolutions.in
contact us: 85276-76998, 79882-53107

HUMAN ANATOMY (SET OF 11) 3D RAISED RELIEF PLASTIC SCIENTIFIC MODELS

59

HUMAN ANATOMY (Set of 11 Models)

HBD 01 50x70 cms complete
with hard backing aluminium
angle frame and hanging hooks
Each Pc. ₹ 1550.00

(Set of 11) Includes the following Topics :-

- HD 33 SKELETON
- HD 34 CIRCULATORY SYSTEM
- HD 35 HEART
- HD 36 NERVOUS SYSTEM
- HD 37 SECTION OF BRAIN
- HD 38 MUSCLES
- HD 39 DIGESTIVE SYSTEM
- HD 40 RESPIRATORY SYSTEM
- HD 41 THE EAR
- HD 42 THE EYE
- HD 43 HUMAN KIDNEYS

HUMAN REPRODUCTIVE ORGANS (Set of 8 Models)

HDA 02 50x70 cms complete
with hard backing aluminium
angle frame and hanging hooks
Each Pc. ₹ 1550.00



3D CHARTS ARE ANATOMICALLY REALSTIC TO VIEW

FIRST AID, HEALTH, DISEASES, FAMILY PLANNING MOTHER CRAFT, NEW FOOD CHARTS

60

PICTORIAL FIRST AID CHARTS

LAMINATED FITTED WITH ROLLERS SIZE 50 X 75 CMS each ₹ 90.00
LAMINATED WITH HARD BACKING & ALUMINIUM FRAME each ₹ 850.00

- | | |
|---|------------------------------|
| 01 Roller Bandages | 09 Hemorrhage |
| 02 Artificial Respiration | 10 Fractures |
| 03 Unconsciousness | 11 Transport of the Injured |
| 04 Emergency Resuscitation | 12 Bandaging |
| 05 Skeleton & Circulatory System | 13 Poisons & Their Antidotes |
| 06 Burns and Scalds | 14 Snakes & Snake Bites |
| 07 Electric Shock and Its Management | 15 Skeleton System |
| 08 Removal of Foreign Bodies from Eye, Ear and Nose | |



COMMON DISEASES AND THEIR PREVENTION CHARTS

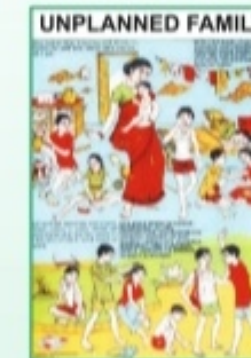
LAMINATED FITTED WITH ROLLERS SIZE 50 X 75 CMS each ₹ 90.00
LAMINATED WITH HARD BACKING & ALUMINIUM FRAME each ₹ 850.00

- | | | |
|--------------------------------|--|------------------------|
| 01 Malaria | 09 Cholera | 17 Leprosy |
| 02 Plague | 10 Tuberculosis | 18 Jaundice |
| 03 Typhoid | 11 Influenza | 19 Dysentery |
| 04 Cancer | 12 Viral Diseases | 20 Diabetes |
| 05 AIDS | 13 Heart Attack | 21 Chicken Pox |
| 06 Asthma | 14 Thyroid | 22 Hypertension (B.P.) |
| 07 Hepatitis | 15 Arthritis | 23 Dengu |
| 08 Protein Energy Malnutrition | 16 Immunization Chart for the New Born | |



FAMILY PLANNING CHARTS

- 01 Unplanned Family
- 02 Small Family - Happy Family (Planned Family)
- 03 Tempromay methods of family planning
- 04 Space your Child Birth



HEALTH & HYGIENE CHARTS

- 01 Causes of Diseases.
- 02 Tobacco & Other Habit Forming Drugs
- 03 Health Rules
- 04 Effects of Alcohol
- 05 Prevention of Diseases



LAMINATED FITTED WITH ROLLERS SIZE 50 X 75 CMS each ₹ 90.00
LAMINATED WITH HARD BACKING & ALUMINIUM FRAME each ₹ 850.00

NEW FOOD CHARTS

These charts contain 110 items with their illustrations, properties and values

- CHART No. 01 PART - I
Milk Products - Fruits - Food Grains.
- CHART No. 02 PART - II
Vegetables - Pulses - Meat
- CHART No. 03 FOOD AND NUTRITION



LAMINATED FITTED WITH ROLLERS SIZE 75 X 100 CMS each ₹ 150.00
LAMINATED WITH HARD BECKING & ALUMINIUM FRAME each ₹ 1650.00

MOTHER CRAFT AND CHILD WELFARE

LAMINATED FITTED WITH ROLLERS SIZE 50 X 75 CMS each ₹ 90.00
LAMINATED WITH HARD BACKING & ALUMINIUM FRAME each ₹ 850.00

- | | |
|--|------------------------------------|
| 01 Welfare of Mother (Diet in Pregnancy) | 05 Baby's Development |
| 02 Preparation for Deleivery | 06 Baby's Weight |
| 03 Ready for Confinement | 07 Baby's Diet |
| 04 Correct & Regular Feeding | 08 Care of Mother during Pregnancy |

THESE CHARTS ARE DOUBLE SIDE LAMINATED WITH ROLLERS



D.P. SCIENTIFIC SOLUTIONS

704, A-BLOCK, NEW TAGORE GARDEN
AMBALA CANTT - 133001(H.R.) INDIA
E-mail : dpscscientificolutions066@gmail.com
visit us: www.dpscscientificolutions.in
contact us: 85276-76998, 79882-53107

PHARMACOLOGY VIDEO CD's

61

| CODE NO. | PARTICULARS | EACH ₹ 1075.00 | SIZE MB |
|----------|--|----------------|---------|
| CDP001 | SYMPATHOMIMETIC PHARMACOLOGY | | 30 MB |
| CDP002 | SKULL PART 1 FORAMINA & STRUCTURES | | 80MB |
| CDP003 | ROUTE OF DRUG ADMINISTRATION WITH SELECTION PARAMETERS | | 128MB |
| CDP004 | SKULL PART 1 FORAMINA & STRUCTURES | | 30MB |
| CDP005 | PHARMACOLOGY BASIC CONCEPTS | | 35MB |
| CDP006 | DRUG ENDING (PART-1) | | 58MB |
| CDP007 | PHARMACOKINETICS (MADE EASY) | | 17MB |
| CDP008 | CHOLINERGIC DRUGS (AGONISTS & ANTAGONISTS) | | 135MB |
| CDP009 | SYMPATHETIC AND PARASYMPATHETIC | | 114MB |
| CDP010 | GASTRIC ACID PHYSIOLOGY | | 86MB |
| CDP011 | ANTI ANGINAL DRUGS (PART-1) BASIC INTRO | | 59MB |
| CDP012 | AUTONOMIC PHARMACOLOGY LECTURE-1 | | 27MB |
| CDP013 | ALPHA ADRENERGIC BLOCKERS | | 37MB |
| CDP014 | BETA ADRENERGIC BLOCKERS | | 69MB |
| CDP015 | COMPLETE SHORT REVIEW OF PHARMACOLOGY | | 39MB |
| CDP016 | CHATING VIDEO SESSION PHARMACOLOGY | | 176MB |
| CDP017 | CARDIOVASCULAR PHARMACOLOGY | | 78 MB |
| CDP018 | ANTI ARHYTHMIC DRUG | | 33 MB |
| CDP019 | CARDIOVASCULAR PHARMACOLOGY 2 PART | | 78MB |
| CDP020 | ANTIARRHYTHMIC DRUGS PHARMACOLOGY | | 163 MB |
| CDP021 | ANTI ANGINAL DRUGS(PART-1) | | 20MB |
| CDP022 | AUTONOMIC NERVOUS SYSTEM PART -1 | | 260MB |
| CDP023 | ABG INTERPRETATION (BASIC) | | 31MB |
| CDP024 | ANTI ANGINAL DRUGS(PART-1) | | 20MB |
| CDP025 | HOW TO STUDY PHARMACOLOGY | | 21 MB |
| CDP026 | MICROBIOLOGY HELICOBACTER PYLORI | | 48MB |
| CDP027 | NEET PG2020PATTERN PHARMACOLOGY | | 437MB |
| CDP028 | ANITICOAGULANTS & ANTIPLATELET | | 21MB |
| CDP029 | ANITICOAGULANTS & ANTIPLATELET DRUGS | | 136MB |
| CDP030 | PGARMACOLOGY -ANTIEMETICS | | 66MB |
| CDP031 | CARDIAC ARRHYTHMIA | | 99MB |
| CDP032 | PHARMACOLOGY DIURETICS MADE EASY | | 97MB |
| CDP033 | HEART FAILURE SYMPTOMS | | 84MB |
| CDP034 | PGARMACOKINETICS | | 17MB |
| CDP035 | HOW TO STUDYFOR PHARMACOLOGY | | 36MB |
| CDP036 | PGARMACOLOGY MADE EASY DRUG ENDINGS | | 59MB |
| CDP037 | PHARMACOLOGY FUNDAMENTALS | | 151MB |
| CDP038 | PHARMACOLOGY CHAPTER-1 | | 342MB |
| CDP039 | HOW TO STUDY PHARMACOLOGY 2 | | 95MB |
| CDP040 | LEARN COMPLETE PHARMACOLOGY | | 12MB |
| CDP041 | HOW TO REMEMBER DRUG NAMES EASILY | | 30MB |
| CDP042 | GERNAL PHARMACOLOGY PART-01 | | 39MB |
| CDP043 | DUKE PHARMACOLOGY | | 40MB |
| CDP044 | BETA ADRENERGIC BLOCKERS | | 69MB |
| CDP045 | COMPLETE SHORT REVIEW | | 39 MB |
| CDP046 | BASIC INTRODUCTION TO PHARMACOLOGY | | 53MB |
| CDP047 | AUTONOMIC PHARMACOLOGY LECTURE-1 | | 27 MB |
| CDP048 | ANTIEPILEPTIC DRUGS PHARMACOLOGY | | 173MB |
| CDP049 | AUTONOMIC NERVOUS SYSTEM PART -1 | | 260MB |
| CDP050 | INTRODUCTION TO AUTONOMIC NERVOUS | | 24 MB |
| CDP051 | RAAS INHIBITORE CONCEPT | | 303MB |
| CDP052 | ROUTE IF DRUG ADMINISTRATION | | 128 MB |
| CDP053 | PHARMACOLOGY THE BASICS VEDEO-1 | | 244MB |
| CDP054 | PHARMACOKINETICS | | 265MB |
| CDP055 | EXCRETION & HALF LIFE | | 277MB |
| CDP056 | PRACTICE QUESTION | | 194MB |
| CDP057 | PHARMACODYNAMICS | | 248MB |
| CDP058 | AUTONOMIC SYSTEM | | 260MB |
| CDP059 | FIRST AID PHARMACOLOGY | | 136 MB |
| CDP060 | ANTI ANGIANL DRUG | | 20 MB |
| CDP061 | ROUTE OF DRUG ADMINISTRATION | | 128 MB |
| CDP062 | LEARN COMPLETE PHARMACOLOGY | | 20 MB |
| CDP063 | ROUTE OF DRUG ADMINISTRATION WITH SELECTION PARAMETERS | | 128 MB |
| CDP064 | PHARMACOKINETICS (MADE EASY) | | 58 MB |
| CDP065 | FIRST AID PHARMACOLOGY | | 136 MB |
| CDP066 | SKULL PART-1 FORAMINA | | 80 MB |



VISUAL TEACHING AIDS

62

OVERHEAD PROJECTOR (Single Bulb)

Specification

- Low Voltage
- Latest Design
- Single Halogen Lamp 24V-250W
- Rack & Pinion Focusing System
- Light Weight.
- Metal Body
- Motorised cooling System
- Intensity Control



OVERHEAD PROJECTOR (Double Bulb)

Specification

- Twin Lamp 24V-250W (Specification same as above but equipped with dual bulb system)

SLIDE PROJECTOR MANUAL MODEL

Specification

- Versatile design
- Noiseless cooling system
- Rigid construction
- Manual Focusing
- Halogen Lamp 24V-150W
- Slide carrier for 2 slides
- Height adjustable
- Slide carrier for 2 slides



ADDITIONAL ACCESSORIES

- Projection Screen 70"x52" (175x130 cms) with folding tripod stand. Superior quality
- Map Screen made of thick white rexine with wooden roller 175x135cms.
- Overhead Projector marker set of 7 pens including Eraser Pen Per Set
- Bulb for OHP 24v-250W
- Bulb for Slide Projector 24v-150W
- Blank Overhead Projector Transparencies - 210x297 mm Packet of 100 Sheets Per Pkt

LASER POINTER

- Laser Pointer Pen Type with AAA size batteries.
- Laser Pointer Pen with button cells

OVERHEAD PROJECTOR TRANSPARENCIES

₹ 40.00 per transparency

- OHP01 Human Physiology (Set of 50)
- OHP02 Sense organs (Set of 20)
- OHP03 First Aid (Set of 50)



LCD PROJECTOR (IMPORTED)

This is the Best value projector ideal for class room, workshop. This can be directly attached to the computer and makes your presentation more exciting with high brightness, high contrast and colors. This can be fit to the ceiling, front or rear positions. The cost of accessories for ceiling fitting is extra. This has computer compatibility with Mac PC or Windows PC. The maximum Resolution is 1920x1200 and Contrast ratio is 20000:1. The Digital zoom is 2x and colour support is 30-bit. The minimum focal length is 21.79mm and the maximum focal length 23.99mm. The minimum Projector distance is 1 Mts. and the Maximum Projector distance is 11.90 Mts



THE ACTUAL PROJECTOR MAY DIFFER IN SHAPE FROM THE PICTURE SHOWN DUE TO CONSTANT IMPROVEMENT



D.P. SCIENTIFIC SOLUTIONS

704, A-BLOCK, NEW TAGORE GARDEN
AMBALA CANTT - 133001(H.R.) INDIA
E-mail : dpscientificsolutions066@gmail.com
visit us: www.dpscientificsolutions.in
contact us: 85276-76998, 79882-53107

5cmXcm MULTI COLOURED 35mm SLIDES

63

NURSING SLIDE SET (ON FUJI FILM)

| | |
|--|------------|
| BNS01 Basic Nursing Skills | Set of 40 |
| BNS02 Burns & Nursing | Set of 40 |
| BNS03 Fundamentals of Nursing | Set of 60 |
| BNS04 History of Nursing | Set of 20 |
| BNS05 Infant Nursing | Set of 40 |
| BNS06 Medical Surgical Nursing | Set of 20 |
| BNS07 Maternity Nursing | Set of 20 |
| BNS08 Nursing Responsibilities & Implications | Set of 100 |
| BNS09 Oncologic Nursing | Set of 40 |
| BNS10 Pediatric Nursing | Set of 40 |
| BNS11 Emergency Delivery | Set of 20 |

₹ 15.00 per slide



HEALTH SECTION SLIDE SET (ON FUJI FILM)

PREVENT THE DISEASES

| | |
|--------|----------------|
| PDS 01 | Cholera |
| PDS 02 | Malaria |
| PDS 03 | Aids |
| PDS 04 | Plague |
| PDS 05 | Tuberculosis |
| PDS 06 | Leprosy |
| PDS 07 | Influenza |
| PDS 08 | Jaundice |
| PDS 09 | Cancer |
| PDS 10 | Typhoid |
| PDS 11 | Viral Diseases |
| PDS 12 | Chicken Pox |
| PDS 13 | Dysentery |
| PDS 14 | Hepatitis |
| PDS 15 | Heart Attack |
| PDS 16 | Diabetes |
| PDS 17 | Asthma |
| PDS 18 | Arthritis |

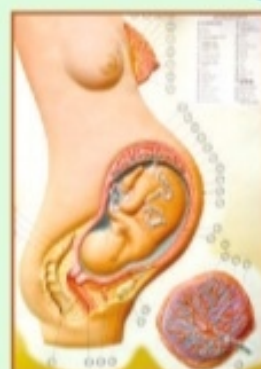
HEALTH CARE each set contain 20 slides

| | |
|---------------|-------------------------------|
| HCS01 | Health Rules |
| HCS02 | Causes of Diseases |
| HCS03 | Prevention of Diseases |
| HCS04 | Effects of Alcohol |
| HCS05 | Tobacco & Habit Forming Drugs |
| HCS06 | Clean Body |
| HCS07 | Clean Water |
| HCS08 | Constituents of Food |
| HCS09 | Malnutrition |
| HCS10 | Immunization |
| OTHERS | |
| HCS01 | Human Physiology set of 50 |
| HCS03 | Yogasan set of 20 |
| HCS04 | Vitamin set of 10 |
| HCS06 | Human Body set of 10 |
| HCS07 | First Aid set of 50 |
| HCS09 | Mothercraft set of 30 |
| HCS11 | Child Welfare set of 20 |
| HCS12 | Family planning set of 100 |

₹ 12.00 per slide



3D RAISED RELIEF PLASTIC SCIENTIFIC MODELS MADE IN ITALY



HUMAN REPRODUCTION MALE & FEMALE MODELS (SET OF 8)

RC01Y Size: 25x35cms (Supplied in sets only)

Each Set of 8 ₹ 2250.00 per set

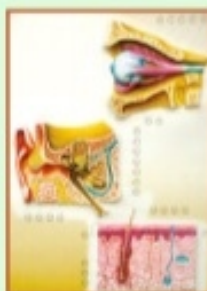
- RC001** Male & Female Reproductive Organs
- RC002** (M) Genital Organs
- RC003** (F) Genital Organs
- RC004** How Semen is Formed
- RC005** Fertilization
- RC006** First Week of Egg Development
- RC007** Eight Month old Foetus
- RC008** Various Stages of Embryonic Development

HUMAN ANATOMY/PHYSIOLOGY MODEL (SET OF 8)

RC01X Size: 25x35cms (Supplied in sets only)

Each Set of 8 ₹ 2250.00 per set

- RK056** Skeleton
- RK057** Muscles
- RK058** Brain & Nervous System
- RK059** Organs of Taste
- RK060** Circulation of Blood
- RK061** Digestive System
- RK062** Respiratory System
- RK063** Eye, Ear & Skin



3D CHARTS ARE ANATOMICALLY REALSTIC TO VIEW

IMPORTED NURSE TRAINING MODELS

64

GD/F3A New

PERINEUM CUTTING AND SUTURING TRAINING MODEL

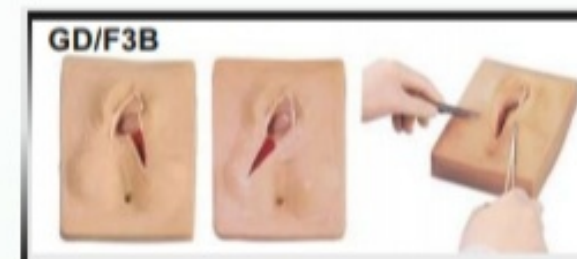
This model is designed for practice of perineum cutting and suturing. The main structure of the simulator is a perineum, which is made of simulative foam, and the inner muscle is soft PVC. The simulator is mounted on a plastic framework. There are two handles in the back and bottom of the simulator to adjust tension of the perineum. Right posterior incision, left posterior incision or median incision can be selected to exercise perineum cutting and suturing. Size: 36x34x26cm G.W. : 2 kg.



GD/F3B

VULVA SUTURING TRAINING SIMULATOR

- This model demonstrates the different position in pudendum.
- It's made of soft materials, can be used in many times suturing training.



IMPORTED DNA / RNA MODELS



XD-335 DNA ACTIVITY MODEL

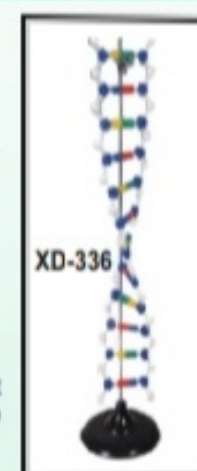
Size (cm): 12x12x46

Students construct two complete DNA segments with this set. The components consist of four nucleic acid bases: cytosine, adenine, guanine and thymine, that are designed so only the proper bases fit together. Includes 48 bases, four strands, two supporting rods with penestals an illustrated instructions.

XD-336

DNA STRUCTURE SIMULATION KIT

Includes 6 kinds of pieces representing the different parts of DNA structure. An excellent kit for one or two student to build a double helix of DNA, and to learn replication of DNA. The amounts of pieces are enough to build a helix. With case



GD/FT5 NEWBORN BABY DOLLS (Set of 4) New

- GD/FT1** Term fetus
Size: 52.5x27x15.5cm
G.W. : 2.7kg
- GD/FT2** Newborn baby with visible umbilical cord
Size: 52.5x27x15.5cm
G.W. : 2.5kg
- GD/FT3** Newborn baby without umbilical cord
G.W. : 1.5kg
- GD/FT4** One-month baby
Size: 52.5x27x15.5cm
G.W. 1.5kg



THE ACTUAL PHOTOGRAPH MAY DIFFER FROM THE PICTURE SHOWN DUE TO CONSTANT IMPROVEMENT